

HOLY SPIRIT  
UNIVERSITY  
OF KASLIK

# FACT BOOK

## 2013-2014

QUALITY ASSURANCE AND  
INSTITUTIONAL EFFECTIVENESS OFFICE



## Preface

Dear Friends and Colleagues,

It's with pleasure that I present to you the Holy Spirit University of Kaslik Fact Book 2013-2014.

This report is being published for the first time for the academic year 2013-2014 and it will be published yearly to highlight the progress and improvement of different areas in the University. The USEK Fact Book 2013-2014 includes statistics on students' enrollment, retention and graduation, course management, faculty and staff, student perception, international relations, research and other information about USEK.

The Fact Book serves multiple purposes: it provides support for decision making, it takes a part in the strategic planning since it reflects the current status of the University, it's a proof on the proficiency of the academic programs offered in USEK and it provides a snapshot on the different aspects and characteristics of USEK to both internal and external constituents.

I would like to express my gratitude to the colleagues from different units who took part in providing information for this book.

We would appreciate your feedback and comments to improve the quality and usability of this publication in its future releases. Please do not hesitate to contact us at [qualite@usek.edu.lb](mailto:qualite@usek.edu.lb) and let us know how we can serve you better.

Georges Yahchouchi, Ph.D.

Deputy President for Quality Assurance and Teaching & Learning

# Table of Contents

<b>Administration.....</b>	<b>5</b>
<b>Faculties/Institutes .....</b>	<b>5</b>
<b>Regional University Centers (RUC) .....</b>	<b>5</b>
<b>Organizational Chart .....</b>	<b>6</b>
<b>Fundamental Texts.....</b>	<b>7</b>
<b>Accreditations .....</b>	<b>7</b>
<b>International Relations.....</b>	<b>8</b>
List of Memberships.....	8
Memberships by Country.....	9
List of Agreements .....	10
Agreements by Country .....	16
Project Grants .....	17
Student and Staff Mobility Grants .....	18
<b>Research Projects .....</b>	<b>19</b>
<b>Library .....</b>	<b>21</b>
Collection Current status .....	21
Collection Future projections.....	22
<b>Students .....</b>	<b>23</b>
<b>Registered Students .....</b>	<b>23</b>
By Academic Unit .....	23
Fall 2012-2013 vs. Fall 2013-2014.....	24
By Cycle .....	24
By Campus/RUC .....	25
By Cycle and Academic Unit.....	26
By Program – All campuses.....	28
By Program and Campus – Fall 2013-2014 .....	36
By Nationality.....	46
By Gender .....	47
<b>Applications and Admissions .....</b>	<b>48</b>
USEK Open Doors - 2014.....	48
Applications and Admissions by Academic Unit .....	48
Applications and Admissions by Cycle .....	48
Applications and Admissions by Program – Fall 2013-2014 .....	49
<b>New Students.....</b>	<b>54</b>
By Academic Unit – Fall 2013-2014 .....	54
By Cycle – Fall 2013-2014 .....	54
By Campus & RUC – Fall 2013-2014.....	54
By Program – Fall 2013-2014 .....	55
By Program and Campus – Fall 2013-2014 .....	63
<b>Online Registration .....</b>	<b>73</b>
By Academic Unit – Fall 2013-2014 .....	73
By Cycle – Fall 2013-2014 .....	73

By Campus – Fall 2013-2014 .....	74
By Seniority – Fall 2013-2014.....	74
<b>Retention and Graduation .....</b>	<b>75</b>
Students not registered in 2013-2014 & not graduated in 2012-2013.....	75
Drop Out Ratio by Academic Unit .....	75
Graduated Students by Cycle – 2013-2014.....	76
Graduated Students by Academic Unit – 2013-2014.....	77
Graduated Students by Program – 2013-2014 .....	78
Graduated Students by Campus and Program – 2013-2014 .....	83
Time to Graduate by Program – 2013-2014 .....	89
Probation Rates by Cycle .....	94
Probation Rates by Academic Unit .....	94
Program Change Requests by Academic Unit.....	95
Program Change Requests by Program – Fall 2013-2014.....	96
Program Change Requests by Program – Spring 2013-2014 .....	99
<b>Course Management.....</b>	<b>101</b>
Variation of number of sections and average of Registered Students.....	101
Hourly Classroom Population – Fall 2013-2014.....	102
Grades Distribution .....	103
Changed Grades by Faculty/Institute .....	104
<b>Faculty and Staff .....</b>	<b>105</b>
Faculty members by type.....	105
Distribution of Full-time Faculty Members by Degree .....	105
Distribution of Full-time Faculty Members by Degree.....	106
Full-time Faculty Members Age Distribution .....	106
Full-time Faculty Members Age Distribution by Rank .....	107
Full-time Faculty Members Seniority at USEK.....	107
Faculty Applications and Recruitment .....	108
Staff Mobility .....	108
Number of travel requests by type.....	108
Number of travel requests by Country .....	108
<b>USEK Cares.....</b>	<b>109</b>
Financial Aid .....	109
Continuous Teaching & Learning Improvement .....	109
Course Feedback Survey Results.....	109
Course Self-Assessment by Faculty – Fall 2013-2014 .....	110
Peer Review of Teaching - PRT – Fall 2013-2014 .....	111
Welfare of people on campus .....	112
Students Participation – by Campus .....	112
Main factors for choosing USEK.....	112

General Impression on the services at USEK ..... 112  
Opinion concerning the taking into consideration of the answers..... 113

**Corporate Image ..... 115**

**Website ..... 115**

**Social Media ..... 115**

**E-learning ..... 116**

**E-portfolio..... 116**

# Administration

## Faculties/Institutes

USEK includes today 15 Academic Units (12 Faculties and 3 Institutes)

12 Faculties	Founding dates
Pontifical Faculty of Theology	1962
Faculty of Philosophy and Humanities	1962
Faculty of Letters	1962
Faculty of Law	1962
Faculty of Business and Commercial Sciences	1962 for the Canon Law / 1988 for the Faculty of Law
Faculty of Music	1966
Faculty of Fine and Applied Arts	1970 under the name of the Institute of Musicology 1993 under the name of the Faculty of Music
Faculty of Agricultural Sciences	1974
Faculty of Medicine and Medical Sciences	1988
Faculty of Sciences	2000 (Faculty of Sciences and Computer Engineering, split in 2010 into Faculty of Sciences and Faculty of Engineering)
Faculty of Engineering	2000 (Faculty of Sciences and Computer Engineering, split in 2010 into Faculty of Sciences and Faculty of Engineering)
Faculty of Religious and Oriental Studies	2011

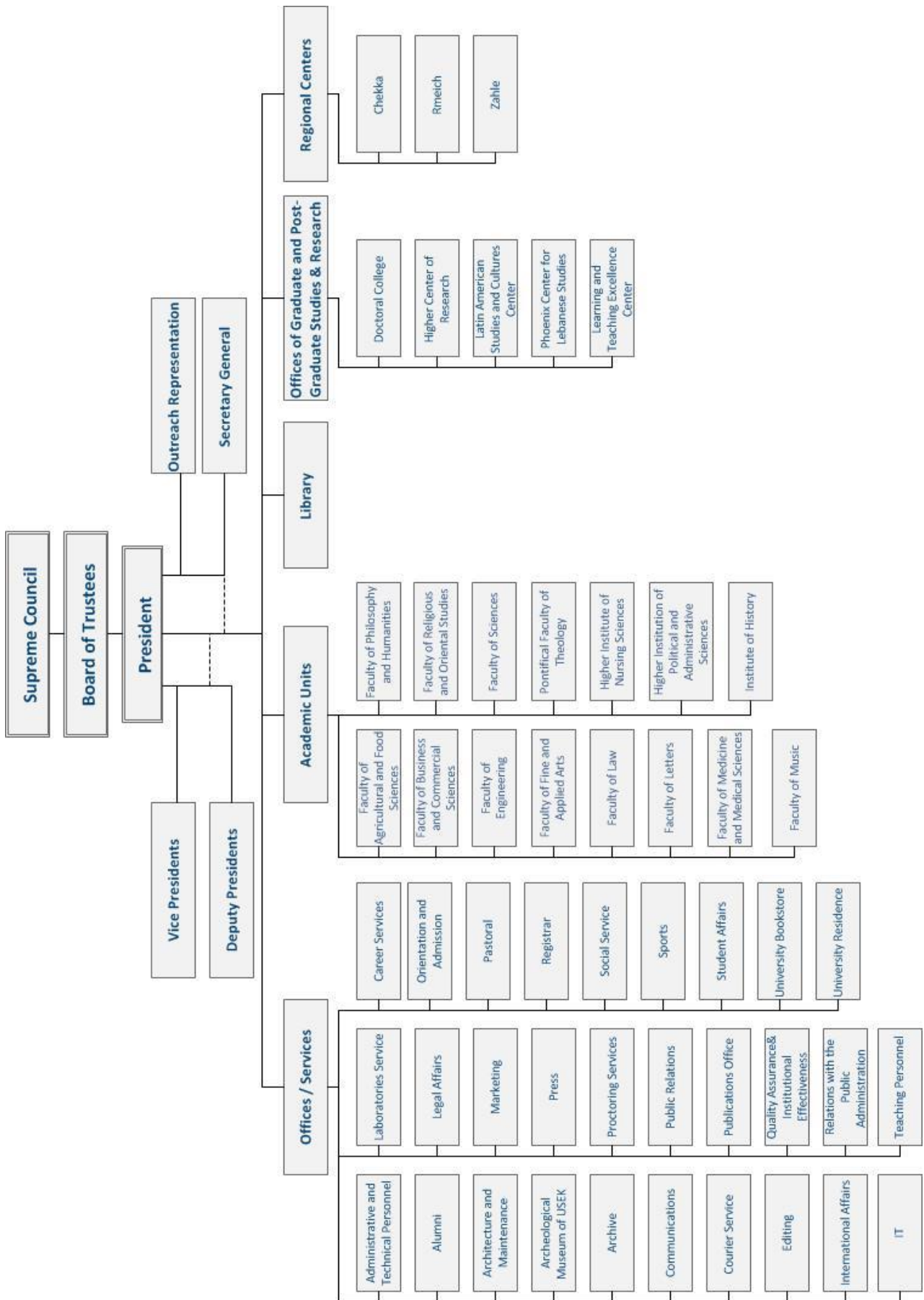
3 Institutes	Founding dates
Institute of History	1972
Higher Institute of Nursing Sciences	1999
Higher Institute of Political and Administrative Sciences	2006

## Regional University Centers (RUC)

3 Regional University Centers	Founding dates
RUC Zahle located in the Bekaa Valley	2000
RUC Chekka located in the North	2000
RUC Rmeich located in the South	2000



## Organizational Chart



## Fundamental Texts

Bylaws / Regulations
<u>USEK</u> Bylaws
Faculty Bylaws and Faculty Guide
<u>Academic</u> Life – Undergraduate
<u>Academic</u> Life – Graduate
<u>Doctoral</u> College Regulations
Information Technology User Policy
New Corporate Identity Guidelines
<u>Social</u> Media Policy and Guidelines
<u>Faculty</u> Remuneration Policy
<u>Research</u> Funding Policy
<u>Disciplinary</u> Statute at USEK
Grading System

In addition to around 70 procedures.

## Accreditations

Completed:

**Evalag European Institutional Accreditation**

Validity from 10/2012 till 09/2017

In progress:

**American Institutional Accreditation**

**MATRIX Accreditation for Student Support Services** – confirmed support visit in October 2014

**ABET Accreditation for 7 Engineering programs** – expected site visit in Fall 2015

**ABET Accreditation for 2 Computing Programs** – confirmed site visit on November 2015

**EQUIS Accreditation for Business Programs**

**NAAB for Architecture Program**

**NASAD for Arts and Design Programs**

**NASM for Music Program**

**ACEND for Nutrition and Dietetics Program**



## International Relations

### List of Memberships

- Association to Advance Collegiate Schools of Business (AACSB), United States
- Association of Asia-Pacific Business Schools (AAPBS), South Korea
- ACISE , France
- Agence Universitaire de la Francophonie (AUF), Canada
- American Council on Education , United States
- Arab Forum for Environment and Development (AFED) , Lebanon
- Association Conf. Int. des Doyens des Facultés de Médecine d'expression française (CIDMEF), France
- Association des Facultés et Établissements de Lettres et Sciences Humaines (AFELSH) , Canada
- Association des universités au Liban , Lebanon
- Association Internationale des Sociologues de Langue Française (AISLF) , France
- Association Internationale Espace Numérique Ouvert pour la Méditerranée (e-Omed) , France
- Association of Arab Universities , Jordan
- Association of Arts Colleges , United States
- Association of Business Schools ABS , United Kingdom
- Association of Catholic Colleges and Universities (ACCU) , United States
- Association of Chief Academic Officers (ACAO) – United States , United States
- Association of Collegiate Schools of Architecture (ACSA) , United States
- Association of Governing Boards of Universities and Colleges (AGB) , United States
- CHEA International Quality Group , United States
- Community of Mediterranean Universities (C.U.M), Italy
- Conférence de Psychologie universitaire de la FIUC (FIUCUP) , France
- Conférence des Recteurs de la région du Moyen-Orient (CONFREMO) , Lebanon
- Conférence Internationale des Formations d'Ingénieurs et Techniciens d'expression française (CITEF) , France
- Conférence Internationale des Responsables des Universités et Instituts Scientifiques d'expression française (CIRUISEF) , Canada
- Conférence Mondiale des Institutions Universitaires Catholiques de Philosophie (COMIUCAP) , Italy
- European Association for International Education , Netherlands
- European Association of Career Guidance , Cyprus
- European Foundation for Management Development (EFMD) , Belgium
- European University Association (EUA) , Belgium
- Fédération des universités catholiques européennes (FUCE), Belgique
- Fédération internationale des universités catholiques (FIUC), France
- Global Engineering Deans Council , United States
- Institut de l'Audit Social (IAS) , France
- International Association for Educational and Vocational Guidance (IAEVG) - Career Office , Canada
- International Association of Universities (IAU) , France
- International Association of University Presidents (IAUP) , United States

- International Corporate Governance Network (ICGN), United Kingdom
- International Federation of Library Associations and Institutions (IFLA) , Netherlands
- International Network for Quality Assurance Agencies in Higher Education (INQAAHE) , Spain
- NASFA , United States
- National Career Development Association , United States
- Principles for Responsible Management Education (PRME) , United States
- Réseau International d'Ecoles doctorales en sociologie (Rédoc) , France
- Réseau International Francophone des Etablissements de Formation de Formateurs (RIFEFF) , Canada
- Réseau Méditerranéen des Ecoles d'Ingénieurs (RMEI) , France
- Society of Colleges of Science In Arab Universities , Jordan
- Union des Universités de la Méditerranée (UNIMED) , Italy
- Who's Who - Historical Society , United States
- Yarmouk University , Jordan

### Memberships by Country

Country	Nb of Institutions	%
United States	14	29%
France	11	22%
Canada	5	10%
Italy	3	6%
Jordan	3	6%
Lebanon	3	6%
Belgium	3	6%
Netherlands	2	4%
United Kingdom	2	4%
Cyprus	1	2%
South Korea	1	2%
Spain	1	2%
<b>Total</b>	<b>49</b>	

## List of Agreements

### General Agreements

Institution	Country
Lumière University, Lyon II – France	France
Catholic University of Lyon - France	France
University of Poitiers - France	France
University of Montesquieu, Bordeaux IV - France	France
Catholic Institute of Toulouse - France	France
Catholic University Eichstatt-Ingolstadt -Germany	Germany
Federal University of Santa Maria -Brazil	Brazil
Lebanese University - Lebanon	Lebanon
UNIMED - Italy	Italy
Paraná Federal University -Brazil	Brazil
University of Chester -United Kingdom	United Kingdom
University of Istanbul -Turkey	Turkey
Catholic University of Louvain -Belgium	Belgium
Péter Pázmány Catholic University -Hungary	Hungary
University of the Littoral Opal Coast -France	France
Paris-Sud 11 University -France	France
Université de Yarmouk -Jordan	Jordan
Muséum National d'Histoire Naturelle –France	France
University of Jordan -Jordan	Jordan
Université Catholique Pontificale de Goias -Brazil	Brazil
Georges Mason University -Virginia	United States
Université Paris-Est Créteil Val de Marne -France	France
Universidad Nacional de Tres de Febrero –Argentina	Argentina
Universidad Argentina John F. Kennedy - Argentina	Argentina
Central University of Chile - Chile	Chile
Université Paris Descartes - France	France
Universidad del Salvador -Argentine	Argentina
Université Pontificale Catholique de Sao Paolo -Brazil	Brazil
Florida Institute of Technology - United States	United States

**Faculty of Fine and Applied Arts**

Institution	Country
Saint Luke Higher School of Architecture - Belgium	Belgium
Toulouse School of Architecture - France	France
Strasbourg School of Architecture - France	France
Special School of Architecture- Paris (ESA) - France	France
Laval University -Canada	Canada
Clermont-Ferrand School of Architecture - France	France
Arles National School of Photography - France	France
Instituto Universitario Di Architettura Di Venezia -Italy	Italy
La Sapienza University of Rome -Italy	Italy
National Center for Scientific Research -France	France
Sorbonne Nouvelle University, Paris III - France	France
University of Strasbourg- France	France
Università Degli Studi Roma Tre -Italy	Italy
Universidad La Salle –Mexico	Mexico
Mission archéologique de Tyr- France	France

**Faculty of Law**

Institution	Country
University of Montpellier I - France	France
University of Paris I, Pantheon Sorbonne- - France	France
University of Jordan -Jordan	Jordan
EBS Universitat fur Wirtschaft und Recht –Germany	Germany
Leiden Law School - Netherlands	Netherlands
Florida State University- United States	United States
Université Pierre Mendès France de Grenoble - France	France
Faculté de Droit et des Sciences Sociales de l'Université de Poitiers- France	France

**Faculty of Business and Commercial Sciences**

Institution	Country
EDHEC Business School, Lille and Nice - France	France
University of Liege - Belgium	Belgium
Superior School of Trade of Marseille - France	France
University of La Rochelle - France	France
Paris-Sud 11 University- France	France
Le Cordon bleu international - France	France
HEC Montréal - Canada	Canada
Euromed Marseille School of Management - France	France
ESCA Business School - Morocco	Morocco
Paris-Dauphine University - France	France
Panthéon-Assas University Paris II -France	France
Jean Moulin University, Lyon 3 - France	France
University of Stellenbosch for Business - South Africa	South Africa
University of Robert Schuman - France	France
Business School of Geneva - Switzerland	Switzerland
George Washington University – United States	United States
Business Enterprise for Media and Publishing	Lebanon
European Foundation for Management Development	Belgium
Master Capital Group - Lebanon	Lebanon
EBS Universität für Wirtschaft und Recht - Germany	Germany
Zagreb School of Economics and Management - Croatia	Croatia
Rouen Business School - France	France
ICHEC-Brussels Management School - Belgium	Belgium
Université Pierre Mendès France de Grenoble - France	France
Lewis University - Illinois	United States
Morgan International- Lebanon	Lebanon
International University of Dakar- Senegal	Senegal
Fundacion Universidad Francisco de Vitoria- Spain	Spain

**Faculty of Letters**

Institution	Country
University of Paris-Sorbonne, Paris IV - France	France
University of Caen Basse-Normandie - France	France
University of Provence, Aix-Marseille I - France	France
Sorbonne Nouvelle University, Paris III - France	France
National Institute of Oriental Languages and Civilizations -France	France
Lumière University Lyon II -France	France
Catholic University of Louvain - Belgium	Belgium
The Communication Sciences Institute – National Center for Scientific Research	France
Agence Espagnole de Coopération Internationale	Spain
Université Paul Valéry, Montpellier III - France	France
Université du Sud Toulon Var- France	France
Univeristé Paris 8 Saint Denis - France	France

**Faculty of Medicine and Medical Sciences**

Institution	Country
Paris-Sud 11 University - France	France
University François Rabelais de Tours - France	France
University of Montpellier I - France	France
Catholic University of Louvain - Belgium	Belgium
University of Sherbrooke- Canada	Canada
Université Pierre et Marie Curie - France	France
Centre Hospitalier Saint-Denis - France	France
Université Paris Descartes - France	France

**Faculty of Sciences**

Institution	Country
Claude Bernard University, Lyon I - France	France
National Polytechnic Institute of Lorraine - France	France
Paris-Sud 11 University- France	France
Digipen USA Corporation	United States
University of Bordeaux I - France	France
University of Technology of Belfort-Montbéliard - France	France
Ecole Nationale d'ingénieurs des travaux agricoles de Clermont-Ferrand - France	France
Institut National Agronomique Paris Grignon - France	France
University of Rennes 1 – France	France
University of Poitiers - France	France
Catholic University of Louvain - Belgium	Belgium
Central School of Marseille - France	France
ESEO Angers - France	France
AgroParisTech - France	France
Mediterranean Network of Basin Organizations	Spain
University of SIDI Mohamed Ben Abdellah De Fes -Morocco	Morocco
University of Provence, Marseille - France	France
Ministère Libanais de l'Environnement	Lebanon
Ambassade de l'Eau	Lebanon
Soft Solutions	Lebanon
Secrétariat Général des Écoles Catholiques au Liban	Lebanon
New Jersey Institute of Technology - U.S.A	United States
Université Pierre et Marie Curie - France	France

**Faculty of Music**

Institution	Country
University of Tunis - Tunisia	Tunisia
University of Yarmouk -Jordan	Jordan

**Faculty of Philosophy and Humanities**

Institution	Country
René Descartes University, Paris V - France	France
University of Tunis - Tunisia	Tunisia
Catholic University of the West - France	France
Laval University - Canada	Canada
University of Rouen - France	France
University of Victor Segalen-Bordeaux II - France	France
Catholic University of Louvain - Belgium	Belgium
Catholic University of Lyon - France	France
University of Poitiers – France	France
Universita Pontificia Salesienna Roma - Italy	Italy

**Faculty of Engineering**

Institution	Country
Université de Poitiers- France	France
Ecole Polytech Lyon (Université Claude-Bernard Lyon I)- France	France
Institut National Polytechnique de Lorraine- France	France
Ecole Supérieure de chimie physique électronique de Lyon (CPE LYON) - France	France
Center for Advanced Medical Imaging Science of Massachusetts General Hospital – United States	United States

**Faculty of Agricultural and Food Sciences**

Institution	Country
National Polytechnic Institute of Lorraine - France	France
Rhône Alpes Higher Institute of Agriculture - France	France
Agropolis - France	France
Institut Supérieur Agricole de Beauvais - France	France
FESIA Consortium	France
Paris-Sud 11 University - France	France
Saint-Joseph University - Lebanon	Lebanon
Claude Bernard University, Lyon I - France	France
ENITA of Clermont-Ferrand - France	France
University of Perugia -Italy	Italy
University of Milan - Italy	Italy
University of Sassari - Italy	Italy
Associazione Internazionale Slow Food – Italy	Italy
AgroParisTech - France	France
The Industrial Research Institute (IRI)	Lebanon
Centre International de Hautes Études Agronomiques Méditerranéennes-Institut Agronomique Méditerranéen de Bari (CIHEAM-IAMB) - Italy	Italy
Université Catholique de Lyon - France	France
Université de Valenciennes et du Hainaut, Cambrésis - France	France
Association Terroirs & Cultures International - France	France
Brandenburg University of Technology Cottbus - Germany	Germany
Ecole Pratique des Hautes Etudes - France	France
Institut National Polytechnique Toulouse - France	France

**Pontifical Faculty of Theology**

Institution	Country
Catholic Institute of Paris - France	France
Baghdad University - Iraq	Iraq
Catholic University of Louvain - Belgium	Belgium
Faculty of Theology of Lyon - France	France

**Institute of History**

Institution	Country
Paul-Valery University, Montpellier III - France	France
Paris-Sorbonne University, Paris IV - France	France
Catholic University of Louvain - Belgium	Belgium
Université du Maine	France
Université de Genève	Switzerland
Université Ibn Zohr	Morocco
Université Libre de Bruxelles	Belgium

**Higher Institute of Political and Administrative Sciences**

Institution	Country
Université catholique de Louvain (UCL) - Belgium	Belgium
Institut d'Études Politiques de Lyon (IEP) - France	France
Institut Catholique de Paris- France	France
Université Paris I, Panthéon Sorbonne – France	France
Université Pierre Mendès France de Grenoble - France	France

**Quality Assurance and Institutional Effectiveness Office**

Institution	Country
University of Texas at Austin- United States	United States
Norwich University	United States



## Agreements by Country

Country	Nb of Agreements	%
France	98	54%
Belgium	13	7%
Italy	10	6%
Lebanon	10	6%
United States	10	6%
Brazil	4	2%
Canada	4	2%
Germany	4	2%
Jordan	4	2%
Argentina	3	2%
Morocco	3	2%
Spain	3	2%
Switzerland	2	1%
Tunisia	2	1%
Chile	1	1%
Croatia	1	1%
Hungary	1	1%
Iraq	1	1%
Mexico	1	1%
Netherlands	1	1%
Senegal	1	1%
South Africa	1	1%
Turkey	1	1%
United Kingdom	1	1%
<b>Total</b>	<b>180</b>	

## Project Grants

Year	Area	Institution	Concerned Unit	Project Title
2013	Research	AUF	Doctoral College	Formation doctorale "Histoire des textes arabes anciens " Février et juin 2013
2013	Research	AUF	Doctoral College	Le Plagiat : fléau du XXI <sup>e</sup> siècle, 5-6 décembre 2013
2011-2014	Training	AUF	Agricultural and Food Sciences	Projet 2011-2014 "Préservation et développement du patrimoine culturel libanais à l'aide de la gastronomie moléculaire"
	Gouvernance	AUF		Tempus OIPULES - Orientation et insertion professionnelle dans les universités du Liban, de l'Egypte et de la Syrie
2013	Gouvernance	USAID	International Affairs Office	Expand Your Horizons - 2013
2013	Cooperation	ENPI	International Affairs Office, Philosophy and Humanities	Drop-Out Prevention of Students
2013	Research and Training	TEMPUS	International Affairs Office	Hermes Project
2013	Gouvernance	TEMPUS		Apprentissage à distance et innovation pédagogique
2013		TEMPUS	Engineering	Highway and Traffic Engineering: Curricular Reform for Mediterranean Area
2013	Training	TEMPUS		Qualité en Enseignement Supérieur Agronomique en Méditerranée (QESAMED)
2013		TEMPUS	Law	T-MEDA - Tuning Middle East and North Africa
2013	Training	TEMPUS	Sciences	Cooperation for Europ Mediterranean Master in Neurosciences and Biotechnology (ISIS)
2014	Research	PCSI	Engineering	«PAPE : Prédiction de l'Accouchement Prématuro par analyse de l'Electrohystérogramme» présenté dans le cadre de l'appel d'offres pour les « Projets de coopération scientifique inter-universitaire »

## Student and Staff Mobility Grants

2013-2014

Type	Institution	Type of support	Description	Name of the beneficiary and Academic Unit
Research	AUF	Grant for doctoral study	4 doctoral mobility allocations 3 to 6 months, of which 2 renewable	AL HAFI Monay, Medicine
				EFREM Micheline, Law
				KHOURY Madona, Biology
		NEHME Bechara, Engineering		
	AUF	Horizons Francophones Doctoral Mobility	1 doctoral mobility allocations 3 to 6 months, renewable and dedicated to University staff	AKL Adib, Engineering
Training	AUF	Network Mobility	Participation in the meeting "Jeunes Scientifiques en réseau"	SALLOUM Charbel, Faculty of Business and Commercial
	AUF	Grant for Master studies	1 mobility allocation of one semester	EL KHOURY Liza, Faculty of Sciences
	AUF	Scientific cooperation mission	1 mission for one to two weeks	GOUTAUDIER Christelle
	AUF	Grant for open and distance trainings (FOAD)	Partial support for registration fees	HAMAOUI Michelle

2014-2015

Type	Institution	Type of support	Description	Name of the beneficiary and Academic Unit
Research	AUF	Grant for doctoral study	2 allocations	M. Elie BOU ASSI from USEK- « Conception d'un EEG à multi-canaux pour des applications d'interfaçage cerveau-appareils portables »
				Mlle Lea NEHME from USEK- « Étude de l'effet de la culture et des émotions sur la construction du lien entre odeurs et couleurs »
	AUF	Grants for Development Training and	1 allocation	MAALOUF MONNEAU May

		Research		
	Institut Français	Scientific Visiting Fellowship	7	Faculty of Business and Commercial Sciences, Faculty of Engineering, Faculty of Medicine, Library
<b>Training</b>	AUF	Master and internship study grants	1 allocation	ZIND Hiba
	Institut Français	Mission in Lebanon	6	Doctoral College, Faculty of Business and Commercial Sciences, Faculty of Agricultural and Food Sciences
	Institut Français	Invitation to France	1	Faculty of Agricultural and Food Sciences

## Research Projects

### Call for funding projects by the Higher Center for Research

Call for research projects	Date	Nb. of submitted projects	Nb. of projects won	Ratio
1st call	2006	12	6	50%
2nd call	2009	19	10	53%
3rd call	2010	25	12	48%
4th call	2011	12	9	75%
5th call	2013	15	8	53%

## Current funding projects by the Higher Center for Research

HCR call	Faculty	Research project title
3rd call	Agricultural and Food Sciences	Predictive modeling of the productive quality and environmental and genotypic characterization of Lebanese olive species
3rd call	Business and Commercial Sciences	University Image and its relationship to the Students' Satisfaction
3rd call	Business and Commercial Sciences	Determining the success of a Customer Relationship Management CRM system
3rd call	Engineering	Optimization of transmission systems performance 3GPP LTE = (3rd generation partnership project, long term evolution) in the context of cooperative communications
3rd call	Letters	Critical edition of the Annals of Douaihi. Identifying sources and French and English translation.
3rd call	Sciences	Energy performance of buildings: diagnosis and energy audit
3rd call	Sciences	Effect of smoking on the orientation of the immune response in sane smokers and smokers affected with lung cancer
3rd call	Sciences	Monitoring the evolution of tributyltin and risk assessment of environmental contamination
3rd call	Sciences	Study of the aromatic potential of Syrah wine and mash
4th call	Engineering	Design of Neural Prosthesis Using Brain Computer interface
4th call	Medicine and Medical Sciences	Search for susceptibility genes of Autism and identification of factors pré-péri and postnatal risks within the Lebanese population
4th call	Medicine and Medical Sciences	Thrombotic microangiopathy (TMA) in Lebanon
4th call	Sciences	Analysis of priority and emerging pollutants in discharges, water resources and drinking water. Comparative study France Lebanon
4th call	Sciences	Study of a hybrid power station for lighting
4th call	Sciences	Development of educational robotics in schools
5th call	Agricultural and Food Sciences	Unprecedented study of nutritional aspects of Lebanese sea fish, with special emphasis on fatty acid composition
5th call	Agricultural and Food Sciences	Mushroom Research Centre of USEK (MRC)
5th call	Business and Commercial Sciences	The new era of red wine production "a combination of speed, safety and quality". A Comparative Study of the Mediterranean Basin Countries
5th call	Business and Commercial Sciences	The impact of the Administrative Board characteristics in the performance of family businesses
5th call	Engineering	Renewable energy: photovoltaic panels
5th call	Engineering	Image processing techniques to enhance the quality and content analysis
5th call	Sciences	Radionuclides in phosphogypsum rejected by the industries of phosphate fertilizers
5th call	Sciences	Bioaccumulation potential and balanced air / water content of some xenobiotics in food. Antibiotic control analyzes in meat

**Distribution of current funding projects by Faculty**

Faculty	Nb of projects	Ratio
Agricultural and Food Sciences	3	13%
Business and Commercial Sciences	4	17%
Engineering	4	17%
Letters	1	4%
Sciences	9	39%
Medicine and Medical Sciences	2	9%
<b>Total</b>	<b>23</b>	

**Library**

**Collection Current status**

- The number of Computer Sciences print monographs: 2322
- The number of print journal titles: 5 titles
- Electronic Resources for 2012- 2013:

Title	Description
Academic Search Premier	Provides access to 1500 Engineering journals titles
IEL: IEEE/IEE Electronic Library	Archives of 12,000 publications (journals, conference proceedings, and IEEE/IEE Standards) from 1988
EBSCO eBooks and audiobooks	Over 8,500 books available for online viewing or download to a computer or mobile device.  A selection of 3,500 audiobooks available to download to your computer or mobile device.
Proquest Central	Provides access to more 8,000 publications in full text. Covers current and international content in over 160 subject areas such as: business and economics; medical and health; news and world affairs; science; education; technology; humanities; social sciences; psychology; literature; law; and, women's studies. Includes the following databases: Pharmaceutical news index; ProQuest biology journals; ProQuest computing; ProQuest health and medical complete; ProQuest military collection; ProQuest science journals; ProQuest telecommunications; Research library; and: Snapshot series
ScienceDirect Freedom Collection	Provides access to more than 500 Engineering titles the current year (2011) content plus backfiles to 2007

Additional e-resources:

- JSTOR Life Sciences Archive Collection
- JSTOR Life Sciences Current Collection
- Multi Data Online
- Scopus
- Universalis

### Collection Future projections

The Library is planning to develop the collection in the Engineering field to include the below mentioned electronic resources as a start:

Title	Description
AccessEngineering	Provides access to 306 publications from a broad range of McGraw-Hill engineering publications in 14 major areas of engineering
ASTM Standards	Allows the downloading of any of ASTM International's 12,000+ standards, covering metals, petroleum, construction, the environment, and more.
eBrary	Growing collection of more than 60,000 full-text digital books and authoritative content (multidisciplinary) from over 200 leading academic publishers in major fields of study
Sage Premiere Collection	Is a full-text database of 30 journals published by Sage publishers in the field of Engineering
SpringerLink Core Collection	Provides access to 66 Engineering journals titles: the current year content plus backfiles to 1997

# Students

## Registered Students

### By Academic Unit

Academic Unit	201410		201420	
	Nb of Students	Ratio*	Nb of Students	Ratio*
Faculty of Fine and Applied Arts	2553	31.0%	2378	30.6%
Faculty of Law	271	3.3%	257	3.3%
Faculty of Engineering	734	8.9%	690	8.9%
Faculty of Sciences	459	5.6%	423	5.4%
Faculty of Business and Commercial Sciences	1923	23.3%	1786	23.0%
Faculty of Letters	356	4.3%	329	4.2%
Faculty of Medicine and Medical Sciences	296	3.6%	294	3.8%
Faculty of Music	103	1.2%	98	1.3%
Faculty of Philosophy and Humanities	340	4.1%	326	4.2%
Faculty of Agricultural and Food Sciences	493	6.0%	460	5.9%
Faculty of Religious and Oriental Studies	23	0.3%	23	0.3%
Pontifical Faculty of Theology	184	2.2%	189	2.4%
Institute of History	18	0.2%	17	0.2%
Higher Institute of Nursing Sciences	23	0.3%	23	0.3%
Higher Institute of Political and Administrative Sciences	66	0.8%	71	0.9%
Languages Center	22	0.3%	15	0.2%
School of Music	336	4.1%	343	4.4%
School of Theology	26	0.3%	26	0.3%
Other	17	0.2%	24	0.3%
<b>Total</b>	<b>8243</b>		<b>7772</b>	

\*ratio compared to student population



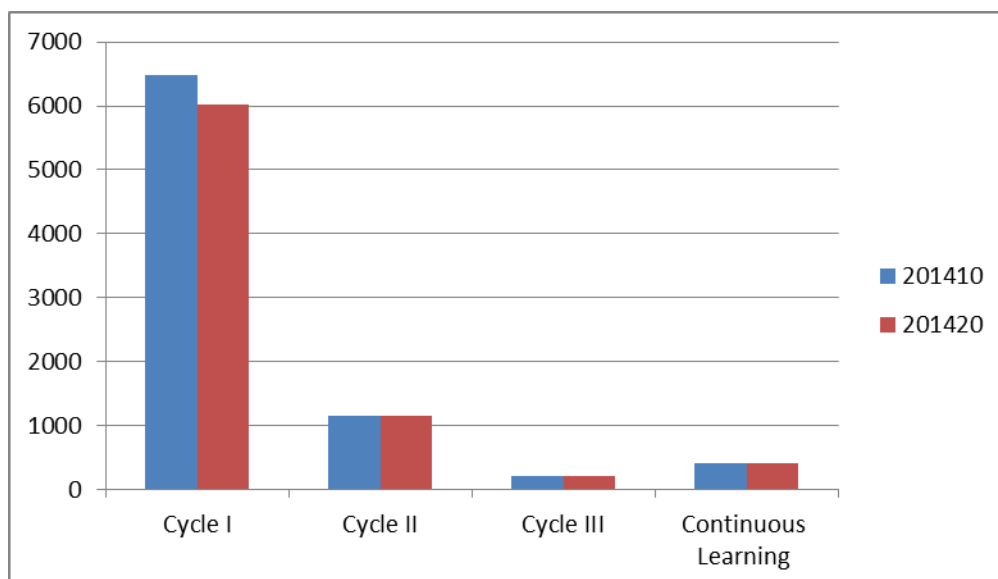
## Fall 2012-2013 vs. Fall 2013-2014

Academic unit	Fall 2012-2013	Fall 2013-2014	Evolution
Faculty of Fine and Applied Arts	2374	2553	7.54%
Faculty of Law	278	271	-2.52%
Faculty of Engineering	590	734	24.41%
Faculty of Sciences	485	459	-5.36%
Faculty of Business and Commercial Sciences	1981	1923	-2.93%
Faculty of Letters	404	356	-11.88%
Faculty of Medicine and Medical Sciences	284	296	4.23%
Faculty of Music	99	103	4.04%
Faculty of Philosophy and Humanities	303	340	12.21%
Faculty of Agricultural and Food Sciences	458	493	7.64%
Faculty of Religious and Oriental Studies		23	100.00%
Pontifical Faculty of Theology	200	184	-8.00%
Higher Institute of Nursing Sciences	20	23	15.00%
Higher Institute of Political and Administrative Sciences	56	66	17.86%
Institute of History and Archeology	20	18	-10.00%
Institute of Liturgy	18		-100.00%
Schools of Letters, Music, Theology and other	422	408	-3.31%
<b>Total</b>	<b>7992</b>	<b>8243</b>	<b>3.14%</b>

## By Cycle

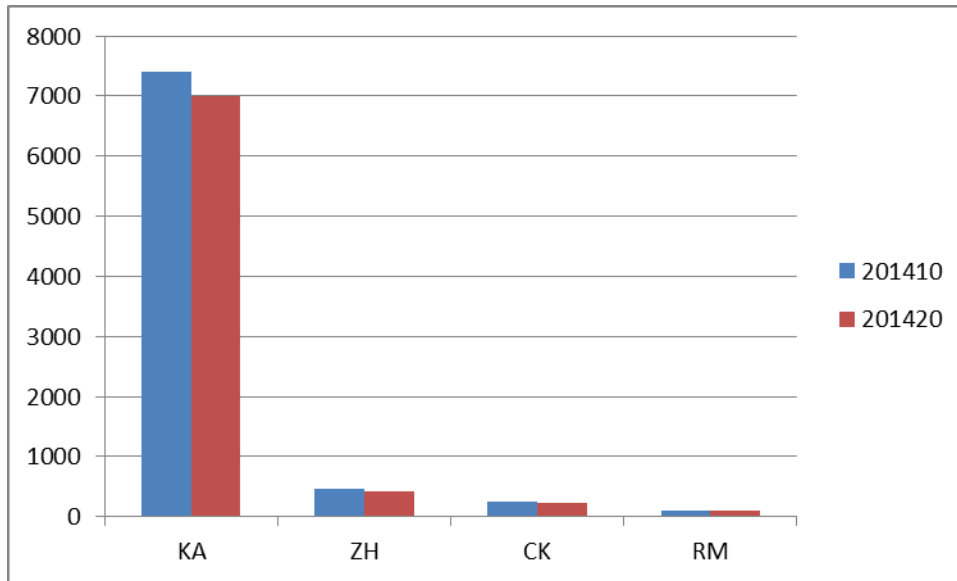
Cycle	201410		201420	
	Nb. of Students	Ratio*	Nb. of Students	Ratio*
Cycle I	6474	78.5%	6023	77.5%
Cycle II	1155	14.0%	1143	14.7%
Cycle III	210	2.5%	205	2.6%
Continuous Learning	404	4.9%	401	5.2%
<b>Total</b>	<b>8243</b>		<b>7772</b>	

\*ratio compared to student population



## By Campus/RUC

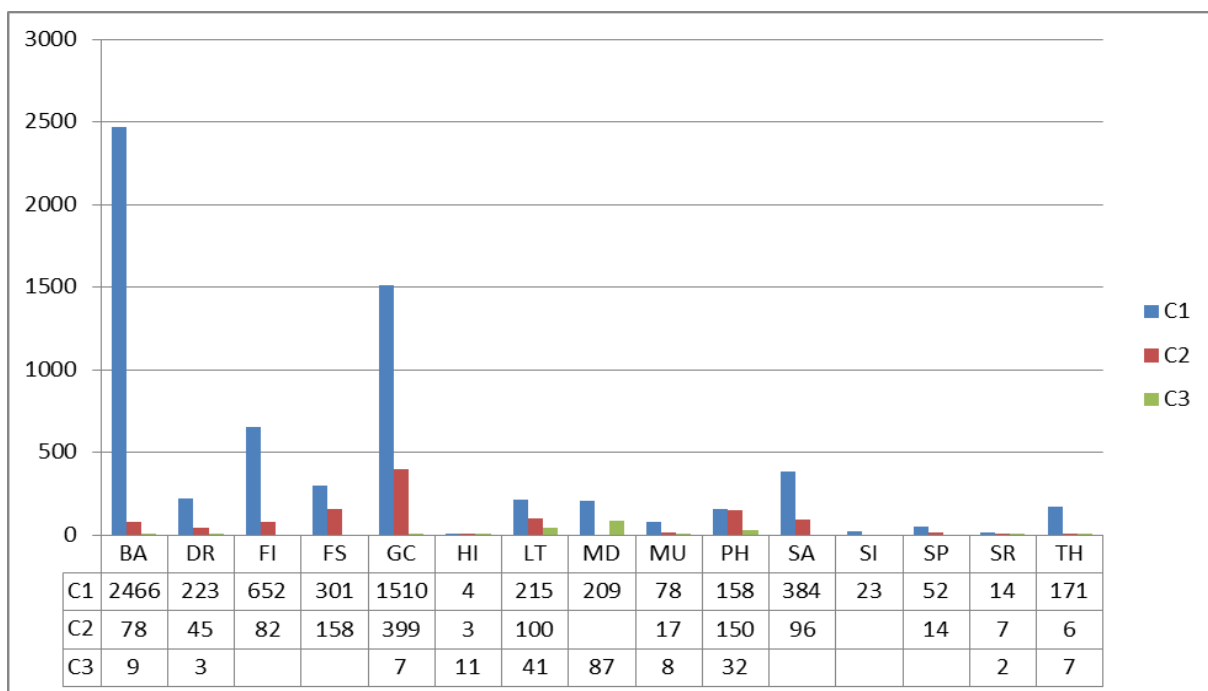
Campus/RUC	201410		201420	
	Nb. of Students	Ratio	Nb. of Students	Ratio
Campus Kaslik	7410	89.9%	7007	90.2%
RUC Zahleh	471	5.7%	432	5.6%
RUC Chekka	257	3.1%	232	3%
RUC Rmeich	105	1.3%	101	1.3%
<b>Total</b>	<b>8243</b>		<b>7772</b>	



## By Cycle and Academic Unit

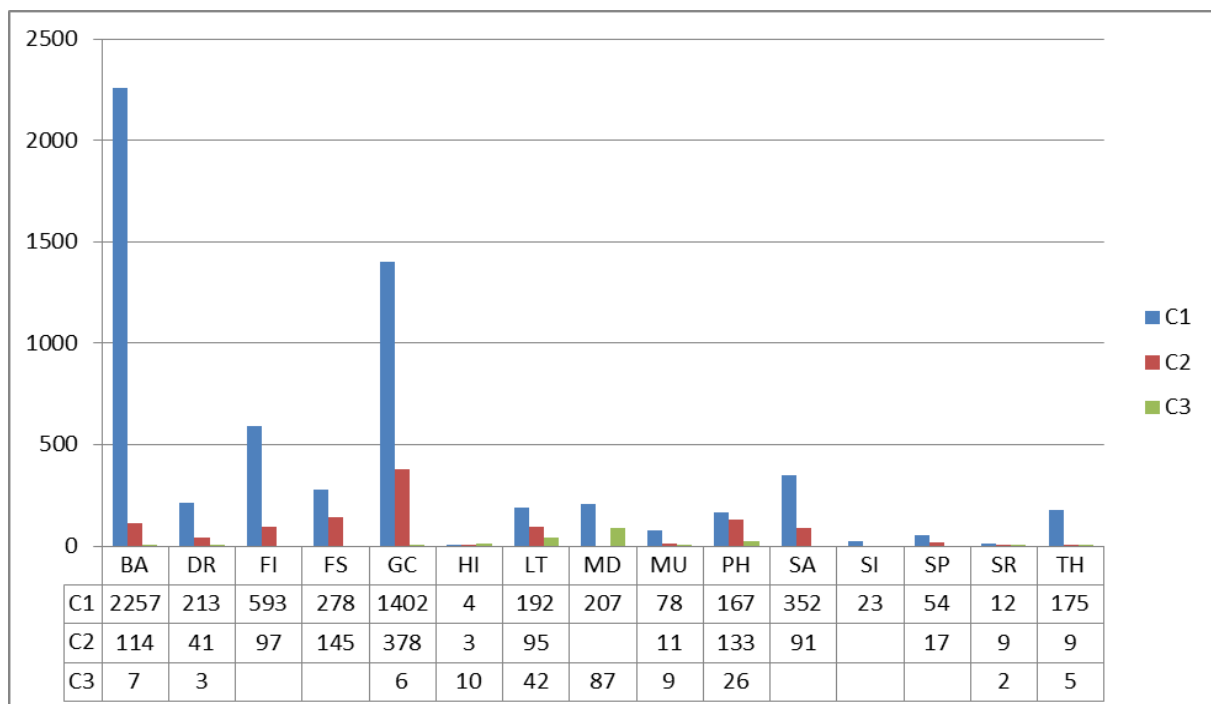
Fall 2013-2014

Academic Unit	C1	C2	C3	FC	Total
Faculty of Fine and Applied Arts	2466	78	9		2553
Faculty of Law	223	45	3		271
Faculty of Engineering	652	82			734
Faculty of Sciences	301	158			459
Faculty of Business and Commercial Sciences	1510	399	7	7	1923
Faculty of Letters	215	100	41		356
Faculty of Medicine and Medical Sciences	209		87		296
Faculty of Music	78	17	8		103
Faculty of Philosophy and Humanities	158	150	32		340
Faculty of Agricultural and Food Sciences	384	96		13	493
Faculty of Religious and Oriental Studies	14	7	2		23
Pontifical Faculty of Theology	171	6	7		184
Institute of History	4	3	11		18
Higher Institute of Nursing Sciences	23				23
Higher Institute of Political and Administrative Sciences	52	14			66
Languages Center				22	22
School of Music				336	336
School of Theology				26	26
Other	14		3		17
<b>Total</b>	<b>6474</b>	<b>1155</b>	<b>210</b>	<b>404</b>	<b>8243</b>



## Spring 2013-2014

Academic Unit	C1	C2	C3	FC	Total
Faculty of Fine and Applied Arts	2257	114	7		2378
Faculty of Law	213	41	3		257
Faculty of Engineering	593	97			690
Faculty of Sciences	278	145			423
Faculty of Business and Commercial Sciences	1402	378	6		1786
Faculty of Letters	192	95	42		329
Faculty of Medicine and Medical Sciences	207		87		294
Faculty of Music	78	11	9		98
Faculty of Philosophy and Humanities	167	133	26		326
Faculty of Agricultural and Food Sciences	352	91		17	460
Faculty of Religious and Oriental Studies	12	9	2		23
Pontifical Faculty of Theology	175	9	5		189
Institute of History	4	3	10		17
Higher Institute of Nursing Sciences	23				23
Higher Institute of Political and Administrative Sciences	54	17			71
Languages Center				15	15
School of Music				343	343
School of Theology				26	26
Other	16		8		24
<b>Total</b>	<b>6023</b>	<b>1143</b>	<b>205</b>	<b>401</b>	<b>7772</b>



## By Program – All campuses

### Faculty of Fine and Applied Arts

Code	Description	Cycle	Fall 2012-2013	Fall 2013-2014
LIC-AGR	Bachelor in Graphic Design	C1		109
LIC-DAA	Bachelor in Design and Applied Arts	C1		512
LIC-PUB	Bachelor of Arts in Advertising	C1		48
LIC-ARS	Bachelor of Arts in Sacred Art	C1	6	6
LIC-AVS	Bachelor of Arts in Visual and Performing Arts	C1	288	279
DES-AGR	Master in Graphic Design	C1	162	45
DES-ARC	Master in Architecture	C1	1246	1346
DES-ARI	Master in Interior Design	C1	560	103
DES-PUB	Master in Advertising	C1	63	18
MS-ARS	Master of Arts in Sacred Art	C2	9	13
MS-ASC	Master in Performing Arts	C2	7	7
MS-AV-AVM	Master in Visual Arts - Audiovisual, Multimedia	C2	7	5
MS-AV-CIN	Master in Visual Arts - Cinema	C2	15	13
MS-AV-PHO	Master in Visual Arts - Photography	C2	2	3
MS-AV-TV	Master in Visual Arts - Television	C2	3	2
MA-ARI	Master in Interior Design	C2		35
DOC-ARS	Ph.D. in Sacred Art	C3	1	1
DOC-AVS-CT	Ph.D. in Cinema and Television	C3	6	7
DOC-AVS-THEA	Ph.D. in Theater	C3	3	1

### Faculty of Law

Code	Description	Cycle	Fall 2012-2013	Fall 2013-2014
LIC-DRT	Degree in Law	C1	175	198
LIC-DRTA	Law (English section)	C1	18	25
DEA-DRT	Master in Law	C2	56	31
MA-DRT	Master in Law	C2		7
MPAM-DRT	Professional Master – Law of Arbitration and Mediation in international affairs	C2	6	2
MPBF-DRT	Professional Master – Law of banking and finance	C2	3	1
MPCI-DRT	Professional Master – Law of international contracts	C2	15	4
DOC-DRT	Ph.D. in Law	C3	5	3

**Faculty of Engineering**

Code	Description	Cycle	Fall 2012-2013	Fall 2013-2014
LIC-ING	Bachelor of Sciences in Engineering Sciences	C1	503	637
DI-GIT-FI	Computer and Communication Engineering	C1	50	15
MG-BMD	Master in Biomedical Engineering	C2	6	10
MG-CHM	Master in Chemical Engineering	C2	3	3
MG-ELE	Master in Electrical and Electronic Engineering	C2	5	9
MG-INF	Master in Computer Engineering	C2	1	5
MG-MEC	Master in Mechanical Engineering	C2	15	25
MG-TEL	Master in Telecom Engineering	C2	7	30

**Faculty of Sciences**

Code	Description	Cycle	Fall 2012-2013	Fall 2013-2014
LIC-BCHA-FS	Bachelor of Science in Biochemistry	C1	1	3
LIC-BCH-FS	Bachelor of Science in Biochemistry (Fr)	C1	99	99
LIC-CHM-FS	Bachelor of Science in Chemistry	C1	13	12
LIC-ELE-FS	Bachelor of Science in Electronics	C1	8	2
LIC-INFA-FS	Bachelor of Science in Computer Science	C1	84	79
LIC-INTA-FS	Bachelor of Science in Information Technology	C1	41	37
LIC-MAF-FS	Bachelor of Science in Actuarial and Financial Mathematics	C1	3	15
LIC-MAS-FS	Bachelor of Science in Actuarial Mathematics and Statistics	C1	25	19
LIC-MAT-FS	Bachelor of Science in Mathematics	C1	2	3
LIC-SVT-FS	Bachelor of Sciences in Life and Earth Sciences	C1	22	32
MS-BCHA-FS	Master of Science in Biochemistry	C2	4	7
MS-BCH-FS	Master of Science in Biochemistry (Fr)	C2	75	67
MS-CHM-FS	Master of Science in Chemistry	C2	32	21
MS-INFA-FS	Master of Science in Computer Science	C2	11	9
MS-MAF-FS	Master of Science in Actuarial and Financial Mathematics	C2	1	8
MS-MAS-FS	Master of Science in Actuarial Mathematics and Statistics	C2	11	7
MS-MAT-FS	Master of Science in Mathematics	C2	15	9
MS-MMA-FS	Master in math modeling & Application	C2	5	
MS-MTR-FS	Master in Mechatronics	C2	1	
MS-SVTA-FS	Master of Science in Life and Earth Sciences	C2	4	
MS-SVT-FS	Master of Science in Life and Earth Sciences	C2	28	25
MS-TINA-FS	Master of Science in in Information Technology	C2	6	4
MS-NSBT-FS	Master of Science in Neuroscience and Biotechnology	C2		1

## Faculty of Business and Commercial Sciences

Code	Description	Cycle	Fall 2012-2013	Fall 2013-2014
LIC-GC	Bachelor in Business Administration (Fr.)	C1	1213	1106
LIC-GCA	Bachelor in Business Administration	C1	292	387
LIC-GESA-FIN	Bachelor in Business Administration - Finance	C1	2	1
LIC-GESA-MGM	Bachelor in Business Administration - Management	C1	3	1
LIC-GESA-TH	Bachelor in Business Administration - Tourism and Hotel Management	C1	6	1
LIC-GES-AUD	Bachelor of Science in Business and commercial Sciences - Audit	C1	10	1
LIC-GES-FIN	Bachelor of Science in Business and commercial Sciences - Finance	C1	28	4
LIC-GES-INGE	Bachelor of Science in Business and commercial Sciences - Business Computing	C1	3	
LIC-GES-MGMT	Bachelor of Science in Business and commercial Sciences - Management	C1	19	4
LIC-GES-MRKT	Bachelor of Science in Business and commercial Sciences - Marketing	C1	6	1
LIC-GES-TRL	Bachelor of Science in Business and commercial Sciences - Transport and Logistics	C1	10	3
LIC-GC-FIN	Bachelor of Science in Business Administration - Finance	C1		1
MBA-GC	Master in Business Administration	C2	327	366
MBA-GES-AUD	MBA in Audit	C2	1	1
MBA-GES-FIN	MBA in Finance	C2	20	5
MBA-GES-MGMT	MBA en Business Administration - management	C2	6	
MBA-GES-MRKT	MBA in Marketing	C2	4	2
MS-GC	Master of Science in Business Administration	C2	25	25
DOC-GES-FIN	PhD in Business - Finance	C3	3	2
DOC-GES-MGMT	PhD in Business - Management	C3	4	4
PHD-GES-MGMT	Ph.D. in Management	C3		1
FC-GW	Continuous Learning - George Washington	FC	11	7

## Faculty of Letters and Language Center

Code	Description	Cycle	Fall 2012-2013	Fall 2013-2014
LIC-JCM	Bachelor of Arts in Journalism and Communication	C1	66	68
LIC-LAA-AC	Bachelor of Arts in Applied Modern Languages - Business and Commerce	C1	6	3
LIC-LLA	Bachelor of Arts in English Language and Literature	C1	13	14
LIC-LLB	Bachelor of Arts in Arabic Language and Literature	C1	3	3
LIC-LLF	Bachelor of Arts in French Language and Literature	C1	11	17
LIC-LVA	Bachelor of Arts in Modern Languages and Translation	C1	122	110
DEA-LLA	Master of Arts in English Language and Literature	C2	21	11
DEA-LLB	Master of Arts in Arabic Language and Literature	C2	11	6
DEA-LLF	Master of Arts in French Language and Literature	C2	8	2
DIT-ITR-IN	Diploma in Interpretation	C2	7	6
DTR-ITR-TR	Diploma in Translation	C2	1	1
MAI-LLA	Maîtrise in English Language and Literature	C2	2	
MAI-LLF	Maîtrise in French Language and Literature	C2	4	
MA-JCM	Master of Research in Journalism and Communication	C2	12	13
MA-LAA-AC	Bachelor of Arts in Applied Modern Languages - Business and Commerce	C2	1	1
MA-LLA	Master of Arts in English Language and Literature	C2	6	13
MA-LLB	Master of Arts in Arabic Language and Literature	C2	5	8
MA-LLF	Master of Arts in French Language and Literature	C2	16	13
MA-LVA	Master of Arts in Modern Languages and Translation	C2	7	2
MA-TRD	Masters in Translation	C2	21	24
DOC-ITR	PhD in Language Sciences	C3	20	16
DOC-LLA	Ph.D. in English Language and Literature	C3	9	4
DOC-LLB	Ph.D. in Arabic Language and Literature	C3	18	13
DOC-LLF	Ph.D. in French and Literature	C3	15	8
FC-LAN	Continuous Learning - Language	FC	25	22



**Faculty of Medicine and Medical Sciences**

Code	Description	Cycle	Fall 2012-2013	Fall 2013-2014
LIC-SFS	Bachelor of Sciences in Health Fundamental Sciences	C1	9	54
MD-MED	Doctorate of Medicine	C1	212	155
MD-DESP	Diploma of Specialized Studies	C3	63	87

**Faculty of Music and School of Music**

Code	Description	Cycle	Fall 2012-2013	Fall 2013-2014
LIC-EMU	Bachelor in Musical Education	C1	1	1
LIC-MUS	Bachelor of Arts in Music (Fr)	C1	54	52
LIC-MUSA	Bachelor of Arts in Music	C1	19	23
LIC-EMS	Bachelor of Arts in Higher and Specialized Music Education (Fr)	C1		1
LIC-MUGA	Bachelor in Musicology	C1		1
MA-MUSA-MUG	Master of Arts in Music - Musicology	C2	2	
MA-MUS-EMU	Master of Arts in Music - Music Education	C2	1	
MA-MUS-MSA	Master of Arts in Music - Sacred Music	C2	1	
MA-MUS-MUG	Master of Arts in Music - Musicology (Fr.)	C2	8	1
MA-MUS	Research Master in Music (Fr)	C2		13
MA-MUSA	Master of Arts in Music (English)	C2		3
DOC-MUS-MSA	Ph.D. in Music - Sacred Music	C3		1
DOC-MUS-EMU	Ph.D. in Music - Musical Education	C3	4	2
DOC-MUS-ETM	Ph.D. in Music - Ethnomusicology	C3	1	1
DOC-MUS-MUG	Ph.D. in Music - Musicology	C3	8	4
FC-MUS	Continuous Learning - Music	FC	342	336

**Faculty of Philosophy and Humanities**

Code	Description	Cycle	Fall 2012-2013	Fall 2013-2014
LIC-PHL	Bachelor of Arts in Philosophy	C1	3	4
LIC-PSY	Bachelor of Arts in Psychology	C1	62	69
LIC-SCO	Bachelor of Arts in Social Sciences	C1	9	3
LIC-SED	Bachelor of Arts in Education Sciences (Fr)	C1	63	64
DE-SCO	Teaching diploma in Social Sciences	C1		1
DE-SED	Teaching Diploma in Education Sciences	C1	10	17
DEA-PHL	Master in Philosophy	C2	1	
MA-CUPD	International Master of University Cooperation for Peace and Developmen	C2	9	8
MA-PHL	Master in Philosophy	C2	3	2
MA-PSY-PSYC	Master of Arts in Psychology - Clinical Psychology	C2	30	30
MA-SED-ADME	Master of Arts in Education - Education Administration	C2	47	33
MA-SED-EPDF	Master of Arts in Education - Basic Education	C2	16	11
MA-SED-TED	Master of Arts in Education - Technology of Education	C2	13	11
MA-SED	Master of Arts in Education	C2		55
DOC-PHI	Ph.D. in Philosophy	C3	4	2
DOC-PSY	Ph.D. in Psychology	C3	8	6
DOC-SCO	Ph.D. in Social Sciences	C3	9	6
DOC-SED	Ph.D. in Education Sciences	C3	17	18

**Faculty of Agricultural and Food Sciences**

Code	Description	Cycle	Fall 2012-2013	Fall 2013-2014
DI-SAG	Diploma of Agricultural Engineering	C1	121	141
LIC-NHD	Bachelor in Human Nutrition and Dietetics (Fr)	C1	170	175
LIC-NHDA	Bachelor in Human Nutrition and Dietetics	C1	17	25
LIC-SGA	Bachelor of Science in Agri-Food Sciences	C1	39	31
LIC-ING-SA	Bachelor of Science in Engineering Sciences – Food Engineering	C1		12
MS-BVB	Master in Plants Biodiversity and Biotechnologies	C2	3	
MS-NTR-CL	Master in Clinical Nutrition	C2	25	19
MS-NTR-GSA	Master of Science in Food Service Management	C2	21	27
MS-NTR-NSP	Master in Nutrition and Public Health	C2	26	17
MS-SA-SGA	Master of Science in Quality Control of Agri- Food Services	C2	29	25
MS-ENO	Master of Science in Enology	C2		1
MS-GAA	Master of Science in Food Engineering	C2		7
FC-NHD	Continuous Learning - Human Nutrition and Dietetics	FC	8	13

**Faculty of Religious and Oriental Studies**

Code	Description	Cycle	Fall 2012-2013	Fall 2013-2014
LIC-ERP	Bachelor of Arts in Religious and Pastoral Education	C1		6
LIC-LTRG	Bachelor in Liturgy	C1		8
DEA-LTRG	Liturgy	C2		7
DOC-LTRG	Ph.D. in Liturgy	C3		2

**Pontifical Faculty of Theology**

Code	Description	Cycle	Fall 2012-2013	Fall 2013-2014
LIC-EPA	Bachelor in Religious and pastoral education	C1	3	1
LIC-THE	Bachelor in Theology	C1	140	129
LIC-THEB	Bachelor in Theology (Ar)	C1	31	41
DEA-THE	Master's Degree in Theology	C2	20	4
MA-THE	Master in Theology	C2		2
DOC-THE	Ph.D. in Theology	C3	6	7
FC1-THE	Continuous Learning - Theology	FC	5	2
FC-THE	Continuous Learning - Theology	FC	29	24

**Institute of History**

Code	Description	Cycle	Fall 2012-2013	Fall 2013-2014
LIC-HIS	Bachelor of Arts in History	C1	1	4
LENS-HIS	Teaching Diploma in History	C1	2	
MA-AHA	Master in Archeology and History	C2	1	1
MA-HIS	Master of Arts in History	C2	3	2
DEA-AHA	Master in Archeology and History	C2	1	
DEA-HIS	Master in History	C2	1	
DOC-AHA	Ph.D. in Archeology and Art History	C3	3	4
DOC-HIS	Ph.D. in History	C3	8	7

**Institute of Liturgy**

Code	Description	Cycle	Fall 2012-2013	Fall 2013-2014
DEA-LIT	Master in Liturgy	C2	5	
DOC-LIT	Ph.D. in Liturgy	C3	3	
LIC-LIT	Bachelor of Arts in Liturgy	C1	10	

**Higher Institute of Nursing Sciences**

Code	Description	Cycle	Fall 2012-2013	Fall 2013-2014
LIC-SIN	Bachelor of Sciences in Nursing Sciences	C1	20	23

**Higher Institute of Political and Administrative Sciences**

Code	Description	Cycle	Fall 2012-2013	Fall 2013-2014
LIC-APL	Bachelor in Public Administration	C1	3	
LIC-RIN	Bachelor in International relations	C1	31	40
LIC-SPL	Bachelor in Political Sciences	C1	9	12
MA-SPL	Master in Political Sciences	C2	13	14

## By Program and Campus – Fall 2013-2014

### RUC Zahleh

Code	Description	Cycle	Fall 2012-2013	Fall 2013-2014
DES-AGR	Master in Graphic Design	C1	21	4
DES-ARC	Master in Architecture	C1	122	121
DES-ARI	Master in Interior Design	C1	45	4
DES-PUB	Master in Advertising	C1	3	
DI-GIT-FI	Computer and Telecommunication Engineering	C1	2	
LIC-AGR	Bachelor in Graphic Design	C1		16
LIC-DAA	Bachelor in Design and Applied Arts	C1		56
LIC-PUB	Bachelor of Arts in Advertising	C1		1
LIC-DRT	Degree in Law	C1	10	17
LIC-ING	Bachelor of Science in Engineering Sciences	C1	45	69
LIC-BCH-FS	Bachelor of Science in Biochemistry (Fr)	C1	6	8
LIC-ELE-FS	Bachelor of Science in Electronics	C1	1	
LIC-INFA-FS	Bachelor of Science in Computer Science	C1	7	7
LIC-INTA-FS	Bachelor of Science in Information Technology	C1	1	1
LIC-GC	Bachelor in Business Administration (Fr.)	C1	110	102
LIC-GCA	Bachelor in Business Administration	C1		1
LIC-GES-FIN	Bachelor of Science in Business and commercial Sciences - Finance	C1	1	1
LIC-GES-MGMT	Bachelor of Science in Business and commercial Sciences - Management	C1	1	
LIC-GES-MRKT	Bachelor of Science in Business and commercial Sciences - Marketing	C1	1	
LIC-NHD	Bachelor in Human Nutrition and Dietetics (Fr)	C1	31	33
MA-SED	Master of Arts in Education	C2		24
FC-NHD	Continuous Learning - Human Nutrition and Dietetics	FC		6
FC-LAN	Continuous Learning - Language	FC	3	

**RUC Chekka**

Code	Description	Cycle	Fall 2012-2013	Fall 2013-2014
DES-AGR	Master in Graphic Design	C1	8	1
DES-ARC	Master in Architecture	C1	109	108
DES-ARI	Master in Interior Design	C1	33	
LIC-AGR	Bachelor in Graphic Design	C1		2
LIC-DAA	Bachelor in Design and Applied Arts	C1		29
LIC-GC	Bachelor in Business Administration (Fr.)	C1	122	115
LIC-GCA	Bachelor in Business Administration	C1	5	1
LIC-GES-AUD	Bachelor of Science in Business and commercial Sciences - Audit	C1	3	
LIC-GES-FIN	Bachelor of Science in Business and commercial Sciences - Finance	C1	4	1
LIC-GES-MGMT	Bachelor of Science in Business and commercial Sciences - Management	C1	3	
LIC-GES-TRL	Bachelor of Science in Business and commercial Sciences - Transport and Logistics	C1	1	
FC-LAN	Continuous Learning - Language	FC	1	

**RUC Rmeich**

Code	Description	Cycle	Fall 2012-2013	Fall 2013-2014
LIC-INFA-FS	Bachelor of Science in Computer Science	C1	25	15
LIC-GC	Bachelor in Business Administration (Fr.)	C1	93	86
LIC-GCA	Bachelor in Business Administration	C1	3	3
LIC-GES-MGMT	Bachelor of Science in Business and commercial Sciences - Management	C1	1	1

## Main Campus – Kaslik

## Faculty of Fine and Applied Arts

Code	Description	Cycle	Fall 2012-2013	Fall 2013-2014
LIC-AGR	Bachelor in Graphic Design	C1		91
LIC-ARS	Bachelor of Arts in Sacred Art	C1	6	6
LIC-AVS	Bachelor of Arts in Visual and Performing Arts	C1	288	279
LIC-DAA	Bachelor in Design and Applied Arts	C1		427
LIC-PUB	Bachelor of Arts in Advertising	C1		47
DES-AGR	Master in Graphic Design	C1	133	40
DES-ARC	Master in Architecture	C1	1015	1117
DES-ARI	Master in Interior Design	C1	482	99
DES-PUB	Master in Advertising	C1	60	18
MA-ARI	Master in Interior Design	C2		35
MS-ARS	Master of Arts in Sacred Art	C2	9	13
MS-ASC	Master in Performing Arts	C2	7	7
MS-AV-AVM	Master in Visual Arts - Audiovisual, Multimedia	C2	7	5
MS-AV-CIN	Master in Visual Arts - Cinema	C2	15	13
MS-AV-PHO	Master in Visual Arts - Photography	C2	2	3
MS-AV-TV	Master in Visual Arts - Television	C2	3	2
DOC-ARS	Ph.D. in Sacred Art	C3	1	1
DOC-AVS-CT	Ph.D. in Cinema and Television	C3	6	7
DOC-AVS-THEA	Ph.D. in Theater	C3	3	1

## Faculty of Law

Code	Description	Cycle	Fall 2012-2013	Nb. Of Students
LIC-DRT	Degree in Law	C1	165	181
LIC-DRTA	Law (English section)	C1	18	25
MA-DRT	Master in Law	C2		7
MPAM-DRT	Professional Master – Law of Arbitration and Mediation in international affairs	C2	6	2
MPBF-DRT	Professional Master – Law of banking and finance	C2	3	1
MPCI-DRT	Professional Master – Law of international contracts	C2	15	4
DEA-DRT	Master in Law	C2	56	31
DOC-DRT	Ph.D. in Law	C3	5	3

**Faculty of Engineering**

Code	Description	Cycle	Fall 2012-2013	Nb. Of Students
DI-GIT-FI	Computer and Communication Engineering	C1	48	15
LIC-ING	Bachelor of Sciences in Engineering Sciences	C1	458	568
MG-BMD	Master in Biomedical Engineering	C2	6	10
MG-CHM	Master in Chemical Engineering	C2	3	3
MG-ELE	Master in Electrical and Electronic Engineering	C2	5	9
MG-INF	Master in Computer Engineering	C2	1	5
MG-MEC	Master in Mechanical Engineering	C2	15	25
MG-TEL	Master in Telecom Engineering	C2	7	30

**Faculty of Sciences**

Code	Description	Cycle	Fall 2012-2013	Nb. Of Students
LIC-BCHA-FS	Bachelor of Science in Biochemistry	C1	1	3
LIC-BCH-FS	Bachelor of Science in Biochemistry (Fr)	C1	93	91
LIC-CHM-FS	Bachelor of Science in Chemistry	C1	13	12
LIC-ELE-FS	Bachelor of Science in Electronics	C1	7	2
LIC-INFA-FS	Bachelor of Science in Computer Science	C1	52	57
LIC-INTA-FS	Bachelor of Science in Information Technology	C1	40	38
LIC-MAF-FS	Bachelor of Science in Actuarial and Financial Mathematics	C1	3	15
LIC-MAS-FS	Bachelor of Science in Actuarial and Financial Mathematics	C1	25	19
LIC-MAT-FS	Bachelor of Science in Mathematics	C1	2	3
LIC-SVT-FS	Bachelor of Sciences in Life and Earth Sciences	C1	22	32
MS-BCHA-FS	Master of Science in Biochemistry	C2	4	7
MS-BCH-FS	Master of Science in Biochemistry (Fr)	C2	75	67
MS-CHM-FS	Master of Science in Chemistry	C2	32	21
MS-INFA-FS	Master of Science in Computer Science	C2	11	9
MS-MAF-FS	Master of Science in Actuarial and Financial Mathematics	C2	1	8
MS-MAS-FS	Master of Science in Actuarial and Financial Mathematics	C2	11	7
MS-MAT-FS	Master of Science in Mathematics	C2	15	9
MS-MMA-FS	MS in math modeling & Application	C2	5	
MS-MTR-FS	Master in Mechatronics	C2	1	
MS-SVTA-FS	Master in Life and Earth Sc.	C2	4	
MS-NSBT-FS	Master of Science in Neuroscience and Biotechnology	C2		1
MS-SVT-FS	Master of Science in Life and Earth Sciences	C2	28	25
MS-TINA-FS	Master of Science in Information Technology	C2	6	4



## Faculty of Business and Commercial Sciences

Code	Description	Cycle	Fall 2012-2013	Nb. Of Students
LIC-GC	Bachelor in Business Administration (Fr.)	C1	888	803
LIC-GCA	Bachelor in Business Administration	C1	284	382
LIC-GC-FIN	Bachelor of Science in Business Administration - Finance	C1		1
LIC-GESA-FIN	Bachelor in Business Administration - Finance	C1	2	1
LIC-GESA-MGM	Bachelor in Business Administration - Management	C1	3	1
LIC-GESA-TH	Bachelor in Business Administration - Tourism and Hotel Management	C1	6	1
LIC-GES-AUD	Bachelor of Science in Business and commercial Sciences - Audit	C1	7	1
LIC-GES-FIN	Bachelor of Science in Business and commercial Sciences - Finance	C1	23	2
LIC-GES-INGE	Bachelor of Science in Business and commercial Sciences - Business Computing	C1	3	
LIC-GES-MGMT	Bachelor of Science in Business and commercial Sciences - Management	C1	14	3
LIC-GES-MRKT	Bachelor of Science in Business and commercial Sciences - Marketing	C1	5	1
LIC-GES-TRL	Bachelor of Science in Business and commercial Sciences - Transport and Logistics	C1	9	3
MBA-GC	Master in Business Administration	C2	327	366
MBA-GES-AUD	MBA in Audit	C2	1	1
MBA-GES-FIN	MBA in Finance	C2	20	5
MBA-GES-MGMT	MBA en Business Administration - Management	C2	6	
MBA-GES-MRKT	MBA in Marketing	C2	4	2
MS-GC	Master of Science in Business Administration	C2	25	25
PHD-GES-MGMT	Ph.D. in Management	C3		1
DOC-GES-FIN	PhD in Business - Finance	C3	3	2
DOC-GES-MGMT	PhD in Business - Management	C3	4	4
FC-GW	Continuous Learning - George Washington	FC	11	7

## Faculty of Letters and Language Center

Code	Description	Cycle	Fall 2012-2013	Nb. Of Students
LIC-JCM	Bachelor of Arts in Journalism and Communication	C1	66	68
LIC-LAA-AC	Bachelor of Arts in Applied Modern Languages - Business and Commerce	C1	6	3
LIC-LLA	Bachelor of Arts in English Language and Literature	C1	13	14
LIC-LLB	Bachelor of Arts in Arabic Language and Literature	C1	3	3
LIC-LLF	Bachelor of Arts in French Language and Literature	C1	11	17
LIC-LVA	Bachelor of Arts in Modern Languages and Translation	C1	122	110
DEA-LLA	Master of Arts in English Language and Literature	C2	21	11
DEA-LLB	Master of Arts in Arabic Language and Literature	C2	11	6
DEA-LLF	Master of Arts in French Language and Literature	C2	8	2
DIT-ITR-IN	Diploma in Interpretation	C2	7	6
DTR-ITR-TR	Diploma in Translation	C2	1	1
MAI-LLA	Maîtrise in English Language and Literature	C2	2	
MAI-LLF	Maîtrise in French Language and Literature	C2	4	
MA-JCM	Master of Research in Journalism and Communication	C2	12	13
MA-LAA-AC	Bachelor of Arts in Applied Modern Languages - Business and Commerce	C2	1	1
MA-LLA	Master of Arts in English Language and Literature	C2	6	13
MA-LLB	Master of Arts in Arabic Language and Literature	C2	5	8
MA-LLF	Master of Arts in French Language and Literature	C2	16	13
MA-LVA	Master of Arts in Modern Languages and Translation	C2	7	2
MA-TRD	Masters in Translation	C2	21	24
DOC-ITR	PhD in Language Sciences	C3	20	16
DOC-LLA	Ph.D. in English Language and Literature	C3	9	4
DOC-LLB	Ph.D. in Arabic Language and Literature	C3	18	13
DOC-LLF	Ph.D. in French and Literature	C3	15	8
FC-LAN	Continuous Learning - Language	FC	21	22

**Faculty of Medicine and Medical Sciences**

Code	Description	Cycle	Fall 2012-2013	Nb. Of Students
LIC-SFS	Bachelor of Sciences in Health Fundamental Sciences	C1	9	54
MD-MED	Doctorate of Medicine	C1	212	155
MD-DESP	Diploma of Specialized Studies	C3	63	87

**Faculty of Music and School of Music**

Code	Description	Cycle	Fall 2012-2013	Nb. Of Students
LIC-EMS	Bachelor of Arts in Higher and Specialized Music Education (Fr)	C1		1
LIC-EMU	Bachelor in Musical Education	C1	1	1
LIC-MUGA	Bachelor in Musicology	C1		1
LIC-MUS	Bachelor of Arts in Music (Fr)	C1	54	52
LIC-MUSA	Bachelor of Arts in Music	C1	19	23
MA-MUS	Research Master in Music (Fr)	C2		13
MA-MUSA	Master of Arts in English Music	C2		3
MA-MUS-MUG	Master of Arts in Music - Musicology (Fr.)	C2	8	1
MA-MUSA-MUG	Master of Arts in Music - Musicology	C2	2	
MA-MUS-EMU	Master of Arts in Music - Music Education	C2	1	
MA-MUS-MSA	Master of Arts in Music - Sacred Music	C2	1	
DOC-MUS-EMU	Ph.D. in Music - Musical Education	C3	4	2
DOC-MUS-ETM	Ph.D. in Music - Ethnomusicology	C3	1	1
DOC-MUS-MSA	Ph.D. in Music - Sacred Music	C3		1
DOC-MUS-MUG	Ph.D. in Music - Musicology	C3	8	4
FC-MUS	Continuous Learning - Music	FC	342	336

**Faculty of Philosophy and Humanities**

Code	Description	Cycle	Fall 2012-2013	Nb. Of Students
DE-SCO	Teaching diploma in Social Sciences	C1		1
DE-SED	Teaching Diploma in Education	C1	10	17
LIC-PHL	Bachelor of Arts in Philosophy	C1	3	4
LIC-PSY	Bachelor of Arts in Psychology	C1	62	69
LIC-SCO	Bachelor of Arts in Social Sciences	C1	9	3
LIC-SED	Bachelor of Arts in Education (Fr)	C1	63	64
DEA-PHL	Master in Philosophy	C2	1	
MA-CUPD	International Master of University Cooperation for Peace and Developmen	C2	9	8
MA-PHL	Master in Philosophy	C2	3	2
MA-PSY-PSYC	Master of Arts in Psychology - Clinical Psychology	C2	30	30
MA-SED	Master of Arts in Education	C2		31
MA-SED-ADME	Master of Arts in Education - Education Administration	C2	47	33
MA-SED-EPDF	Master of Arts in Education - Basic Education	C2	16	11
MA-SED-TED	Master of Arts in Education - Technology of Education	C2	13	11
DOC-PHI	Ph.D. in Philosophy	C3	4	2
DOC-PSY	Ph.D. in Psychology	C3	8	6
DOC-SCO	Ph.D. in Social Sciences	C3	9	6
DOC-SED	Ph.D. in Education	C3	17	18

**Faculty of Agricultural and Food Sciences**

Code	Description	Cycle	Fall 2012-2013	Nb. Of Students
DI-SAG	Diploma of Agricultural Engineering	C1	121	141
LIC-ING-SA	Bachelor of Science in Engineering Sciences – Food Engineering	C1		12
LIC-NHD	Bachelor in Human Nutrition and Dietetics (Fr)	C1	139	142
LIC-NHDA	Bachelor in Human Nutrition and Dietetics	C1	17	25
LIC-SGA	Bachelor of Science in Agri-Food Sciences	C1	39	31
MS-BVB	Master in Plants Biodiversity and Biotechnologies	C2	3	
MS-ENO	Master of Science in Enology	C2		1
MS-GAA	Master of Science in Food Engineering	C2		7
MS-NTR-CL	Master in Clinical Nutrition	C2	25	19
MS-NTR-GSA	Master of Science in Food Service Management	C2	21	27
MS-NTR-NSP	Master in Nutrition and Public Health	C2	26	17
MS-SA-SGA	Master of Science in Quality Control of Agri-Food Services	C2	29	25
FC-NHD	Continuous Learning - Human Nutrition and Dietetics	FC	8	7

**Faculty of Religious and Oriental Studies**

Code	Description	Cycle	Fall 2012-2013	Nb. Of Students
LIC-ERP	Bachelor of Arts in Religious and Pastoral Education	C1		6
LIC-LTRG	Bachelor in Liturgy	C1		8
DEA-LTRG	Liturgy	C2		7
DOC-LTRG	Bachelor in Liturgy	C3		2

**Pontifical Faculty of Theology**

Code	Description	Cycle	Fall 2012-2013	Nb. Of Students
LIC-EPA	Bachelor in Religious and pastoral education	C1	3	1
LIC-THE	Bachelor in Theology	C1	140	129
LIC-THEB	Bachelor in Theology (Ar)	C1	31	41
MA-THE	Master in Theology	C2		2
DEA-THE	Master in Theology	C2	20	4
DOC-THE	Ph.D. in Theology	C3	6	7
FC1-THE	Continuous Learning - Theology	FC	5	2
FC-THE	Continuous Learning - Theology	FC	29	24

**Institute of History**

Code	Description	Cycle	Fall 2012-2013	Nb. Of Students
LIC-HIS	Bachelor of Arts in History	C1	1	4
DEA-AHA	Master in Archeology and History	C2	1	
DEA-HIS	Master in History	C2	1	
LENS-HIS	Teaching Diploma in History	C1	2	
MA-AHA	Master in Archeology and History	C2	1	1
MA-HIS	Master of Arts in History	C2	3	2
DOC-AHA	Ph.D. in Archeology and Art History	C3	3	4
DOC-HIS	Ph.D. in History	C3	8	7

**Institute of Liturgy**

Code	Description	Cycle	Fall 2012-2013	Fall 2013-2014
LIC-LIT	Bachelor of Arts in Liturgy	C1	10	
DEA-LIT	Master in Liturgy	C2	5	
DOC-LIT	Ph.D. in Liturgy	C3	3	

**Higher Institute of Nursing Sciences**

Code	Description	Cycle	Fall 2012-2013	Nb. Of Students
LIC-SIN	Bachelor of Sciences in Nursing Sciences	C1	20	23

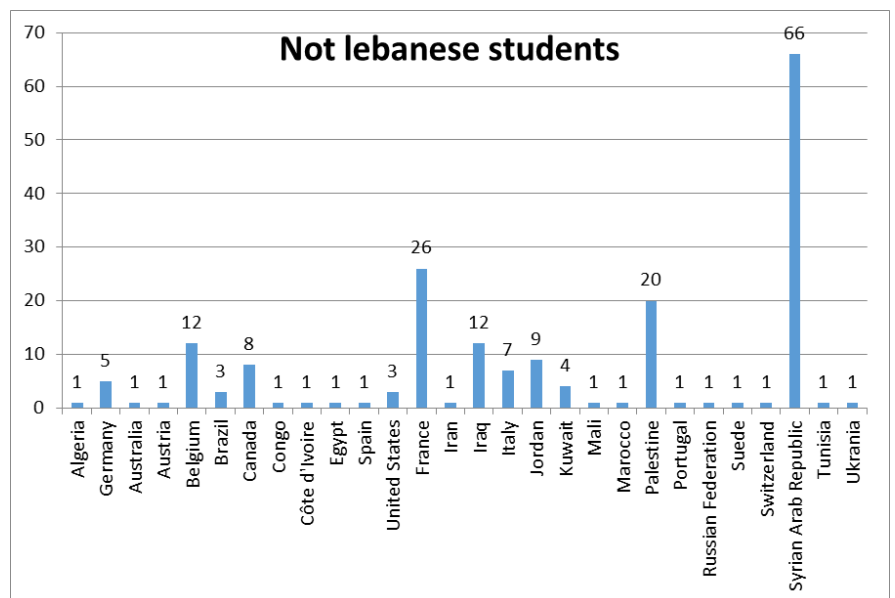
**Higher Institute of Political and Administrative Sciences**

Code	Description	Cycle	Fall 2012-2013	Nb. Of Students
LIC-RIN	Bachelor in International relations	C1	31	40
LIC-SPL	Bachelor in Political Sciences	C1	9	12
LIC-APL	Bachelor in Public Administration	C1	3	
MA-SPL	Master in Political Sciences	C2	13	14

## By Nationality

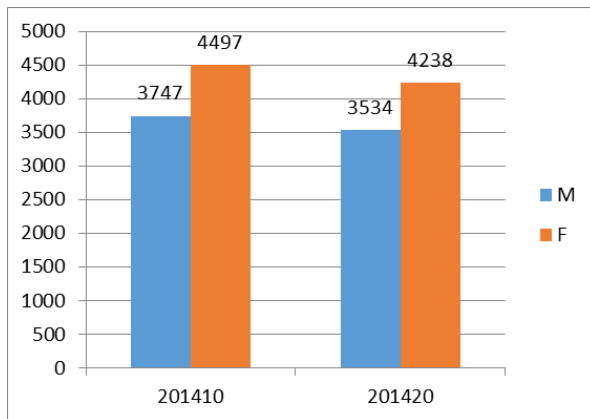
- Lebanese students: 97.40 %
- Not Lebanese students: 2.34 %
- Nationality not declared: 0.25%

Not Lebanese Students	201410
Algeria	1
Germany	5
Australia	1
Austria	1
Belgium	12
Brazil	3
Canada	8
Congo	1
Côte d'Ivoire	1
Egypt	1
Spain	1
United States	3
France	26
Iran	1
Iraq	12
Italy	7
Jordan	9
Kuwait	4
Mali	1
Marocco	1
Palestine	20
Portugal	1
Russian Federation	1
Suede	1
Switzerland	1
Syrian Arab Republic	66
Tunisia	1
Ukrania	1
<b>Total</b>	<b>191</b>



## By Gender

	201410		201420	
	Nb.	Ratio	Nb.	Ratio
Male	3746	45%	3534	45%
Female	4497	55%	4238	55%
<b>Total</b>	<b>8243</b>	<b>100%</b>	<b>7772</b>	<b>100%</b>





## Applications and Admissions

### USEK Open Doors - 2014

- 2468 school students participated in USEK Open Doors 2014
- 48 schools from different regions of Lebanon participated in the event

### Applications and Admissions by Academic Unit

Unit	Fall 2013-2014			Spring 2013-2014		
	Nb of Applicants	Accepted Applicants	%	Nb of Applicants	Accepted Applicants	%
Faculty of Fine and Applied Arts	1199	967	81%	107	85	79%
Faculty of Law	143	98	69%	29	20	69%
Faculty of Engineering	969	673	69%	97	52	54%
Faculty of Sciences	381	335	88%	42	33	79%
Faculty of Business and Commercial Sciences	1181	888	75%	223	148	66%
Faculty of Letters	170	106	62%	38	25	66%
Faculty of Medicine and Medical Sciences	287	63	22%			
Faculty of Music	40	29	73%	10	9	90%
Faculty of Philosophy and Humanities	162	131	81%	37	28	76%
Faculty of Agricultural and Food Sciences	294	260	88%	43	34	55%
Faculty of Religious and Oriental Studies	7	7	100%	3	1	33%
Pontifical Faculty of Theology	52	49	94%	10	9	90%
Institute of History	9	8	89%			
Higher Institute of Nursing Sciences	15	15	100%	1	1	100%
Higher Institute of Political and Administrative Sciences	59	55	93%	12	10	83%
<b>Total</b>	<b>4968</b>	<b>3684</b>	<b>74%</b>	<b>4968</b>	<b>3684</b>	<b>70%</b>

### Applications and Admissions by Cycle

Cycle	Fall 2013-2014			Spring 2013-2014		
	Nb of Applicants	Accepted Applicants	%	Nb of Applicants	Accepted Applicants	%
C1	4325	3237	75%	379	276	73%
C2	524	410	78%	271	177	65%
C3	119	37	31%	2	2	100%
<b>Total</b>	<b>4968</b>	<b>3684</b>	<b>74%</b>	<b>652</b>	<b>455</b>	<b>70%</b>

## Applications and Admissions by Program – Fall 2013-2014

### Faculty of Fine and Applied Arts

Program Name	Cycle	Nb of Applicants	Accepted Applicants	%
Bachelor of Arts in Visual and Performing Arts	C1	187	168	90%
Master in Architecture	C1	1	0	0%
Bachelor in Architecture	C1	519	366	71%
Bachelor of Arts in Sacred Art	C1	5	4	80%
Bachelor in Graphic Design	C1	45	38	84%
Bachelor in Design and Applied Arts	C1	307	275	90%
Bachelor of Arts in Advertising	C1	19	14	74%
Master of Arts in Sacred Art	C2	4	4	100%
Master in Performing Arts	C2	1	1	100%
Master in Visual Arts - Audiovisual et Multimedia	C2	2	1	50%
Master in Visual Arts - Cinema	C2	4	4	100%
Master in Visual Arts - Photography	C2	1	1	100%
Master in Visual Arts -Television	C2	1	1	100%
Master in Interior Design	C2	37	35	95%
Master in Graphic Design	C2	2	1	50%
Master in Advertising	C2	1	1	100%

### Faculty of Law

Program Name	Cycle	Nb of Applicants	Accepted Applicants	%
Degree in Law (English section)	C1	16	10	63%
Degree in Law (French Section)	C1	115	80	70%
Master in Law	C2	8	8	100%
Professional Master – Law of international contracts	C2	3	0	0%
Ph.D. in Law	C3	1	0	0%

### Faculty of Engineering

Program Name	Cycle	Nb of Applicants	Accepted Applicants	%
Bachelor of Sciences in Engineering Sciences	C1	934	638	68%
Master in Biomedical Engineering	C2	6	6	100%
Master in Telecom Engineering	C2	13	13	100%
Master in Electrical and Electronic Engineering	C2	4	4	100%
Master in Computer Engineering	C2	5	5	100%
Master in Mechanical Engineering	C2	7	7	100%

**Faculty of Sciences**

Program Name	Cycle	Nb of Applicants	Accepted Applicants	%
Bachelor in Biochemistry (EN)	C1	6	6	100%
BS in Computer Science	C1	24	20	83%
BS in Information Technology	C1	12	5	42%
BS in Computer Science (FR)	C1	32	31	97%
Bachelor in Biochemistry (FR)	C1	123	104	85%
Bachelor of Sciences in Chemistry	C1	17	16	94%
Bachelor of Science in Actuarial and Financial Mathematics	C1	28	27	96%
BS in Actuarial Mathematics and Statistics	C1	1	1	100%
Bachelor in Applied Physics	C1	9	9	100%
Bachelor of Sciences in Life and Earth Sciences	C1	54	53	98%
BS in Information Technology (FR)	C1	15	15	100%
Master of Science in Biochemistry (FR)	C2	24	18	75%
Master of Science in Chemistry (FR)	C2	4	4	100%
Master of Science in Mathematics	C2	2	2	100%
Master of Science in Actuarial and Financial Mathematics	C2	2	2	100%
Master in Life and Earth Sciences	C2	17	14	82%
Master of Science in Biochemistry	C2	2	1	50%
Master of Science in Chemistry	C2	1	0	0%
Master in Computer Sciences	C2	4	3	75%
Neuroscience and Biotechnology	C2	4	4	100%

**Faculty of Business and Commercial Sciences**

Program Name	Cycle	Nb of Applicants	Accepted Applicants	%
Bachelor in Business Administration	C1	507	325	64%
Bachelor in Business Administration (Fr.)	C1	437	409	94%
Master of Science in Business Administration	C2	31	11	35%
Master in Business Administration	C2	196	143	73%
PhD in Business - Audit	C3	1	0	0%
PhD in Business - Finance	C3	4	0	0%
PhD in Business - Management	C3	2	0	0%
PhD in Business - Marketing	C3	3	0	0%

**Faculty of Letters and Language Center**

Program Name	Cycle	Nb of Applicants	Accepted Applicants	%
Bachelor of Arts in Journalism and Communication	C1	35	18	51%
Bachelor of Arts in English Language and Literature	C1	11	3	27%
Bachelor of Arts in Arabic Language and Literature	C1	3	3	100%
Bachelor of Arts in French Language and Literature	C1	13	11	85%
Bachelor of Arts in Modern Languages and Translation	C1	75	45	60%
Diploma in Interpretation	C2	5	3	60%
Master of Research in Journalism and Communication	C2	1	1	100%
Bachelor of Arts in Applied Modern Languages - Business and Commerce	C2	2	1	50%
Master of Arts in English Language and Literature	C2	5	4	80%
Master of Arts in French Language and Literature	C2	2	2	100%
Master of Arts in Translation	C2	14	14	100%
Ph.D. in English Language and Literature	C3	2	0	0%
Ph.D. in Arabic Language and Literature	C3	1	1	100%
PhD in Language Sciences	C3	1	0	0%

**Faculty of Medicine and Medical Sciences**

Program Name	Cycle	Nb of Applicants	Accepted Applicants	%
Doctorate of Medicine	C1	2	0	0%
Bachelor of Sciences in Health Fundamental Sciences	C1	193	32	17%
Diploma of Specialized Studies	C3	92	31	34%

**Faculty of Music and School of Music**

Program Name	Cycle	Nb of Applicants	Accepted Applicants	%
Bachelor in Musical Education	C1	2	1	50%
Bachelor of Arts in Music (Fr)	C1	18	17	94%
Bachelor of Arts in Music	C1	10	8	80%
Research Master in Musical Education	C2	1	0	0%
Master of Arts in Music (English)	C2	1	1	100%
Master of Arts in Music	C2	4	2	50%
Ph.D. in Music	C3	3	0	0%
Ph.D. in Music - Musicology	C3	1	0	0%

**Faculty of Philosophy and Humanities**

Program Name	Cycle	Nb of Applicants	Accepted Applicants	%
Teaching diploma in Philosophy	C1	2	0	0%
Teaching diploma in Social Sciences	C1	3	1	33%
Teaching Diploma in Education Sciences	C1	19	13	68%
Bachelor of Arts in Philosophy	C1	5	4	80%
Bachelor of Arts in Psychology	C1	54	53	98%
Bachelor of Arts in Education Sciences	C1	32	21	66%
Bachelor of Arts in Social Sciences	C1	1	1	100%
Master in Philosophy	C2	1	1	100%
Master of Arts in Psychology - Clinical Psychology	C2	9	9	100%
Master of Arts in Social Sciences	C2	1	0	0%
Master of Arts in Education Sciences	C2	31	26	84%
Ph.D. in Psychology	C3	2	0	0%
Ph.D. in Education Sciences	C3	2	2	100%

**Faculty of Agricultural and Food Sciences**

Program Name	Cycle	Nb of Applicants	Accepted Applicants	%
Bachelor in Human Nutrition and Dietetics	C1	11	10	91%
Diploma of Agricultural Engineering	C1	69	59	86%
Bachelor in Agri-Business	C1	3	1	33%
Bachelor in Human Nutrition and Dietetics (FR)	C1	128	122	95%
Bachelor of Science in Agri-Food Sciences	C1	5	3	60%
Agricultural Engineering Sciences	C1	30	25	83%
Bachelor of Science in Engineering Sciences – Food Engineering	C2	9	7	78%
Master in Nutrition	C2	27	25	93%
Master of Science in Enology	C2	3	3	100%
Master of Science in Food Engineering	C2	9	5	56%

**Faculty of Religious and Oriental Studies**

Program Name	Cycle	Nb of Applicants	Accepted Applicants	%
Bachelor of Arts in Religious and Pastoral Education	C1	3	3	100%
Bachelor in Liturgy	C1	1	1	100%
Liturgy	C2	3	3	100%

**Pontifical Faculty of Theology**

Program Name	Cycle	Nb of Applicants	Accepted Applicants	%
Bachelor in Theology	C1	33	30	91%
Bachelor in Theology (Ar)	C1	17	17	100%
Ph.D. in Theology	C3	2	2	100%

**Institute of History**

Program Name	Cycle	Nb of Applicants	Accepted Applicants	%
Bachelor of Arts in History	C1	5	5	100%
Master of Arts in History	C2	2	2	100%
Ph.D. in History	C3	2	1	50%

**Higher Institute of Nursing Sciences**

Program Name	Cycle	Nb of Applicants	Accepted Applicants	%
Bachelor of Sciences in Nursing Sciences	C1	15	15	100%

**Higher Institute of Political and Administrative Sciences**

Program Name	Cycle	Nb of Applicants	Accepted Applicants	%
Bachelor in Public Administration	C1	2	2	100%
Bachelor in International relations	C1	29	27	93%
Bachelor in Political Sciences	C1	20	19	95%
Master in Political Sciences	C2	8	7	88%

## New Students

### By Academic Unit – Fall 2013-2014

Academic Unit	New Students	Total Nb. Of Students	Ratio*
Faculty of Fine and Applied Arts	553	2553	22%
Faculty of Law	67	271	25%
Faculty of Engineering	255	734	35%
Faculty of Sciences	131	459	29%
Faculty of Business and Commercial Sciences	403	1923	21%
Faculty of Letters	70	356	20%
Faculty of Medicine and Medical Sciences	51	296	17%
Faculty of Music	21	103	20%
Faculty of Philosophy and Humanities	58	340	17%
Faculty of Agricultural and Food Sciences	138	493	28%
Faculty of Religious and Oriental Studies	7	23	30%
Pontifical Faculty of Theology	41	184	22%
Institute of History	6	18	33%
Higher Institute of Nursing Sciences	7	23	30%
Higher Institute of Political and Administrative Sciences	17	66	26%
Language Center	19	22	86%
School of Music	51	336	15%
School of Theology	5	26	19%
Other	8	17	47%
<b>Total</b>	<b>1907</b>	<b>8243</b>	<b>23%</b>

\*ratio of new students compared to nb. Of students in the academic unit

### By Cycle – Fall 2013-2014

Cycle	New Students	Total Nb. Of Students	Ratio*
Cycle I	1495	6474	23%
Cycle II	282	1155	24%
Cycle III	37	210	18%
Continuous Learning	94	404	23%
<b>Total</b>	<b>1908</b>	<b>8243</b>	<b>23%</b>

\*ratio of new students compared to nb. Of students in the corresponding cycle

### By Campus & RUC – Fall 2013-2014

Campus/RUC	New Students	Total nb. of Students	Ratio
Campus Kaslik	1702	7410	23%
RUC Zahleh	132	471	28%
RUC Chekka	52	257	20%
RUC Rmeich	22	105	21%
<b>Total</b>	<b>1908</b>	<b>8243</b>	<b>23%</b>

**By Program – Fall 2013-2014****Faculty of Fine and Applied Arts**

Code	Description	Cycle	New Students	Total Nb. Of Students	Ratio
LIC-AGR	Bachelor in Graphic Design	C1	21	109	19%
LIC-ARS	Bachelor of Arts in Sacred Art	C1	2	6	33%
LIC-AVS	Bachelor of Arts in Visual and Performing Arts	C1	60	279	22%
LIC-DAA	Bachelor in Design and Applied Arts	C1	157	512	31%
LIC-PUB	Bachelor of Arts in Advertising	C1	7	48	15%
DES-AGR	Master in Graphic Design	C1		45	0%
DES-ARC	Master in Architecture	C1	265	1346	20%
DES-ARI	Master in Interior Design	C1		103	0%
DES-PUB	Master in Advertising	C1		18	0%
MA-ARI	Master in Interior Design	C2	33	35	94%
MS-ARS	Master of Arts in Sacred Art	C2	3	13	23%
MS-ASC	Master in Performing Arts	C2	1	7	14%
MS-AV-AVM	Master in Visual Arts - Audiovisual, Multimedia	C2	1	5	20%
MS-AV-CIN	Master in Visual Arts - Cinema	C2	2	13	15%
MS-AV-PHO	Master in Visual Arts - Photography	C2	1	3	33%
MS-AV-TV	Master in Visual Arts - Television	C2		2	0%
DOC-ARS	Ph.D. in Sacred Art	C3		1	0%
DOC-AVS-CT	Ph.D. in Cinema and Television	C3		7	0%
DOC-AVS-THEA	Ph.D. in Theater	C3		1	0%

**Faculty of Law**

Code	Description	Cycle	New Students	Total Nb. Of Students	Ratio
LIC-DRT	Degree in Law	C1	55	198	28%
LIC-DRTA	Law (English section)	C1	6	25	24%
DEA-DRT	Master in Law	C2		31	0%
MA-DRT	Master in Law	C2	6	7	86%
MPAM-DRT	Professional Master – Law of Arbitration and Mediation in international affairs	C2		2	0%
MPBF-DRT	Professional Master – Law of banking and finance	C2		1	0%
MPCI-DRT	Professional Master – Law of international contracts	C2		4	0%
DOC-DRT	Ph.D. in Law	C3		3	0%



## Faculty of Engineering

Code	Description	Cycle	New Students	Total Nb. Of Students	Ratio
DI-GIT-FI	Computer and Communication Engineering	C1		15	0%
LIC-ING	Bachelor of Sciences in Engineering Sciences	C1	221	637	35%
MG-BMD	Master in Biomedical Engineering	C2	6	10	60%
MG-CHM	Master in Chemical Engineering	C2		3	0%
MG-ELE	Master in Electrical and Electronic Engineering	C2	4	9	44%
MG-INF	Master in Computer Engineering	C2	4	5	80%
MG-MEC	Master in Mechanical Engineering	C2	7	25	28%
MG-TEL	Master in Telecom Engineering	C2	13	30	43%

## Faculty of Sciences

Code	Description	Cycle	New Students	Total Nb. Of Students	Ratio
LIC-BCHA-FS	Bachelor of Science in Biochemistry	C1	2	3	67%
LIC-BCH-FS	Bachelor of Science in Biochemistry (Fr)	C1	40	99	40%
LIC-CHM-FS	Bachelor of Science in Chemistry	C1	3	12	25%
LIC-ELE-FS	Bachelor of Science in Electronics	C1		2	0%
LIC-INFA-FS	Bachelor of Science in Computer Science	C1	24	79	30%
LIC-INTA-FS	Bachelor of Science in Information Technology	C1	7	37	19%
LIC-MAF-FS	Bachelor of Science in Actuarial and Financial Mathematics	C1	10	15	67%
LIC-MAS-FS	Bachelor of Science in Actuarial and Financial Mathematics	C1		19	0%
LIC-MAT-FS	Bachelor of Science in Mathematics	C1		3	0%
LIC-SVT-FS	Bachelor of Science in Life and Earth Sciences	C1	13	32	41%
MS-BCHA-FS	Master of Science in Biochemistry	C2	1	7	14%
MS-BCH-FS	Master of Science in Biochemistry (Fr)	C2	15	67	22%
MS-CHM-FS	Master of Science in Chemistry	C2	2	21	10%
MS-INFA-FS	Master of Science in Computer Science	C2	2	9	22%
MS-MAF-FS	Master of Science in Actuarial and Financial Mathematics	C2	1	8	13%
MS-MAS-FS	Master of Science in Actuarial and Financial Mathematics	C2		7	0%
MS-MAT-FS	Master of Science in Mathematics	C2	1	9	11%
MS-NSBT-FS	Master of Science in Neuroscience and Biotechnology	C2	1	1	100%
MS-SVT-FS	Master of Science in Life and Earth Sciences	C2	9	25	36%
MS-TINA-FS	Master of Science in Information Technology	C2		4	0%

## Faculty of Business and Commercial Sciences

Code	Description	Cycle	New Students	Total Nb. Of Students	Ratio
LIC-GC	Bachelor in Business Administration (Fr.)	C1	180	1106	16%
LIC-GCA	Bachelor in Business Administration	C1	120	387	31%
LIC-GC-FIN	Bachelor of Science in Business Administration - Finance	C1		1	0%
LIC-GESA-FIN	Bachelor in Business Administration - Finance	C1		1	0%
LIC-GESA-MGM	Bachelor in Business Administration - Management	C1		1	0%
LIC-GESA-TH	Bachelor in Business Administration - Tourism and Hotel Management	C1		1	0%
LIC-GES-AUD	Bachelor of Science in Business and commercial Sciences - Audit	C1		1	0%
LIC-GES-FIN	Bachelor of Science in Business and commercial Sciences - Finance	C1		4	0%
LIC-GES-MGMT	Bachelor of Science in Business and commercial Sciences - Management	C1		4	0%
LIC-GES-MRKT	Bachelor of Science in Business and commercial Sciences - Marketing	C1		1	0%
LIC-GES-TRL	Bachelor of Science in Business and commercial Sciences - Transport and Logistics	C1		3	0%
MBA-GC	Master in Business Administration	C2	90	366	25%
MBA-GES-AUD	MBA in Audit	C2		1	0%
MBA-GES-FIN	MBA in Finance	C2		5	0%
MBA-GES-MRKT	MBA in Marketing	C2		2	0%
MS-GC	Master of Science in Business Administration	C2	7	25	28%
PHD-GES-MGMT	Ph.D. in Management	C3		1	0%
DOC-GES-FIN	PhD in Business - Finance	C3		2	0%
DOC-GES-MGMT	PhD in Business - Management	C3		4	0%
FC-GW	Continuous Learning - George Washington	FC	6	7	86%

## Faculty of Letters and Language Center

Code	Description	Cycle	New Students	Total Nb. Of Students	Ratio
LIC-JCM	Bachelor of Arts in Journalism and Communication	C1	9	68	13%
LIC-LAA-AC	Bachelor of Arts in Applied Modern Languages - Business and Commerce	C1		3	0%
LIC-LLA	Bachelor of Arts in English Language and Literature	C1	2	14	14%
LIC-LLB	Bachelor of Arts in Arabic Language and Literature	C1	1	3	33%
LIC-LLF	Bachelor of Arts in French Language and Literature	C1	5	17	29%
LIC-LVA	Bachelor of Arts in Modern Languages and Translation	C1	30	110	27%
DEA-LLB	Master of Arts in Arabic Language and Literature	C2		6	0%
DEA-LLF	Master of Arts in French Language and Literature	C2		2	0%
DIT-ITR-IN	Diploma in Interpretation	C2	3	6	50%
DTR-ITR-TR	Diploma in Translation	C2		1	0%
MA-JCM	Master of Research in Journalism and Communication	C2	1	13	8%
MA-LAA-AC	Bachelor of Arts in Applied Modern Languages - Business and Commerce	C2		1	0%
MA-LLA	Master of Arts in English Language and Literature	C2	3	13	23%
MA-LLB	Master of Arts in Arabic Language and Literature	C2		8	0%
MA-LLF	Master of Arts in French Language and Literature	C2	1	13	8%
MA-LVA	Master of Arts in Modern Languages and Translation	C2		2	0%
MA-TRD	Masters in Translation	C2	13	24	54%
DOC-ITR	PhD in Language Sciences	C3	1	16	6%
DOC-LLA	Ph.D. in English Language and Literature	C3		4	0%
DOC-LLB	Ph.D. in Arabic Language and Literature	C3	1	13	8%
DOC-LLF	Ph.D. in French and Literature	C3		8	0%
FC-LAN	Continuous Learning - Language	FC	19	22	86%

**Faculty of Medicine and Medical Sciences**

Code	Description	Cycle	New Students	Total Nb. Of Students	Ratio
LIC-SFS	Bachelor of Sciences in Health Fundamental Sciences	C1	23	54	43%
MD-MED	Doctorate of Medicine	C1		155	0%
MD-DESP	Diploma of Specialized Studies	C3	28	87	32%

**Faculty of Music and School of Music**

Code	Description	Cycle	New Students	Total Nb. Of Students	Ratio
LIC-EMS	Bachelor of Arts in Higher and Specialized Music Education (Fr)	C1	1	1	100%
LIC-EMU	Bachelor in Musical Education	C1		1	0%
LIC-MUGA	Bachelor in Musicology	C1		1	0%
LIC-MUS	Bachelor of Arts in Music (Fr)	C1	10	52	19%
LIC-MUSA	Bachelor of Arts in Music	C1	8	23	35%
MA-MUS	Research Master in Music (Fr)	C2	1	13	8%
MA-MUSA	Master of Arts in English Music	C2	1	3	33%
MA-MUS-MUG	Master of Arts in Music - Musicology	C2		1	0%
DOC-MUS-EMU	Ph.D. in Music - Musical Education	C3		2	0%
DOC-MUS-ETM	Ph.D. in Music - Ethnomusicology	C3		1	0%
DOC-MUS-MSA	Ph.D. in Music - Sacred Music	C3		1	0%
DOC-MUS-MUG	Ph.D. in Music - Musicology	C3		4	0%
FC-MUS	Continuous Learning - Music	FC	51	336	15%

**Faculty of Philosophy and Humanities**

Code	Description	Cycle	New Students	Total Nb. Of Students	Ratio
DE-SCO	Teaching diploma in Social Sciences	C1		1	0%
DE-SED	Teaching Diploma in Education	C1	1	17	6%
LIC-PHL	Bachelor of Arts in Philosophy	C1		4	0%
LIC-PSY	Bachelor of Arts in Psychology	C1	19	69	28%
LIC-SCO	Bachelor of Arts in Social Sciences	C1		3	0%
LIC-SED	Bachelor of Arts in Education (Fr)	C1	12	64	19%
MA-CUPD	International Master of University Cooperation for Peace and Development	C2		8	0%
MA-PHL	Master in Philosophy	C2		2	0%
MA-PSY-PSYC	Master of Arts in Psychology - Clinical Psychology	C2	9	30	30%
MA-SED	Master of Arts in Education	C2	15	55	27%
MA-SED-ADME	Master of Arts in Education - Education Administration	C2		33	0%
MA-SED-EPDF	Master of Arts in Education - Basic Education	C2		11	0%
MA-SED-TED	Master of Arts in Education - Technology of Education	C2		11	0%
DOC-PHI	Ph.D. in Philosophy	C3		2	0%
DOC-PSY	Ph.D. in Psychology	C3		6	0%
DOC-SCO	Ph.D. in Social Sciences	C3		6	0%
DOC-SED	Ph.D. in Education	C3	2	18	11%

**Faculty of Agricultural and Food Sciences**

Code	Description	Cycle	New Students	Total Nb. Of Students	Ratio
DI-SAG	Diploma of Agricultural Engineering	C1	36	141	26%
LIC-ING-SA	Bachelor of Science in Engineering Sciences – Food Engineering	C1	10	12	83%
LIC-NHD	Bachelor in Human Nutrition and Dietetics (Fr)	C1	52	175	30%
LIC-NHDA	Bachelor in Human Nutrition and Dietetics	C1	7	25	28%
LIC-SGA	Bachelor of Science in Agri-Food Sciences	C1	1	31	3%
MS-ENO	Master of Science in Enology	C2		1	0%
MS-GAA	Master of Science in Food Engineering	C2	7	7	100%
MS-NTR-CL	Master in Clinical Nutrition	C2	2	19	11%
MS-NTR-GSA	Master of Science in Food Service Management	C2	4	27	15%
MS-NTR-NSP	Master in Nutrition and Public Health	C2	5	17	29%
MS-SA-SGA	Master of Science in Quality Control of Agri-Food Services	C2	1	25	4%
FC-NHD	Continuous Learning - Human Nutrition and Dietetics	FC	13	13	100%

**Faculty of Religious and Oriental Studies**

Code	Description	Cycle	New Students	Total Nb. Of Students	Ratio
LIC-ERP	Bachelor of Arts in Religious and Pastoral Education	C1	4	6	67%
LIC-LTRG	Bachelor in Liturgy	C1		8	0%
DEA-LTRG	Liturgy	C2	3	7	43%
DOC-LTRG	Bachelor in Liturgy	C3		2	0%

**Pontifical Faculty of Theology**

Code	Description	Cycle	New Students	Total Nb. Of Students	Ratio
LIC-EPA	Bachelor in Religious and pastoral education	C1		1	0%
LIC-THE	Bachelor in Theology	C1	24	129	19%
LIC-THEB	Bachelor in Theology (Ar)	C1	15	41	37%
MA-THE	Master in Theology	C2		2	0%
DEA-THE	Master's Degree in Theology	C2		4	0%
DOC-THE	Ph.D. in Théologie	C3	2	7	29%
FC1-THE	Continuous Learning - Theology	FC		2	0%
FC-THE	Continuous Learning - Theology	FC	5	24	21%

**Institute of History**

Code	Description	Cycle	New Students	Total Nb. Of Students	Ratio
LIC-HIS	Bachelor of Arts in History	C1	3	4	75%
MA-AHA	Master in Archeology and History	C2		1	0%
MA-HIS	Master of Arts in History	C2	1	2	50%
DOC-AHA	Ph.D. in Archeology and Art History	C3		4	0%
DOC-HIS	Ph.D. in History	C3	2	7	29%

**Higher Institute of Nursing Sciences**

Code	Description	Cycle	New Students	Total Nb. Of Students	Ratio
LIC-SIN	Bachelor of Sciences in Nursing Sciences	C1	7	23	30%

**Higher Institute of Political and Administrative Sciences**

Code	Description	Cycle	New Students	Total Nb. Of Students	Ratio
LIC-RIN	Bachelor in International relations	C1	12	40	30%
LIC-SPL	Bachelor in Political Sciences	C1	3	12	25%
MA-SPL	Master in Political Sciences	C2	2	14	14%

**By Program and Campus – Fall 2013-2014****RUC Zahleh**

Code	Description	Cycle	New Students	Total Nb. Of Students	Ratio
LIC-AGR	Bachelor in Graphic Design	C1	1	16	6%
LIC-DAA	Bachelor in Design and Applied Arts	C1	19	56	34%
LIC-PUB	Bachelor of Arts in Advertising	C1		1	0%
LIC-DRT	Degree in Law	C1	7	17	41%
LIC-ING	Bachelor of Science in Engineering Sciences	C1	35	69	51%
LIC-BCH-FS	Bachelor of Science in Biochemistry (Fr)	C1	6	8	75%
LIC-INFA-FS	Bachelor of Science in Computer Science	C1	1	7	14%
LIC-TIN-FS	Bachelor of Science in Information Technology (Fr.)	C1		1	0%
LIC-GC	Bachelor in Business Administration (Fr.)	C1	24	102	24%
LIC-GCA	Bachelor in Business Administration	C1	1	1	100%
LIC-GES-FIN	Bachelor of Science in Business and commercial Sciences - Finance	C1		1	0%
LIC-NHD	Bachelor in Human Nutrition and Dietetics (Fr)	C1	10	33	30%
DES-AGR	Master in Graphic Design	C1		4	0%
DES-ARC	Master in Architecture	C1	17	121	14%
DES-ARI	Master in Interior Design	C1		4	0%
MA-SED	Master of Arts in Education	C2	5	24	21%
FC-NHD	Continuous Learning - Human Nutrition and Dietetics	FC	6	6	100%

**RUC Chekka**

Code	Description	Cycle	New Students	Total Nb. Of Students	Ratio
DES-AGR	Master in Graphic Design	C1		1	0%
DES-ARC	Master in Architecture	C1	17	108	16%
LIC-AGR	Bachelor in Graphic Design	C1	2	2	100%
LIC-DAA	Bachelor in Design and Applied Arts	C1	8	29	28%
LIC-GC	Bachelor in Business Administration (Fr.)	C1	25	115	22%
LIC-GCA	Bachelor in Business Administration	C1		1	0%
LIC-GES-FIN	Bachelor of Science in Business and commercial Sciences - Finance	C1		1	0%



**RUC Rmeich**

Code	Description	Cycle	New Students	Total Nb. Of Students	Ratio
LIC-INF-FS	Bachelor of Science in Computer Science	C1	5	15	33%
LIC-GC	Bachelor in Business Administration (Fr.)	C1	15	86	17%
LIC-GCA	Bachelor in Business Administration	C1	2	3	67%
LIC-GES-MGMT	Bachelor of Science in Business and commercial Sciences - Management	C1		1	0%

**Main Campus – Kaslik****Faculty of Fine and Applied Arts**

Code	Description	Cycle	New Students	Total Nb. Of Students	Ratio
LIC-AGR	Bachelor in Graphic Design	C1	18	91	20%
LIC-ARS	Bachelor of Arts in Sacred Art	C1	2	6	33%
LIC-AVS	Bachelor of Arts in Visual and Performing Arts	C1	60	279	22%
LIC-DAA	Bachelor in Design and Applied Arts	C1	130	427	30%
LIC-PUB	Bachelor of Arts in Advertising	C1	7	47	15%
DES-AGR	Master in Graphic Design	C1		40	0%
DES-ARC	Master in Architecture	C1	231	1117	21%
DES-ARI	Master in Interior Design	C1		99	0%
DES-PUB	Master in Advertising	C1		18	0%
MA-ARI	Master in Interior Design	C2	33	35	94%
MS-ARS	Master of Arts in Sacred Art	C2	3	13	23%
MS-ASC	Master in Performing Arts	C2	1	7	14%
MS-AV-AVM	Master in Visual Arts - Audiovisual, Multimedia	C2	1	5	20%
MS-AV-CIN	Master in Visual Arts - Cinema	C2	2	13	15%
MS-AV-PHO	Master in Visual Arts - Photography	C2	1	3	33%
MS-AV-TV	Master in Visual Arts - Television	C2		2	0%
DOC-ARS	Ph.D. in Sacred Art	C3		1	0%
DOC-AVS-CT	Ph.D. in Cinema and Television	C3		7	0%
DOC-AVS-THEA	Ph.D. in Theater	C3		1	0%

**Faculty of Law**

Code	Description	Cycle	New Students	Total Nb. Of Students	Ratio
LIC-DRT	Degree in Law	C1	48	181	27%
LIC-DRTA	Law (English section)	C1	6	25	24%
MA-DRT	Master in Law	C2	6	7	86%
MPAM-DRT	Professional Master – Law of Arbitration and Mediation in international affairs	C2		2	0%
MPBF-DRT	Professional Master – Law of banking and finance	C2		1	0%
MPCI-DRT	Professional Master – Law of international contracts	C2		4	0%
DEA-DRT	Master in Law	C2		31	0%
DOC-DRT	Ph.D. in Law	C3		3	0%

**Faculty of Engineering**

Code	Description	Cycle	New Students	Total Nb. Of Students	Ratio
DI-GIT-FI	Computer and Communication Engineering	C1		15	0%
LIC-ING	Bachelor of Sciences in Engineering Sciences	C1	186	568	33%
MG-BMD	Master in Biomedical Engineering	C2	6	10	60%
MG-CHM	Master in Chemical Engineering	C2		3	0%
MG-ELE	Master in Electrical and Electronic Engineering	C2	4	9	44%
MG-INF	Master in Computer Engineering	C2	4	5	80%
MG-MEC	Master in Mechanical Engineering	C2	7	25	28%
MG-TEL	Master in Telecom Engineering	C2	13	30	43%

## Faculty of Sciences

Code	Description	Cycle	New Students	Total Nb. Of Students	Ratio
LIC-BCHA-FS	Bachelor of Science in Biochemistry	C1	2	3	67%
LIC-BCH-FS	Bachelor of Science in Biochemistry (Fr)	C1	34	91	37%
LIC-CHM-FS	Bachelor of Science in Chemistry	C1	3	12	25%
LIC-ELE-FS	Bachelor of Science in Electronics	C1		2	0%
LIC-INFA-FS	Bachelor of Science in Computer Science	C1	18	57	32%
LIC-INTA-FS	Bachelor of Science in Information Technology	C1	7	36	19%
LIC-MAF-FS	Bachelor of Science in Actuarial and Financial Mathematics	C1	10	15	67%
LIC-MAS-FS	Bachelor of Science in Actuarial and Financial Mathematics	C1		19	0%
LIC-MAT-FS	Bachelor of Science in Mathematics	C1		3	0%
LIC-SVT-FS	Bachelor of Science in Life and Earth Sciences	C1	13	32	41%
MS-BCHA-FS	Master of Science in Biochemistry	C2	1	7	14%
MS-BCH-FS	Master of Science in Biochemistry (Fr)	C2	15	67	22%
MS-CHM-FS	Master of Science in Chemistry	C2	2	21	10%
MS-INFA-FS	Master of Science in Computer Science	C2	2	9	22%
MS-MAF-FS	Master of Science in Actuarial and Financial Mathematics	C2	1	8	13%
MS-MAS-FS	Master of Science in Actuarial and Financial Mathematics	C2		7	0%
MS-MAT-FS	Master of Science in Mathematics	C2	1	9	11%
MS-NSBT-FS	Master of Science in Neuroscience and Biotechnology	C2	1	1	100%
MS-SVT-FS	Master of Science in Life and Earth Sciences	C2	9	25	36%
MS-TINA-FS	Master of Science in in Information Technology	C2		4	0%

## Faculty of Business and Commercial Sciences

Code	Description	Cycle	New Students	Total Nb. Of Students	Ratio
LIC-GC	Bachelor in Business Administration (Fr.)	C1	116	803	14%
LIC-GCA	Bachelor in Business Administration	C1	117	382	31%
LIC-GC-FIN	Bachelor of Science in Business Administration - Finance	C1		1	0%
LIC-GESA-FIN	Bachelor in Business Administration - Finance	C1		1	0%
LIC-GESA-MGM	Bachelor in Business Administration - Management	C1		1	0%
LIC-GESA-TH	Bachelor in Business Administration - Tourism and Hotel Management	C1		1	0%
LIC-GES-AUD	Bachelor of Science in Business and commercial Sciences - Audit	C1		1	0%
LIC-GES-FIN	Bachelor of Science in Business and commercial Sciences - Finance	C1		2	0%
LIC-GES-MGMT	Bachelor of Science in Business and commercial Sciences - Management	C1		3	0%
LIC-GES-MRKT	Bachelor of Science in Business and commercial Sciences - Marketing	C1		1	0%
LIC-GES-TRL	Bachelor of Science in Business and commercial Sciences - Transport and Logistics	C1		3	0%
MBA-GC	Master in Business Administration	C2	90	366	25%
MBA-GES-AUD	MBA in Audit	C2		1	0%
MBA-GES-FIN	MBA in Finance	C2		5	0%
MBA-GES-MRKT	MBA in Marketing	C2		2	0%
MS-GC	Master of Science in Business Administration	C2	7	25	28%
PHD-GES-MGMT	Ph.D. in Management	C3		1	0%
DOC-GES-FIN	PhD in Business - Finance	C3		2	0%
DOC-GES-MGMT	PhD in Business - Management	C3		4	0%
FC-GW	Continuous Learning - George Washington	FC	6	7	86%

## Faculty of Letters and Language Center

Code	Description	Cycle	New Students	Total Nb. Of Students	Ratio
LIC-JCM	Bachelor of Arts in Journalism and Communication	C1	9	68	13%
LIC-LAA-AC	Bachelor of Arts in Applied Modern Languages - Business and Commerce	C1		3	0%
LIC-LLA	Bachelor of Arts in English Language and Literature	C1	2	14	14%
LIC-LLB	Bachelor of Arts in Arabic Language and Literature	C1	1	3	33%
LIC-LLF	Bachelor of Arts in French Language and Literature	C1	5	17	29%
LIC-LVA	Bachelor of Arts in Modern Languages and Translation	C1	30	110	27%
DEA-LLA	Master of Arts in English Language and Literature	C2		11	0%
DEA-LLB	Master of Arts in Arabic Language and Literature	C2		6	0%
DEA-LLF	Master of Arts in French Language and Literature	C2		2	0%
DIT-ITR-IN	Diploma in Interpretation	C2	3	6	50%
DTR-ITR-TR	Diploma in Translation	C2		1	0%
MA-JCM	Master of Research in Journalism and Communication	C2	1	13	8%
MA-LAA-AC	Bachelor of Arts in Applied Modern Languages - Business and Commerce	C2		1	0%
MA-LLA	Master of Arts in English Language and Literature	C2	3	13	23%
MA-LLB	Master of Arts in Arabic Language and Literature	C2		8	0%
MA-LLF	Master of Arts in French Language and Literature	C2	1	13	8%
MA-LVA	Master of Arts in Modern Languages and Translation	C2		2	0%
MA-TRD	Masters in Translation	C2	13	24	54%
DOC-ITR	PhD in Language Sciences	C3	1	16	6%
DOC-LLA	Ph.D. in English Language and Literature	C3		4	0%
DOC-LLB	Ph.D. in Arabic Language and Literature	C3	1	13	8%
DOC-LLF	Ph.D. in French and Literature	C3		8	0%
FC-LAN	Continuous Learning - Language	FC	19	22	86%

**Faculty of Medicine and Medical Sciences**

Code	Description	Cycle	New Students	Total Nb. Of Students	Ratio
LIC-SFS	Bachelor of Sciences in Health Fundamental Sciences	C1	23	54	43%
MD-DESP	Diploma of Specialized Studies	C3	28	87	32%
MD-MED	Doctorate of Medicine	C1		155	0%

**Faculty of Music and School of Music**

Code	Description	Cycle	New Students	Total Nb. Of Students	Ratio
LIC-EMS	Bachelor of Arts in Higher and Specialized Music Education (Fr)	C1	1	1	100%
LIC-EMU	Bachelor in Musical Education	C1		1	0%
LIC-MUGA	Bachelor in Musicology	C1		1	0%
LIC-MUS	Bachelor of Arts in Music (Fr)	C1	10	52	19%
LIC-MUSA	Bachelor of Arts in Music	C1	8	23	35%
MA-MUS	Research Master in Music (Fr)	C2	1	13	8%
MA-MUSA	Master of Arts in English Music	C2	1	3	33%
MA-MUS-MUG	Master of Arts in Music - Musicology	C2		1	0%
DOC-MUS-EMU	Ph.D. in Music - Musical Education	C3		2	0%
DOC-MUS-ETM	Ph.D. in Music - Ethnomusicology	C3		1	0%
DOC-MUS-MSA	Ph.D. in Music - Sacred Music	C3		1	0%
DOC-MUS-MUG	Ph.D. in Music - Musicology	C3		4	0%
FC-MUS	Continuous Learning - Music	FC	51	336	15%

**Faculty of Philosophy and Humanities**

Code	Description	Cycle	New Students	Total Nb. Of Students	Ratio
DE-SCO	Teaching diploma in Social Sciences	C1		1	0%
DE-SED	Teaching Diploma in Education	C1	1	17	6%
LIC-PHL	Bachelor of Arts in Philosophy	C1		4	0%
LIC-PSY	Bachelor of Arts in Psychology	C1	19	69	28%
LIC-SCO	Bachelor of Arts in Social Sciences	C1		3	0%
LIC-SED	Bachelor of Arts in Education (Fr)	C1	12	64	19%
MA-CUPD	International Master of University Cooperation for Peace and Developmen	C2		8	0%
MA-PHL	Master in Philosophy	C2		2	0%
MA-PSY-PSYC	Master of Arts in Psychology - Clinical Psychology	C2	9	30	30%
MA-SED	Master of Arts in Education	C2	10	31	32%
MA-SED-ADME	Master of Arts in Education - Education Administration	C2		33	0%
MA-SED-EPDF	Master of Arts in Education - Basic Education	C2		11	0%
MA-SED-TED	Master of Arts in Education - Technology of Education	C2		11	0%
DOC-PHI	Ph.D. in Philosophy	C3		2	0%
DOC-PSY	Ph.D. in Psychology	C3		6	0%
DOC-SCO	Ph.D. in Social Sciences	C3		6	0%
DOC-SED	Ph.D. in Education	C3	2	18	11%

**Faculty of Agricultural and Food Sciences**

Code	Description	Cycle	New Students	Total Nb. Of Students	Ratio
DI-SAG	Diploma of Agricultural Engineering	C1	36	141	26%
LIC-ING-SA	Bachelor of Science in Engineering Sciences – Food Engineering	C1	10	12	83%
LIC-NHD	Bachelor in Human Nutrition and Dietetics (Fr)	C1	42	142	30%
LIC-NHDA	Bachelor in Human Nutrition and Dietetics	C1	7	25	28%
LIC-SGA	Bachelor of Science in Agri-Food Sciences	C1	1	31	3%
MS-ENO	Master of Science in Enology	C2		1	0%
MS-GAA	Master of Science in Food Engineering	C2	7	7	100%
MS-NTR-CL	Master in Clinical Nutrition	C2	2	19	11%
MS-NTR-GSA	Master of Science in Food Service Management	C2	4	27	15%
MS-NTR-NSP	Master in Nutrition and Public Health	C2	5	17	29%
MS-SA-SGA	Master of Science in Quality Control of Agri-Food Services	C2	1	25	4%
FC-NHD	Continuous Learning - Human Nutrition and Dietetics	FC	7	7	100%

**Faculty of Religious and Oriental Studies**

Code	Description	Cycle	New Students	Total Nb. Of Students	Ratio
LIC-ERP	Bachelor of Arts in Religious and Pastoral Education	C1	4	6	67%
LIC-LTRG	Bachelor in Liturgy	C1		8	0%
DEA-LTRG	Liturgy	C2	3	7	43%
DOC-LTRG	Bachelor in Liturgy	C3		2	0%

**Pontifical Faculty of Theology**

Code	Description	Cycle	New Students	Total Nb. Of Students	Ratio
LIC-EPA	Bachelor in Religious and pastoral education	C1		1	0%
LIC-THE	Bachelor in Theology	C1	24	129	19%
LIC-THEB	Bachelor in Theology (Ar)	C1	15	41	37%
DEA-THE	Master's Degree in Theology	C2		4	0%
MA-THE	Master in Theology	C2		2	0%
DOC-THE	Ph.D. in Théology	C3	2	7	29%
FC1-THE	Continuous Learning - Theology	FC		2	0%
FC-THE	Continuous Learning - Theology	FC	5	24	21%

**Institute of History**

Code	Description	Cycle	New Students	Total Nb. Of Students	Ratio
LIC-HIS	Bachelor of Arts in History	C1	3	4	75%
MA-AHA	Master in Archeology and History	C2		1	0%
MA-HIS	Master of Arts in History	C2	1	2	50%
DOC-AHA	Ph.D. in Archeology and Art History	C3		4	0%
DOC-HIS	Ph.D. in History	C3	2	7	29%

**Higher Institute of Nursing Sciences**

Code	Description	Cycle	New Students	Total Nb. Of Students	Ratio
LIC-SIN	Bachelor of Sciences in Nursing Sciences	C1	7	23	30%



**Higher Institute of Political and Administrative Sciences**

Code	Description	Cycle	New Students	Total Nb. Of Students	Ratio
LIC-RIN	Bachelor in International relations	C1	12	40	30%
LIC-SPL	Bachelor in Political Sciences	C1	3	12	25%
MA-SPL	Master in Political Sciences	C2	2	14	14%

## Online Registration

### By Academic Unit – Fall 2013-2014

Academic Unit	Students not registered online	Total Nb. of Students	Ratio*
Faculty of Fine and Applied Arts	240	2553	9%
Faculty of Law	39	271	14%
Faculty of Engineering	71	734	10%
Faculty of Sciences	81	459	18%
Faculty of Business and Commercial Sciences	324	1923	17%
Faculty of Letters	112	356	31%
Faculty of Medicine and Medical Sciences	24	296	8%
Faculty of Music	103	103	100%
Faculty of Philosophy and Humanities	74	340	22%
Faculty of Agricultural and Food Sciences	67	493	14%
Faculty of Religious and Oriental Studies	21	23	91%
Pontifical Faculty of Theology	53	184	29%
Institute of History	8	18	44%
Higher Institute of Nursing Sciences	4	23	17%
Higher Institute of Political and Administrative Sciences	9	66	14%
Language Center	22	22	100%
School of Music	336	336	100%
School of Theology	26	26	100%
Other	17	17	100%
<b>Total</b>	<b>1631</b>	<b>8243</b>	<b>20%</b>

\*ratio compared to nb. Of students in the corresponding unit

### By Cycle – Fall 2013-2014

Cycle	Students not registered online	Total Nb. of Students	Ratio*
Cycle I	761	6474	12%
Cycle II	365	1155	32%
Cycle III	101	210	48%
Continuous Learning	404	404	100%

\*ratio compared to nb. Of students in the corresponding cycle

### By Campus – Fall 2013-2014

Campus/RUC	Students not registered online	Total Nb. of Students	Ratio*
Campus Kaslik	1443	7410	19%
RUC Zahleh	132	471	28%
RUC Chekka	36	257	14%
RUC Rmeich	20	105	19%

\*ratio compared to nb. Of students in the corresponding Campus/RUC

### By Seniority – Fall 2013-2014

First Registration Semester	Students not registered online	Total Nb. of Students	Ratio*
201330 & before	937	6335	15%
201410 - New Students	694	1908	36%

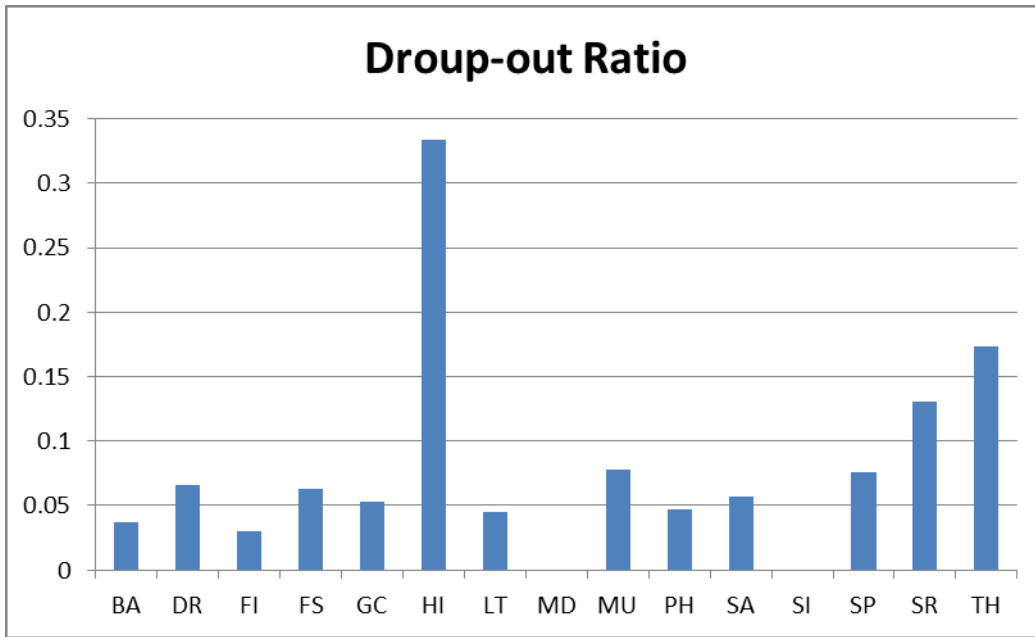
## Retention and Graduation

### Students not registered in 2013-2014 & not graduated in 2012-2013

Type of Students	Nb. of Students
Students not registered in 2013-2014 and not graduated	472
Total number of Registered Students in Cycle I, Cycle II et Cycle III	8240
<b>Drop Out Ratio</b>	<b>5.73%</b>

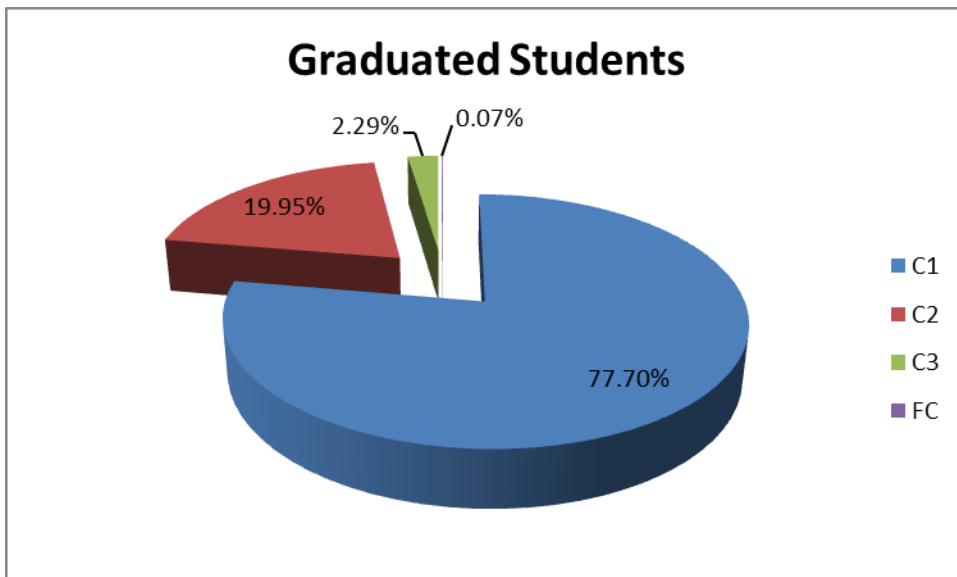
### Drop Out Ratio by Academic Unit

Academic Unit	Drop out	Average of GPA	Total Nb. Of Students	Ratio
Faculty of Fine and Applied Arts	94	68.7	2553	3.68%
Faculty of Law	18	66.7	271	6.64%
Faculty of Engineering	22	63.1	734	3.00%
Faculty of Sciences	29	64.3	459	6.32%
Faculty of Business and Commercial Sciences	102	67	1923	5.30%
Faculty of Letters	16	69.6	356	4.49%
Faculty of Medicine and Medical Sciences	0		296	0.00%
Faculty of Music	8	66.1	103	7.77%
Faculty of Philosophy and Humanities	16	66.5	340	4.71%
Faculty of Agricultural and Food Sciences	28	32.4	493	5.68%
Faculty of Religious and Oriental Studies	3	90.7	23	13.04%
Pontifical Faculty of Theology	32	76.7	184	17.39%
Institute of History	6	42.5	18	33.33%
Higher Institute of Nursing Sciences	0		23	0.00%
Higher Institute of Political and Administrative Sciences	5	67.5	66	7.58%
Languages Center	9	43.1	22	40.91%
School of Music	62	49.6	336	18.45%
School of Theology	13	76	26	50.00%
Other	9	29.6	17	52.9%
<b>Total</b>	<b>472</b>	<b>62.4</b>	<b>8243</b>	<b>5.73%</b>



### Graduated Students by Cycle - 2013-2014

Cycle	Graduated Students
C1	1188
C2	305
C3	35
FC	1
<b>Total</b>	<b>1529</b>



## Graduated Students by Academic Unit - 2013-2014

Academic Unit	Graduated Students	Re-registered*	Ratio**
Faculty of Fine and Applied Arts	401	75	19%
Faculty of Law	41	6	15%
Faculty of Engineering	110	59	54%
Faculty of Sciences	114	20	18%
Faculty of Business and Commercial Sciences	422	41	10%
Faculty of Letters	113	26	23%
Faculty of Medicine and Medical Sciences	70	50	71%
Faculty of Music	9	1	11%
Faculty of Philosophy and Humanities	103	17	17%
Faculty of Agricultural and Food Sciences	97	23	24%
Faculty of Religious and Oriental Studies	6	3	50%
Pontifical Faculty of Theology	26	5	19%
Institute of History	1		0%
Higher Institute of Nursing Sciences	3		0%
Higher Institute of Political and Administrative Sciences	12	2	17%
Languages Center	1	1	100%
<b>Total</b>	<b>1529</b>	<b>329</b>	<b>22%</b>

\*Graduates that re-registered in Fall 2014-2015

\*\*Ratio of graduates that re-registered compared to the number of graduates in a specified unit

## Graduated Students by Program – 2013-2014

### Faculty of Fine and Applied Arts

Program Code	Program	Cycle	Nb of Graduated Students
DES-AGR	Master in Graphic Design	C1	23
DES-ARC	Master in Architecture	C1	103
DES-ARI	Master in Interior Design	C1	60
DES-PUB	Master in Advertising	C1	8
LIC-AGR	Bachelor in Graphic Design	C1	27
LIC-ARC	Architectural Studies	C1	1
LIC-AVS	Bachelor of Arts in Visual and Performing Arts	C1	52
LIC-DAA	Bachelor in Design and Applied Arts	C1	96
LIC-PUB	Bachelor of Arts in Advertising	C1	16
MA-ARS	Master of Arts in Sacred Art	C2	1
MA-ASC	Master in Performing Arts	C2	2
MA-AV	Master in Visual Arts	C2	9
DOC-AVS-CT	Ph.D. in Cinema and Television	C3	3

### Faculty of Law

Program Code	Program	Cycle	Nb of Graduated Students
LIC-DRT	Degree in Law	C1	25
DEA-DRT	Master in Law	C2	13
MPCI-DRT	Professional Master – Law of international contracts	C2	3

### Faculty of Engineering

Program Code	Program	Cycle	Nb of Graduated Students
DI-GIT-FI	Computer and Communication Engineering	C1	12
LIC-ING	Bachelor of Science in Engineering Sciences	C1	79
MG-BMD	Master in Biomedical Engineering	C2	2
MG-CHM	Master in Chemical Engineering	C2	3
MG-ELE	Master in Electrical and Electronic Engineering	C2	1
MG-MEC	Master in Mechanical Engineering	C2	10
MG-TEL	Master in Telecom Engineering	C2	3

**Faculty of Sciences**

Program Code	Program	Cycle	Nb of Graduated Students
LIC-BCH-FS	Bachelor of Science in Biochemistry (Fr)	C1	22
LIC-CHM-FS	Bachelor of Science in Chemistry	C1	4
LIC-ELE-FS	Bachelor of Science in Electronics	C1	2
LIC-INFA-FS	Bachelor of Science in Computer Science	C1	11
LIC-INTA-FS	Bachelor of Science in Information Technology	C1	9
LIC-MAF-FS	Bachelor of Science in Actuarial and Financial Mathematics	C1	4
LIC-SVT-FS	Bachelor of Science in Life and Earth Sciences	C1	7
MS-BCHA-FS	Master of Science in Biochemistry	C2	1
MS-BCH-FS	Master of Science in Biochemistry (Fr)	C2	23
MS-CHM-FS	Master of Science in Chemistry	C2	11
MS-INFA-FS	Master of Science in Computer Science	C2	3
MS-MAS-FS	Master of Science in Actuarial and Financial Mathematics	C2	4
MS-MAT-FS	Master of Science in Mathematics	C2	5
MS-SVT-FS	Master of Science in Life and Earth Sciences	C2	7
MS-TINA-FS	Master of Science in in Information Technology	C2	1

**Faculty of Business and Commercial Sciences**

Program Code	Program	Cycle	Nb of Graduated Students
LIC-GC	Bachelor in Business Administration (Fr.)	C1	251
LIC-GCA	Bachelor in Business Administration	C1	77
LIC-GCA-FIN	Bachelor in Business Administration - Finance	C1	1
LIC-GESA-FIN	Bachelor in Business Administration - Finance	C1	1
LIC-GESA-MGM	Bachelor in Business Administration - Management	C1	1
LIC-GES-AUD	Bachelor of Science in Business and commercial Sciences - Audit	C1	2
LIC-GES-FIN	Bachelor of Science in Business and commercial Sciences - Finance	C1	1
LIC-GES-MGMT	Bachelor of Science in Business and commercial Sciences - Management	C1	1
LIC-GES-MRKT	Bachelor of Science in Business and commercial Sciences - Marketing	C1	1
LIC-GES-TRL	Bachelor of Science in Business and commercial Sciences - Transport and Logistics	C1	2
MBA-GC	Master in Business Administration	C2	72
MBA-GES-FIN	MBA in Finance	C2	3
MS-GC	Master of Science in Business Administration	C2	6
DOC-GES-FIN	PhD in Business - Finance	C3	1
DOC-GES-MGMT	PhD in Business - Management	C3	2



**Faculty of Letters and Language Center**

Program Code	Program	Cycle	Nb of Graduated Students
LIC-JCM	Bachelor of Arts in Journalism and Communication	C1	23
LIC-LAA-AC	Bachelor of Arts in Applied Modern Languages - Business and Commerce	C1	2
LIC-LLA	Bachelor of Arts in English Language and Literature	C1	4
LIC-LLB	Bachelor of Arts in Arabic Language and Literature	C1	1
LIC-LLF	Bachelor of Arts in French Language and Literature	C1	3
LIC-LVA	Bachelor of Arts in Modern Languages and Translation	C1	35
DEA-LLA	Master of Arts in English Language and Literature	C2	6
DEA-LLB	Master of Arts in Arabic Language and Literature	C2	7
DEA-LLF	Master of Arts in French Language and Literature	C2	1
DIT-ITR-IN	Diploma in Interpretation	C2	2
DTR-ITR-TR	Diploma in Translation	C2	1
MA-JCM	Master of Research in Journalism and Communication	C2	3
MA-LAA-AC	Bachelor of Arts in Applied Modern Languages - Business and Commerce	C2	1
MA-LLA	Master of Arts in English Language and Literature	C2	3
MA-LLB	Master of Arts in Arabic Language and Literature	C2	6
MA-LLF	Master of Arts in French Language and Literature	C2	3
MA-TRD	Masters in Translation	C2	4
DOC-ITR	PhD in Language Sciences	C3	3
DOC-LLA	Ph.D. in English Language and Literature	C3	2
DOC-LLB	Ph.D. in Arabic Language and Literature	C3	3
FC-LAN	Continuous Learning - Language	FC	1

**Faculty of Medicine and Medical Sciences**

Program Code	Program	Cycle	Nb of Graduated Students
LIC-SFS	Bachelor of Sciences in Health Fundamental Sciences	C1	33
MD-MED	Doctorate of Medicine	C1	28
MD-DESP	Diploma of Specialized Studies	C3	9

**Faculty of Music**

Program Code	Program	Cycle	Nb of Graduated Students
LIC-MUS	Bachelor of Arts in Music (Fr)	C1	6
LIC-MUSA	Bachelor of Arts in Music	C1	1
MA-MUS	Research Master in Music (Fr)	C2	2

**Faculty of Philosophy and Humanities**

Program Code	Program	Cycle	Nb of Graduated Students
DE-SCO	Teaching diploma in Social Sciences	C1	1
DE-SED	Teaching Diploma in Education	C1	14
LIC-PHL	Bachelor of Arts in Philosophy	C1	3
LIC-PSY	Bachelor of Arts in Psychology	C1	10
LIC-SED	Bachelor of Arts in Education (Fr)	C1	19
MA-CUPD	International Master of University Cooperation for Peace and Development	C2	7
MA-PHL	Master in Philosophy	C2	2
MA-PSY	Master of Arts in Psychology	C2	8
MA-SED	Master of Arts in Education	C2	5
MA-SED-ADME	Master of Arts in Education - Education Administration	C2	13
MA-SED-EPDF	Master of Arts in Education - Basic Education	C2	5
MA-SED-TED	Master of Arts in Education - Technology of Education	C2	5
DOC-PSY	Ph.D. in Psychology	C3	2
DOC-SCO	Ph.D. in Social Sciences	C3	1
DOC-SED	Ph.D. in Education	C3	8

**Faculty of Agricultural and Food Sciences**

Program Code	Program	Cycle	Nb of Graduated Students
DI-SAG	Diploma of Agricultural Engineering	C1	8
LIC-ING-SA	Bachelor of Science in Engineering Sciences – Food Engineering	C1	3
LIC-NHD	Bachelor in Human Nutrition and Dietetics (Fr)	C1	46
LIC-NHDA	Bachelor in Human Nutrition and Dietetics	C1	3
LIC-SGA	Bachelor of Science in Agri-Food Sciences	C1	3
MS-NTR-CL	Master in Clinical Nutrition	C2	6
MS-NTR-GSA	Master of Science in Food Service Management	C2	7
MS-NTR-NSP	Master in Nutrition and Public Health	C2	8
MS-SA-SGA	Master of Science in Quality Control of Agri-Food Services	C2	13

**Faculty of Religious and Oriental Sciences**

Program Code	Program	Cycle	Nb of Graduated Students
LIC-ERP	Bachelor of Arts in Religious and Pastoral Education	C1	3
LIC-LTRG	Bachelor in Liturgy	C1	2
DEA-LTRG	Liturgy	C2	1

**Pontifical Faculty of Theology**

Program Code	Program	Cycle	Nb of Graduated Students
LIC-THE	Bachelor in Theology	C1	24
LIC-THEB	Bachelor in Theology (Ar)	C1	1
DEA-THE	Master's Degree in Theology	C2	1

**Institute of History**

Program Code	Program	Cycle	Nb of Graduated Students
DOC-HIS	Ph.D. in History	C3	1

**Higher Institute of Nursing Sciences**

Program Code	Program	Cycle	Nb of Graduated Students
LIC-SIN	Bachelor of Sciences in Nursing Sciences	C1	3

**Higher Institute of Political and Administrative Sciences**

Program Code	Program	Cycle	Nb of Graduated Students
LIC-RIN	Bachelor in International relations	C1	8
LIC-SPL	Bachelor in Political Sciences	C1	2
MA-SPL	Master in Political Sciences	C2	2

## Graduated Students by Campus and Program – 2013-2014

### RUC Zahleh

Program Code	Program	Cylce	Nb of Graduated Students
LIC-AGR	Bachelor in Graphic Design	C1	3
LIC-DAA	Bachelor in Design and Applied Arts	C1	9
LIC-GC	Bachelor in Business Administration (Fr.)	C1	18
LIC-NHD	Bachelor in Human Nutrition and Dietetics (Fr)	C1	8
DES-AGR	Master in Graphic Design	C1	1
DES-ARC	Master in Architecture	C1	8
DES-ARI	Master in Interior Design	C1	1

### RUC Chekka

Program Code	Program	Cylce	Nb of Graduated Students
LIC-AVS	Bachelor of Arts in Visual and Performing Arts	C1	1
LIC-GC	Bachelor in Business Administration (Fr.)	C1	23
LIC-GCA	Bachelor in Business Administration	C1	1
DES-AGR	Master in Graphic Design	C1	1
DES-ARC	Master in Architecture	C1	12

### RUC Rmeich

Program Code	Program	Cylce	Nb of Graduated Students
LIC-INF-FS	Bachelor of Science in Computer Science	C1	4
LIC-GC	Bachelor in Business Administration (Fr.)	C1	19
LIC-GCA	Bachelor in Business Administration	C1	1

**Main Campus – Kaslik****Faculty of Fine and Applied Arts**

Program Code	Program	Cylce	Nb of Graduated Students
DES-AGR	Master in Graphic Design	C1	21
DES-ARC	Master in Architecture	C1	83
DES-ARI	Master in Interior Design	C1	59
DES-PUB	Master in Advertising	C1	7
LIC-AGR	Bachelor in Graphic Design	C1	24
LIC-ARC	Architectural Studies	C1	1
LIC-AVS	Bachelor of Arts in Visual and Performing Arts	C1	51
LIC-DAA	Bachelor in Design and Applied Arts	C1	87
LIC-PUB	Bachelor of Arts in Advertising	C1	16
MA-ARS	Master of Arts in Sacred Art	C2	1
MA-ASC	Master in Performing Arts	C2	2
MA-AV	Master in Visual Arts	C2	9
DOC-AVS-CT	Ph.D. in Cinema and Television	C3	3

**Faculty of Law**

Program Code	Program	Cylce	Nb of Graduated Students
LIC-DRT	Degree in Law	C1	25
DEA-DRT	Master in Law	C2	13
MPCI-DRT	Professional Master – Law of international contracts	C2	3

**Faculty of Engineering**

Program Code	Program	Cylce	Nb of Graduated Students
DI-GIT-FI	Computer and Communication Engineering	C1	12
LIC-ING	Bachelor of Sciences in Engineering Sciences	C1	79
MG-BMD	Master in Biomedical Engineering	C2	2
MG-CHM	Master in Chemical Engineering	C2	3
MG-ELE	Master in Electrical and Electronic Engineering	C2	1
MG-MEC	Master in Mechanical Engineering	C2	10
MG-TEL	Master in Telecom Engineering	C2	3

**Faculty of Sciences**

Program Code	Program	Cylce	Nb of Graduated Students
LIC-BCH-FS	Bachelor of Science in Biochemistry (Fr)	C1	22
LIC-CHM-FS	Bachelor of Science in Chemistry	C1	4
LIC-ELE-FS	Bachelor of Science in Electronics	C1	2
LIC-INF-FS	Bachelor of Science in Computer Science (Fr.)	C1	7
LIC-INTA-FS	Bachelor of Science in Information Technology	C1	1
LIC-MAF-FS	Bachelor of Science in Actuarial and Financial Mathematics	C1	4
LIC-SVT-FS	Bachelor of Science in Life and Earth Sciences	C1	7
LIC-TIN-FS	Bachelor of Science in Information Technology (Fr.)	C1	8
MS-BCHA-FS	Master of Science in Biochemistry	C2	1
MS-BCH-FS	Master of Science in Biochemistry (Fr)	C2	23
MS-CHM-FS	Master of Science in Chemistry	C2	11
MS-INFA-FS	Master of Science in Computer Science	C2	3
MS-MAS-FS	Master of Science in Actuarial and Financial Mathematics	C2	4
MS-MAT-FS	Master of Science in Mathematics	C2	5
MS-SVT-FS	Master of Science in Life and Earth Sciences	C2	7
MS-TINA-FS	Master of Science in in Information Technology	C2	1

**Faculty of Business and Commercial Sciences**

Program Code	Program	Cylce	Nb of Graduated Students
LIC-GC	Bachelor in Business Administration (Fr.)	C1	191
LIC-GCA	Bachelor in Business Administration	C1	75
LIC-GCA-FIN	Bachelor in Business Administration - Finance	C1	1
LIC-GESA-FIN	Bachelor in Business Administration - Finance	C1	1
LIC-GESA-MGM	Bachelor in Business Administration - Management	C1	1
LIC-GES-AUD	Bachelor of Science in Business and commercial Sciences - Audit	C1	2
LIC-GES-FIN	Bachelor of Science in Business and commercial Sciences - Finance	C1	1
LIC-GES-MGMT	Bachelor of Science in Business and commercial Sciences - Management	C1	1
LIC-GES-MRKT	Bachelor of Science in Business and commercial Sciences - Marketing	C1	1
LIC-GES-TRL	Bachelor of Science in Business and commercial Sciences - Transport and Logistics	C1	2
MBA-GC	Master in Business Administration	C2	72
MBA-GES-FIN	MBA in Finance	C2	3
MS-GC	Master of Science in Business Administration	C2	6
DOC-GES-FIN	PhD in Business - Finance	C3	1
DOC-GES-MGMT	PhD in Business - Management	C3	2

**Faculty of Letters and Language Center**

Program Code	Program	Cylce	Nb of Graduated Students
LIC-JCM	Bachelor of Arts in Journalism and Communication	C1	23
LIC-LAA-AC	Bachelor of Arts in Applied Modern Languages - Business and Commerce	C1	2
LIC-LLA	Bachelor of Arts in English Language and Literature	C1	4
LIC-LLB	Bachelor of Arts in Arabic Language and Literature	C1	1
LIC-LLF	Bachelor of Arts in French Language and Literature	C1	3
LIC-LVA	Bachelor of Arts in Modern Languages and Translation	C1	35
DTR-ITR-TR	Diploma in Translation	C2	1
MA-JCM	Master of Research in Journalism and Communication	C2	3
MA-LAA-AC	Bachelor of Arts in Applied Modern Languages - Business and Commerce	C2	1
MA-LLA	Master of Arts in English Language and Literature	C2	3
MA-LLB	Master of Arts in Arabic Language and Literature	C2	6
MA-LLF	Master of Arts in French Language and Literature	C2	3
MA-TRD	Masters in Translation	C2	4
DEA-LLA	Master of Arts in English Language and Literature	C2	6
DEA-LLB	Master of Arts in Arabic Language and Literature	C2	7
DEA-LLF	Master of Arts in French Language and Literature	C2	1
DIT-ITR-IN	Diploma in Interpretation	C2	2
DOC-ITR	PhD in Language Sciences	C3	3
DOC-LLA	Ph.D. in English Language and Literature	C3	2
DOC-LLB	Ph.D. in Arabic Language and Literature	C3	3
FC-LAN	Continuous Learning - Language	FC	1

**Faculty of Medicine and Medical Sciences**

Program Code	Program	Cylce	Nb of Graduated Students
LIC-SFS	Bachelor of Sciences in Health Fundamental Sciences	C1	33
MD-MED	Doctorate of Medicine	C1	28
MD-DESP	Diploma of Specialized Studies	C3	9

**Faculty of Music**

Program Code	Program	Cylce	Nb of Graduated Students
LIC-MUS	Bachelor of Arts in Music (Fr)	C1	6
LIC-MUSA	Bachelor of Arts in Music	C1	1
MA-MUS	Research Master in Music (Fr)	C2	2

**Faculty of Philosophy and Humanities**

Program Code	Program	Cylce	Nb of Graduated Students
DE-SCO	Teaching diploma in Social Sciences	C1	1
DE-SED	Teaching Diploma in Education	C1	14
LIC-PHL	Bachelor of Arts in Philosophy	C1	3
LIC-PSY	Bachelor of Arts in Psychology	C1	10
LIC-SED	Bachelor of Arts in Education (Fr)	C1	19
MA-CUPD	International Master of University Cooperation for Peace and Developmen	C2	7
MA-PHL	Master in Philosophy	C2	2
MA-PSY	Master of Arts in Psychology	C2	8
MA-SED	Master of Arts in Education	C2	5
MA-SED-ADME	Master of Arts in Education - Education Administration	C2	13
MA-SED-EPDF	Master of Arts in Education - Basic Education	C2	5
MA-SED-TED	Master of Arts in Education - Technology of Education	C2	5
DOC-PSY	Ph.D. in Psychology	C3	2
DOC-SCO	Ph.D. in Social Sciences	C3	1
DOC-SED	Ph.D. in Education	C3	8

**Faculty of Agricultural and Food Sciences**

Program Code	Program	Cylce	Nb of Graduated Students
DI-SAG	Diploma of Agricultural Engineering	C1	8
LIC-ING-SA	Bachelor of Science in Engineering Sciences – Food Engineering	C1	3
LIC-NHD	Bachelor in Human Nutrition and Dietetics (Fr)	C1	38
LIC-NHDA	Bachelor in Human Nutrition and Dietetics	C1	3
LIC-SGA	Bachelor of Science in Agri-Food Sciences	C1	3
MS-NTR-CL	Master in Clinical Nutrition	C2	6
MS-NTR-GSA	Master of Science in Food Service Management	C2	7
MS-NTR-NSP	Master in Nutrition and Public Health	C2	8
MS-SA-SGA	Master of Science in Quality Control of Agri-Food Services	C2	13



**Faculty of Religious and Oriental Sciences**

Program Code	Program	Cylce	Nb of Graduated Students
LIC-ERP	Bachelor of Arts in Religious and Pastoral Education	C1	3
LIC-LTRG	Bachelor in Liturgy	C1	2
DEA-LTRG	Liturgy	C2	1

**Pontifical Faculty of Theology**

Program Code	Program	Cylce	Nb of Graduated Students
LIC-THE	Bachelor in Theology	C1	24
LIC-THEB	Bachelor in Theology (Ar)	C1	1
DEA-THE	Master's Degree in Theology	C2	1

**Institute of History**

Program Code	Program	Cylce	Nb of Graduated Students
DOC-HIS	Ph.D. in History	C3	1

**Higher Institute of Nursing Sciences**

Program Code	Program	Cylce	Nb of Graduated Students
LIC-SIN	Bachelor of Sciences in Nursing Sciences	C1	3

**Higher Institute of Political and Administrative Sciences**

Program Code	Program	Cylce	Nb of Graduated Students
LIC-RIN	Bachelor in International relations	C1	8
LIC-SPL	Bachelor in Political Sciences	C1	2
MA-SPL	Master in Political Sciences	C2	2

## Time to Graduate by Program – 2013-2014

### Faculty of Fine and Applied Arts

Program Code	Program	Cycle	Nb of Graduated Students	Average Nb of Years
LIC-AGR	Bachelor in Graphic Design	C1	27	3.94
LIC-ARC	Bachelor in Architecture	C1	1	4.00
LIC-AVS	Bachelor of Arts in Visual and Performing Arts	C1	52	4.39
LIC-DAA	Bachelor in Design and Applied Arts	C1	96	4.09
LIC-PUB	Bachelor of Arts in Advertising	C1	16	4.00
DES-AGR	Master in Graphic Design	C1	23	5.67
DES-ARC	Master in Architecture	C1	103	6.28
DES-ARI	Master in Interior Design	C1	60	6.08
DES-PUB	Master in Advertising	C1	8	5.50
MA-ARS	Master of Arts in Sacred Art	C2	1	4.50
MA-ASC	Master in Performing Arts	C2	2	2.25
MA-AV	Master in Visual Arts	C2	9	2.39
DOC-AVS-CT	Ph.D. in Cinema and Television	C3	3	4.50

### Faculty of Law

Program Code	Program	Cycle	Nb of Graduated Students	Average Nb of Years
LIC-DRT	Degree in Law	C1	25	4.58
DEA-DRT	Master in Law	C2	13	3.35
MPCI-DRT	Professional Master – Law of international contracts	C2	3	3.00

### Faculty of Engineering

Program Code	Program	Cycle	Nb of Graduated Students	Average Nb of Years
DI-GIT-FI	Computer and Communication Engineering	C1	12	5.92
LIC-ING	Bachelor of Science in Engineering Sciences	C1	79	3.94
MG-BMD	Master in Biomedical Engineering	C2	2	2.00
MG-CHM	Master in Chemical Engineering	C2	3	2.00
MG-ELE	Master in Electrical and Electronic Engineering	C2	1	2.00
MG-MEC	Master in Mechanical Engineering	C2	10	2.10
MG-TEL	Master in Telecom Engineering	C2	3	2.17

## Faculty of Sciences

Program Code	Program	Cycle	Nb of Graduated Students	Average Nb of Years
LIC-BCH-FS	Bachelor of Science in Biochemistry (Fr)	C1	22	3.70
LIC-CHM-FS	Bachelor of Science in Chemistry	C1	4	3.13
LIC-ELE-FS	Bachelor of Science in Electronics	C1	2	4.00
LIC-INFA-FS	Bachelor of Science in Computer Science	C1	11	4.27
LIC-INTA-FS	Bachelor of Science in Information Technology	C1	9	4.50
LIC-MAF-FS	Bachelor of Science in Actuarial and Financial Mathematics	C1	4	3.00
LIC-SVT-FS	Bachelor of Science in Life and Earth Sciences	C1	7	3.79
MS-BCHA-FS	Master of Science in Biochemistry	C2	1	5.00
MS-BCH-FS	Master of Science in Biochemistry (Fr)	C2	23	3.13
MS-CHM-FS	Master of Science in Chemistry	C2	11	2.82
MS-INFA-FS	Master of Science in Computer Science	C2	3	3.50
MS-MAS-FS	Master of Science in Actuarial and Financial Mathematics	C2	4	3.38
MS-MAT-FS	Master of Science in Mathematics	C2	5	3.00
MS-SVT-FS	Master of Science in Life and Earth Sciences	C2	7	2.29
MS-TINA-FS	Master of Science in in Information Technology	C2	1	3.00

## Faculty of Business and Commercial Sciences

Program Code	Program	Cycle	Nb of Graduated Students	Average Nb of Years
LIC-GC	Bachelor in Business Administration (Fr.)	C1	251	3.73
LIC-GCA	Bachelor in Business Administration	C1	77	3.74
LIC-GCA-FIN	Bachelor in Business Administration - Finance	C1	1	3.50
LIC-GESA-FIN	Bachelor in Business Administration - Finance	C1	1	6.00
LIC-GESA-MGM	Bachelor in Business Administration - Management	C1	1	5.50
LIC-GES-AUD	Bachelor of Science in Business and commercial Sciences - Audit	C1	2	5.75
LIC-GES-FIN	Bachelor of Science in Business and commercial Sciences - Finance	C1	1	5.50
LIC-GES-MGMT	Bachelor of Science in Business and commercial Sciences - Management	C1	1	5.50
LIC-GES-MRKT	Bachelor of Science in Business and commercial Sciences - Marketing	C1	1	5.50
LIC-GES-TRL	Bachelor of Science in Business and commercial Sciences - Transport and Logistics	C1	2	6.00
MBA-GC	Master in Business Administration	C2	72	3.48
MBA-GES-FIN	MBA in Finance	C2	3	5.83
MS-GC	Master of Science in Business Administration	C2	6	3.50
DOC-GES-FIN	PhD in Business - Finance	C3	1	3.00
DOC-GES-MGMT	PhD in Business - Management	C3	2	3.50

**Faculty of Letters and Language Center**

Program Code	Program	Cycle	Nb of Graduated Students	Average Nb of Years
LIC-JCM	Bachelor of Arts in Journalism and Communication	C1	23	3.93
LIC-LAA-AC	Bachelor of Arts in Applied Modern Languages - Business and Commerce	C1	2	3.75
LIC-LLA	Bachelor of Arts in English Language and Literature	C1	4	3.25
LIC-LLB	Bachelor of Arts in Arabic Language and Literature	C1	1	3.00
LIC-LLF	Bachelor of Arts in French Language and Literature	C1	3	2.50
LIC-LVA	Bachelor of Arts in Modern Languages and Translation	C1	35	3.23
DEA-LLA	Master of Arts in English Language and Literature	C2	6	3.80
DEA-LLB	Master of Arts in Arabic Language and Literature	C2	7	5.17
DEA-LLF	Master of Arts in French Language and Literature	C2	1	3.50
DIT-ITR-IN	Diploma in Interpretation	C2	2	2.00
DTR-ITR-TR	Diploma in Translation	C2	1	6.50
MA-JCM	Master of Research in Journalism and Communication	C2	3	2.50
MA-LAA-AC	Bachelor of Arts in Applied Modern Languages - Business and Commerce	C2	1	2.50
MA-LLA	Master of Arts in English Language and Literature	C2	3	4.33
MA-LLB	Master of Arts in Arabic Language and Literature	C2	6	2.90
MA-LLF	Master of Arts in French Language and Literature	C2	3	2.33
MA-TRD	Masters in Translation	C2	4	2.50
DOC-ITR	PhD in Language Sciences	C3	3	5.50
DOC-LLA	Ph.D. in English Language and Literature	C3	2	3.75
DOC-LLB	Ph.D. in Arabic Language and Literature	C3	3	4.33

**Faculty of Medicine and Medical Sciences**

Program Code	Program	Cycle	Nb of Graduated Students	Average Nb of Years
LIC-SFS	Bachelor of Sciences in Health Fundamental Sciences	C1	33	3.20
MD-MED	Doctorate of Medicine	C1	28	7.11
MD-DESP	Diploma of Specialized Studies	C3	9	4.67

**Faculty of Music**

Program Code	Program	Cycle	Nb of Graduated Students	Average Nb of Years
LIC-MUS	Bachelor of Arts in Music (Fr)	C1	6	3.90
LIC-MUSA	Bachelor of Arts in Music	C1	1	4.00
MA-MUS	Research Master in Music (Fr)	C2	2	3.75

**Faculty of Philosophy and Humanities**

Program Code	Program	Cycle	Nb of Graduated Students	Average Nb of Years
DE-SED	Teaching Diploma in Education	C1	14	4.54
LIC-PHL	Bachelor of Arts in Philosophy	C1	3	3.67
LIC-PSY	Bachelor of Arts in Psychology	C1	10	3.30
LIC-SED	Bachelor of Arts in Education (Fr)	C1	19	4.18
MA-CUPD	International Master of University Cooperation for Peace and Development	C2	7	1.93
MA-PHL	Master in Philosophy	C2	2	3.75
MA-PSY	Master of Arts in Psychology	C2	8	3.81
MA-SED	Master of Arts in Education	C2	5	3.90
MA-SED-ADME	Master of Arts in Education - Education Administration	C2	13	3.41
MA-SED-EPDF	Master of Arts in Education - Basic Education	C2	5	3.60
MA-SED-TED	Master of Arts in Education - Technology of Education	C2	5	3.10
DOC-PSY	Ph.D. in Psychology	C3	2	5.00
DOC-SCO	Ph.D. in Social Sciences	C3	1	7.00
DOC-SED	Ph.D. in Education	C3	8	4.38

**Faculty of Agricultural and Food Sciences**

Program Code	Program	Cycle	Nb of Graduated Students	Average Nb of Years
DI-SAG	Diploma of Agricultural Engineering	C1	8	6.56
LIC-ING-SA	Bachelor of Science in Engineering Sciences – Food Engineering	C1	3	3.33
LIC-NHD	Bachelor in Human Nutrition and Dietetics (Fr)	C1	46	3.48
LIC-NHDA	Bachelor in Human Nutrition and Dietetics	C1	3	3.00
LIC-SGA	Bachelor of Science in Agri-Food Sciences	C1	3	5.17
MS-NTR-CL	Master in Clinical Nutrition	C2	6	3.25
MS-NTR-GSA	Master of Science in Food Service Management	C2	7	3.93
MS-NTR-NSP	Master in Nutrition and Public Health	C2	8	3.06
MS-SA-SGA	Master of Science in Quality Control of Agri-Food Services	C2	13	3.12

**Faculty of Religious and Oriental Sciences**

Program Code	Program	Cycle	Nb of Graduated Students	Average Nb of Years
LIC-ERP	Bachelor of Arts in Religious and Pastoral Education	C1	3	4.50
DEA-LTRG	Liturgy	C2	1	4.00

**Pontifical Faculty of Theology**

Program Code	Program	Cycle	Nb of Graduated Students	Average Nb of Years
LIC-THE	Bachelor in Theology	C1	24	5.85
LIC-THEB	Bachelor in Theology (Ar)	C1	1	5.00
DEA-THE	Master's Degree in Theology	C2	1	4.50

**Institute of History**

Program Code	Program	Cycle	Nb of Graduated Students	Average Nb of Years
DOC-HIS	Ph.D. in History	C3	1	5.00

**Higher Institute of Nursing Sciences**

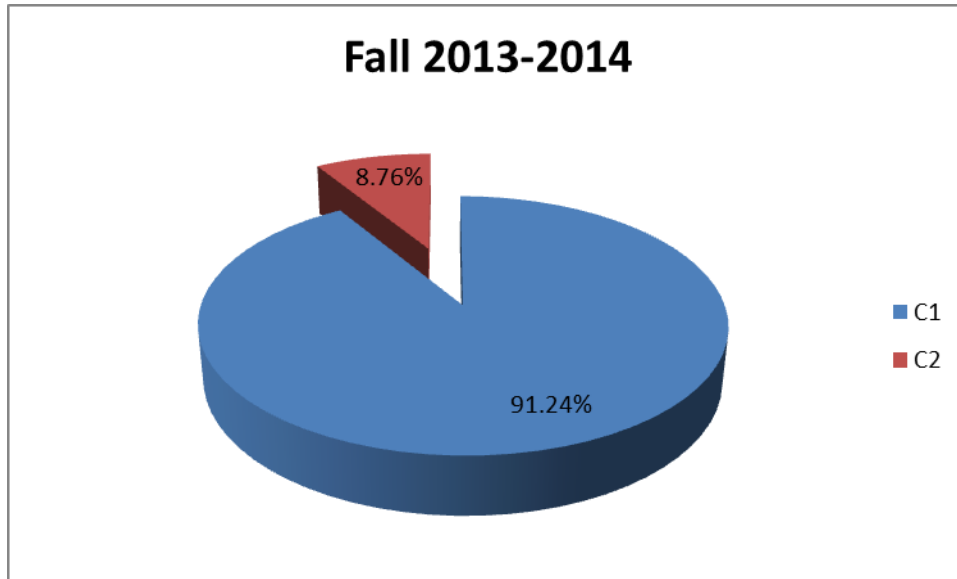
Program Code	Program	Cycle	Nb of Graduated Students	Average Nb of Years
LIC-SIN	Bachelor of Sciences in Nursing Sciences	C1	3	3.33

**Higher Institute of Political and Administrative Sciences**

Program Code	Program	Cycle	Nb of Graduated Students	Average Nb of Years
LIC-RIN	Bachelor in International relations	C1	8	3.50
LIC-SPL	Bachelor in Political Sciences	C1	2	4.00
MA-SPL	Master in Political Sciences	C2	2	3.00

## Probation Rates by Cycle

Cycle	Fall 2013-2014	Fall 2012-2013
<b>C1</b>	552	224
<b>C2</b>	53	56
<b>Total</b>	<b>605</b>	<b>280</b>



## Probation Rates by Academic Unit

Academic Unit	Fall 2013-2014
Faculty of Fine and Applied Arts	148
Faculty of Law	42
Faculty of Engineering	72
Faculty of Sciences	50
Faculty of Business and Commercial Sciences	192
Faculty of Letters	8
Faculty of Medicine and Medical Sciences	2
Faculty of Music	5
Faculty of Philosophy and Humanities	9
Faculty of Agricultural and Food Sciences	56
Faculty of Religious and Oriental Studies	1
Pontifical Faculty of Theology	5
Higher Institute of Nursing Sciences	4
Higher Institute of Political and Administrative Sciences	8
Other	3
<b>Total</b>	<b>605</b>

## Program Change Requests by Academic Unit

### Fall 2013-2014 – Cycle I

Academic Unit	Program Change Requests	Nb. Of C1 Students	Ratio
Faculty of Fine and Applied Arts	50	2466	2.0%
Faculty of Law	5	223	2.2%
Faculty of Engineering	11	652	1.7%
Faculty of Sciences	20	301	6.6%
Faculty of Business and Commercial Sciences	30	1510	2.0%
Faculty of Letters	3	215	1.4%
Faculty of Medicine and Medical Sciences		209	0.0%
Faculty of Music	3	78	3.8%
Faculty of Philosophy and Humanities	4	158	2.5%
Faculty of Agricultural and Food Sciences	26	384	6.8%
Faculty of Religious and Oriental Studies	1	14	7.1%
Pontifical Faculty of Theology	1	171	0.6%
Institute of History		4	0.0%
Higher Institute of Nursing Sciences		23	0.0%
Higher Institute of Political and Administrative Sciences	3	52	5.8%
<b>Total</b>	<b>157</b>	<b>6460</b>	<b>2.4%</b>

### Spring 2013-2014 – Cycle I

Academic Unit	Program Change Requests	Nb. Of C1 Students	Ratio
Faculty of Fine and Applied Arts	33	2257	1.5%
Faculty of Law	4	213	1.9%
Faculty of Engineering	11	593	1.9%
Faculty of Sciences	26	278	9.4%
Faculty of Business and Commercial Sciences	24	1402	1.7%
Faculty of Letters	3	192	1.6%
Faculty of Medicine and Medical Sciences		207	0.0%
Faculty of Music		78	0.0%
Faculty of Philosophy and Humanities	9	167	5.4%
Faculty of Agricultural and Food Sciences	5	352	1.4%
Faculty of Religious and Oriental Studies		12	0.0%
Pontifical Faculty of Theology	4	175	2.3%
Institute of History		4	0.0%
Higher Institute of Nursing Sciences		23	0.0%
Higher Institute of Political and Administrative Sciences		54	0.0%
<b>Total</b>	<b>119</b>	<b>6007</b>	<b>2.0%</b>



## Program Change Requests by Program – Fall 2013-2014

### Faculty of Fine and Applied Arts

Program Code	Program Name	Program Change Requests	Total Nb of Students	Ratio
DES-AGR	Master in Graphic Design	1	45	2.2%
DES-ARC	Master in Architecture	27	1346	2.0%
DES-PUB	Master in Advertising	1	18	5.6%
LIC-AVS	Bachelor of Arts in Visual and Performing Arts	2	279	0.7%
LIC-AGR	Bachelor in Graphic Design	3	109	2.8%
LIC-DAA	Bachelor in Design and Applied Arts	13	512	2.5%
LIC-PUB	Bachelor of Arts in Advertising	3	48	6.3%

### Faculty of Law

Program Code	Program Name	Program Change Requests	Total Nb of Students	Ratio
LIC-DRT	Degree in Law	5	198	2.5%

### Faculty of Engineering

Program Code	Program Name	Program Change Requests	Total Nb of Students	Ratio
LIC-ING	Bachelor of Sciences in Engineering Sciences	11	637	1.7%

### Faculty of Sciences

Program Code	Program Name	Program Change Requests	Total Nb of Students	Ratio
LIC-BCH-FS	Bachelor of Science in Biochemistry (Fr)	4	99	4.0%
LIC-CHM-FS	Bachelor of Science in Chemistry	1	12	8.3%
LIC-INFA-FS	Bachelor of Science in Computer Science	7	79	8.9%
LIC-INTA-FS	Bachelor of Science in Information Technology	4	37	10.8%
LIC-MAF-FS	Bachelor of Science in Actuarial and Financial Mathematics	1	15	6.7%
LIC-MAT-FS	Bachelor of Science in Mathematics	1	3	33.3%
LIC-SVT-FS	Bachelor of Science in Life and Earth Sciences	2	32	6.3%

**Faculty of Business and Commercial Sciences**

Program Code	Program Name	Program Change Requests	Total Nb of Students	Ratio
LIC-GC	Bachelor in Business Administration (Fr.)	25	1106	2.3%
LIC-GCA	Bachelor in Business Administration	5	387	1.3%

**Faculty of Letters and Language Center**

Program Code	Program Name	Program Change Requests	Total Nb of Students	Ratio
LIC-JCM	Bachelor of Arts in Journalism and Communication	1	68	1.5%
LIC-LLF	Bachelor of Arts in French Language and Literature	1	17	5.9%
LIC-LVA	Bachelor of Arts in Modern Languages and Translation	1	110	0.9%

**Faculty of Music**

Program Code	Program Name	Program Change Requests	Total Nb of Students	Ratio
LIC-MUS	Bachelor of Arts in Music (Fr)	2	52	3.8%
LIC-EMS	Bachelor of Arts in Higher and Specialized Music Education (Fr)	1	1	100.0%

**Faculty of Philosophy and Humanities**

Program Code	Program Name	Program Change Requests	Total Nb of Students	Ratio
LIC-PSY	Bachelor of Arts in Psychology	4	69	5.8%

**Faculty of Agricultural and Food Sciences**

Program Code	Program Name	Program Change Requests	Total Nb of Students	Ratio
DI-SAG	Diploma of Agricultural Engineering	1	141	0.7%
LIC-NHD	Bachelor in Human Nutrition and Dietetics (Fr)	2	175	1.1%
LIC-NHDA	Bachelor in Human Nutrition and Dietetics	1	25	4.0%
LIC-SGA	Bachelor of Science in Agri-Food Sciences	21	31	67.7%
LIC-ING-SA	Bachelor of Science in Engineering Sciences – Food Engineering	1	12	8.3%

**Faculty of Religious and Oriental Studies**

Program Code	Program Name	Program Change Requests	Total Nb of Students	Ratio
LIC-ERP	Bachelor of Arts in Religious and Pastoral Education	1	6	16.7%

**Pontifical Faculty of Theology**

Program Code	Program Name	Program Change Requests	Total Nb of Students	Ratio
LIC-EPA	Bachelor in Religious and pastoral education	1	1	100.0%

**Higher Institute of Political and Administrative Sciences**

Program Code	Program Name	Program Change Requests	Total Nb of Students	Ratio
LIC-RIN	Bachelor in International relations	2	40	5.0%
LIC-SPL	Bachelor in Political Sciences	1	12	8.3%

## Program Change Requests by Program – Spring 2013-2014

### Faculty of Fine and Applied Arts

Program Code	Program Name	Program Change Requests	Total Nb of Students	Ratio
DES-ARC	Master in Architecture	17	1266	1.3%
DES-PUB	Master in Advertising	1	13	7.7%
LIC-AGR	Bachelor in Graphic Design	1	105	1.0%
LIC-DAA	Bachelor in Design and Applied Arts	14	460	3.0%

### Faculty of Law

Program Code	Program Name	Program Change Requests	Total Nb of Students	Ratio
LIC-DRT	Degree in Law	3	189	1.6%
LIC-DRTA	Law (English section)	1	24	4.2%

### Faculty of Engineering

Program Code	Program Name	Program Change Requests	Total Nb of Students	Ratio
LIC-ING	Bachelor of Science in Engineering Sciences	11	587	1.9%

### Faculty of Sciences

Program Code	Program Name	Program Change Requests	Total Nb of Students	Ratio
LIC-BCHA-FS	Bachelor of Science in Biochemistry	2	6	33.3%
LIC-BCH-FS	Bachelor of Science in Biochemistry (Fr)	11	86	12.8%
LIC-INF-FS	Bachelor of Science in Computer Science	5	52	9.6%
LIC-INTA-FS	Bachelor of Science in Information Technology	1	9	11.1%
LIC-MAF-FS	Bachelor of Science in Actuarial and Financial Mathematics	2	36	5.6%
LIC-MAT-FS	Bachelor of Science in Mathematics	2	2	100.0%
LIC-SVT-FS	Bachelor of Science in Life and Earth Sciences	3	30	10.0%

**Faculty of Business and Commercial Sciences**

Program Code	Program Name	Program Change Requests	Total Nb of Students	Ratio
LIC-GC	Bachelor in Business Administration (Fr.)	22	1018	2.2%
LIC-GCA	Bachelor in Business Administration	2	377	0.5%

**Faculty of Letters and Language Center**

Program Code	Program Name	Program Change Requests	Total Nb of Students	Ratio
LIC-LLA	Bachelor of Arts in English Language and Literature	1	17	5.9%
LIC-LVA	Bachelor of Arts in Modern Languages and Translation	2	102	2.0%

**Faculty of Philosophy and Humanities**

Program Code	Program Name	Program Change Requests	Total Nb of Students	Ratio
LIC-PSY	Bachelor of Arts in Psychology	1	64	1.6%
LIC-SED	Bachelor of Arts in Education (Fr)	8	72	11.1%

**Faculty of Agricultural and Food Sciences**

Program Code	Program Name	Program Change Requests	Total Nb of Students	Ratio
DI-SAG	Diploma of Agricultural Engineering	2	137	1.5%
LIC-NHD	Bachelor in Human Nutrition and Dietetics (Fr)	2	150	1.3%
LIC-NHDA	Bachelor in Human Nutrition and Dietetics	1	25	4.0%

**Pontifical Faculty of Theology**

Program Code	Program Name	Program Change Requests	Total Nb of Students	Ratio
LIC-THE	Bachelor in Theology	4	133	3.0%

# Course Management

## Variation of number of sections and average of Registered Students

This study aims to study the undergraduate class size distribution that includes all the courses “C” given in the main Campus Kaslik.

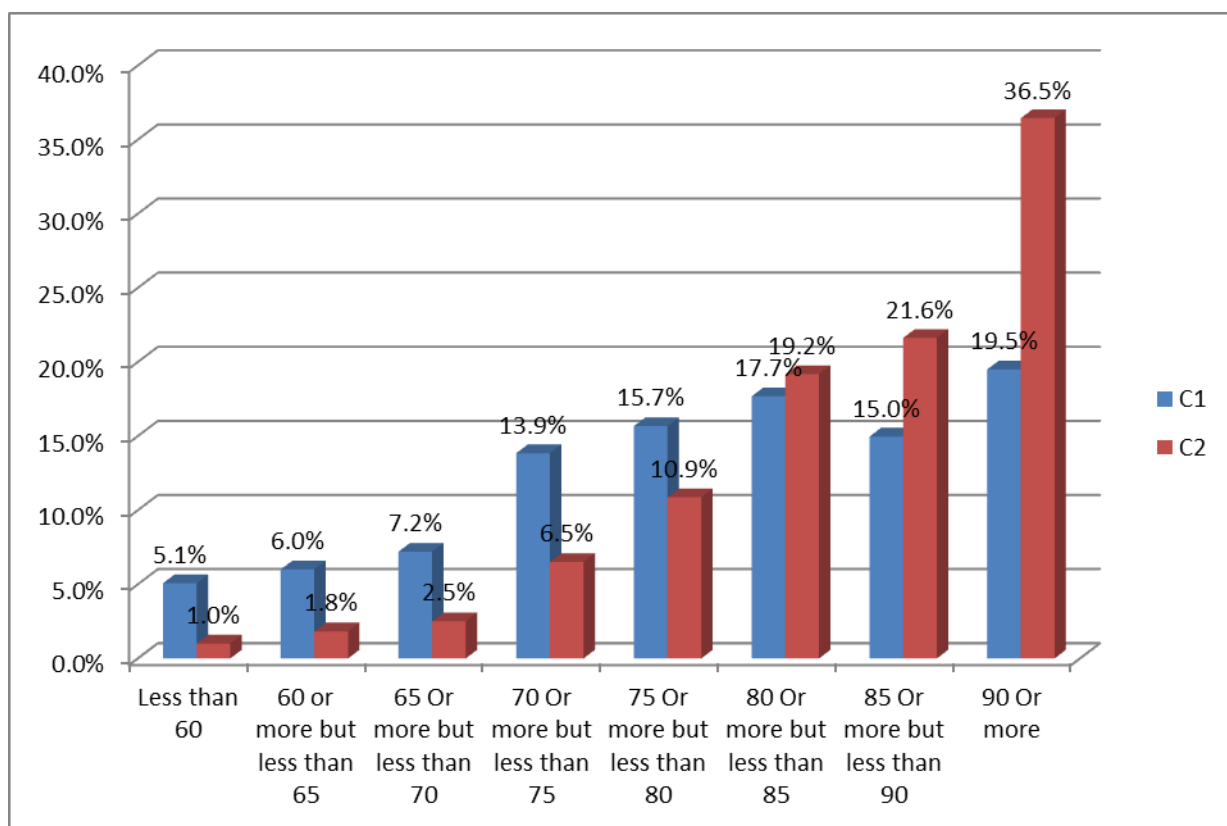
Unit	201410			201420		
	Nb of sections	Total of Registered Students	Average	Nb of sections	Total of Registered Students	Average
BA	179	4026	22.5	184	3713	20.2
DR	43	944	22.0	41	881	21.5
FI	64	1024	16.0	62	1167	18.8
FS	118	2551	21.6	109	1989	18.2
GC	156	3618	23.2	135	3427	25.4
HI	33	664	20.1	28	545	19.5
LT	213	3545	16.6	198	3034	15.3
MD	26	767	29.5	25	749	30.0
MU	18	344	19.1	24	339	14.1
PH	48	817	17.0	41	714	17.4
SA	68	1085	16.0	60	975	16.3
SI	7	71	10.1	12	107	8.9
SP	18	227	12.6	14	203	14.5
SR	21	452	21.5	24	497	20.7
TH	14	232	16.6	38	650	17.1
<b>Total</b>	<b>1026</b>	<b>20367</b>	<b>19.9</b>	<b>995</b>	<b>18990</b>	<b>19.1</b>

## Hourly Classroom Population – Fall 2013-2014

	Campus Kaslik						RUC Chekka					
	MON	TUE	WED	THU	FRI	SAT	MON	TUE	WED	THU	FRI	SAT
8 a.m.	1696	1295	752	1387	1758	0	47	64	0	64	47	0
9 a.m.	1810	1403	911	1474	1844	0	73	72	8	64	86	0
10 a.m.	2193	2219	1119	2239	2285	0	125	82	25	74	139	0
11 a.m.	2515	2639	1357	2639	2471	0	130	116	52	96	119	0
12 Noon	2418	2616	1190	2640	2417	0	100	130	56	96	93	0
1 p.m.	1919	1639	836	1588	1797	0	130	99	36	65	118	0
2 p.m.	1938	1974	677	1993	1918	0	81	132	36	81	88	0
3 p.m.	1818	1833	822	1841	1855	0	81	137	36	90	88	0
4 p.m.	1967	1930	836	1949	1792	0	95	101	25	68	86	0
5 p.m.	1724	1842	844	1803	1652	0	43	65	25	31	49	0
6 p.m.	1637	1780	740	1852	1586	0	28	25	7	10	49	0
7 p.m.	596	901	600	851	697	0	0	0	0	0	0	0
8 p.m.	148	216	328	148	79	0	0	0	0	0	0	0
9 p.m.	64	31	76	39	56	0	0	0	0	0	0	0
	RUC Rmeich						RUC Zahle					
	MON	TUE	WED	THU	FRI	SAT	MON	TUE	WED	THU	FRI	SAT
8 a.m.	33	0	39	8	57	33	392	66	82	54	95	0
9 a.m.	33	0	39	8	57	33	417	66	82	54	102	0
10 a.m.	33	0	39	8	57	18	890	191	144	226	164	23
11 a.m.	18	0	43	6	48	25	951	217	94	197	206	23
12 Noon	18	0	43	6	48	25	852	216	88	180	179	23
1 p.m.	13	0	44	6	49	25	904	169	107	187	211	23
2 p.m.	6	0	2	0	47	36	974	210	150	225	184	23
3 p.m.	25	4	6	19	47	36	921	228	108	243	155	23
4 p.m.	25	19	37	40	24	25	1637	229	60	180	138	0
5 p.m.	19	19	37	40	27	0	373	103	20	62	77	0
6 p.m.	0	0	28	21	27	0	267	58	20	37	71	0
7 p.m.	0	0	0	0	3	0	0	0	0	0	0	0
8 p.m.	0	0	0	0	0	0	0	0	0	0	0	0
9 p.m.	0	0	0	0	0	0	0	0	0	0	0	0

## Grades Distribution

Term average distribution	201410			201420		
	C1	C2	C3	C1	C2	C3
Less than 60	5.1%	1.0%	1.2%	4.3%	1.4%	0.0%
60 or more but less than 65	6.0%	1.8%	0.8%	5.3%	1.5%	0.0%
65 Or more but less than 70	7.2%	2.5%	2.4%	6.4%	2.1%	0.0%
70 Or more but less than 75	13.9%	6.5%	4.4%	12.8%	6.0%	3.4%
75 Or more but less than 80	15.7%	10.9%	4.4%	15.4%	10.5%	2.0%
80 Or more but less than 85	17.7%	19.2%	6.3%	17.3%	18.0%	18.9%
85 Or more but less than 90	15.0%	21.6%	22.6%	16.0%	24.5%	22.3%
90 Or more	19.5%	36.5%	57.9%	22.6%	35.9%	53.4%



Grades distribution - Fall 2013-2014



## Changed Grades by Faculty/Institute

Unit	Branch Administration	Data entry error	Degraded Late	Faculty Error	In Progress	Incomplete	Re-Calculated	Substitute Grade	System Error	Grand Total
BA	6	64	7	1		9	34			121
DR	4	7	11				1	1		24
EL	1					2		119		122
EM			1		1		3			5
ET						5				5
FI	4	12	41		5	1	9			72
FS	2	44	32			12	67		1	158
GC	14	48	56	3	5	9	28			163
HI		1								1
LT	2	15	20			3	14			54
MD	5	71	92			1	11			180
MU		10	3			1	8			22
PH	1	23	31			1	2			58
PU		2					1			3
SA		3	26			5	8			42
SP		15	4				5			24
SR		1	1				2			4
TH			2			1	3			6
<b>Total</b>	<b>39</b>	<b>316</b>	<b>327</b>	<b>4</b>	<b>11</b>	<b>50</b>	<b>196</b>	<b>120</b>	<b>1</b>	<b>1064</b>
	<b>3.7%</b>	<b>29.7%</b>	<b>30.7%</b>	<b>0.4%</b>	<b>1.0%</b>	<b>185.2%</b>	<b>18.4%</b>	<b>11.3%</b>	<b>0.1%</b>	

# Faculty and Staff

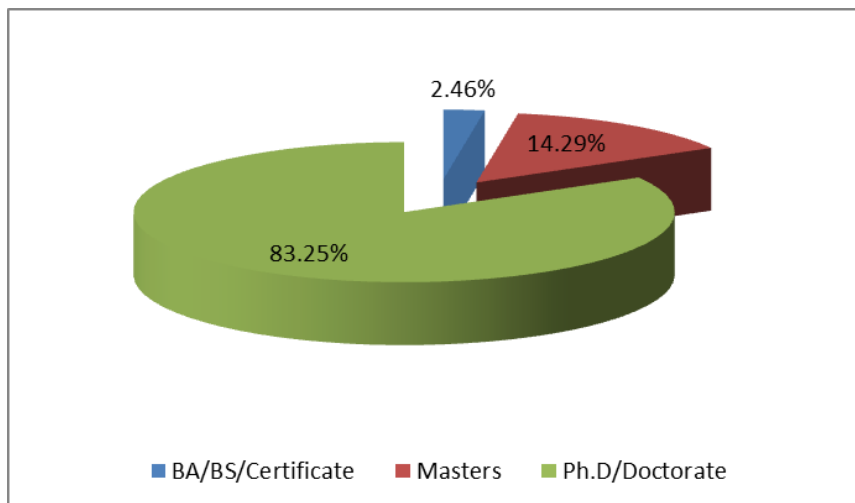
## Faculty members by type

903 Faculty Members out of which:

- 203 Full-time Faculty
- 700 Part-time Faculty

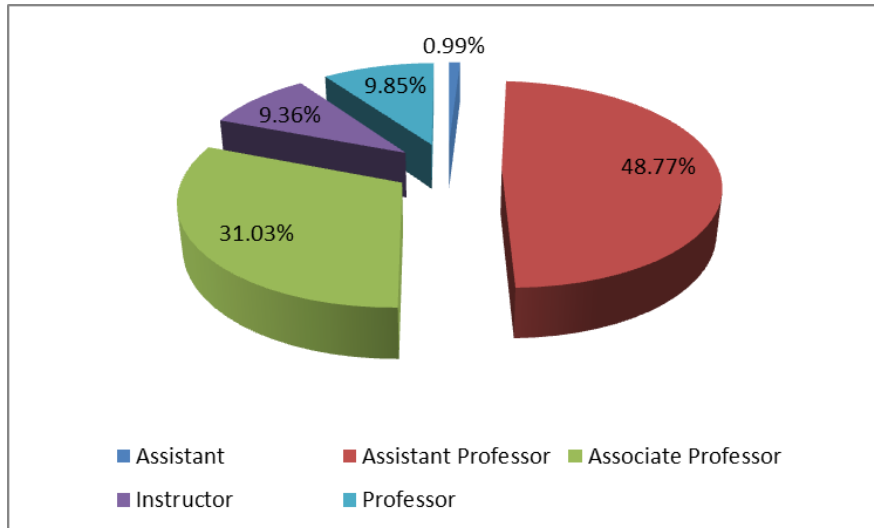
## Distribution of Full-time Faculty Members by Degree

Degree	Nb. of Faculty Members
BA/BS/Certificate	5
Masters	29
Ph.D/Doctorate	169
<b>Total</b>	<b>203</b>



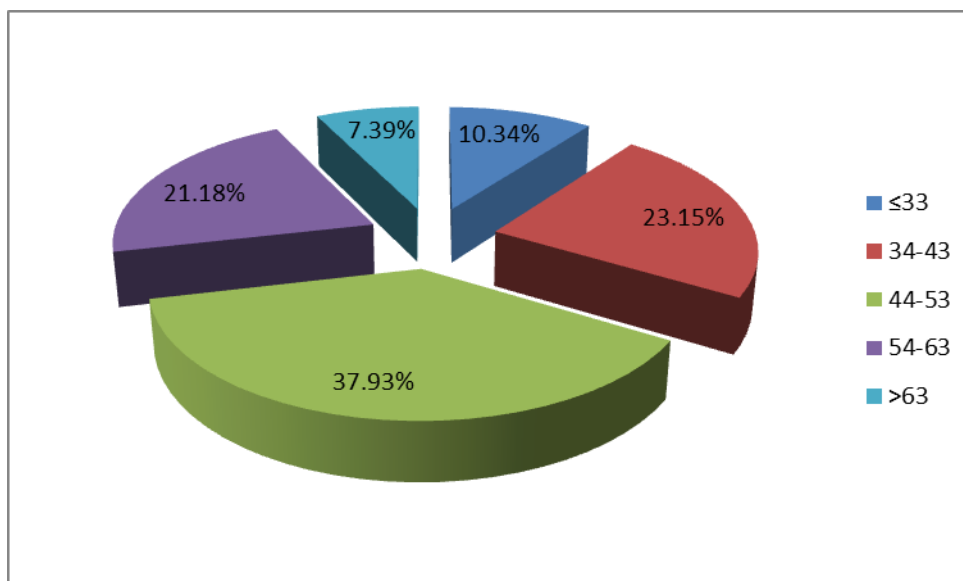
### Distribution of Full-time Faculty Members by Degree

Rank	Nb. of Faculty Members
Assistant	2
Instructor	19
Assistant Professor	99
Associate Professor	63
Professor	20
<b>Total</b>	<b>203</b>

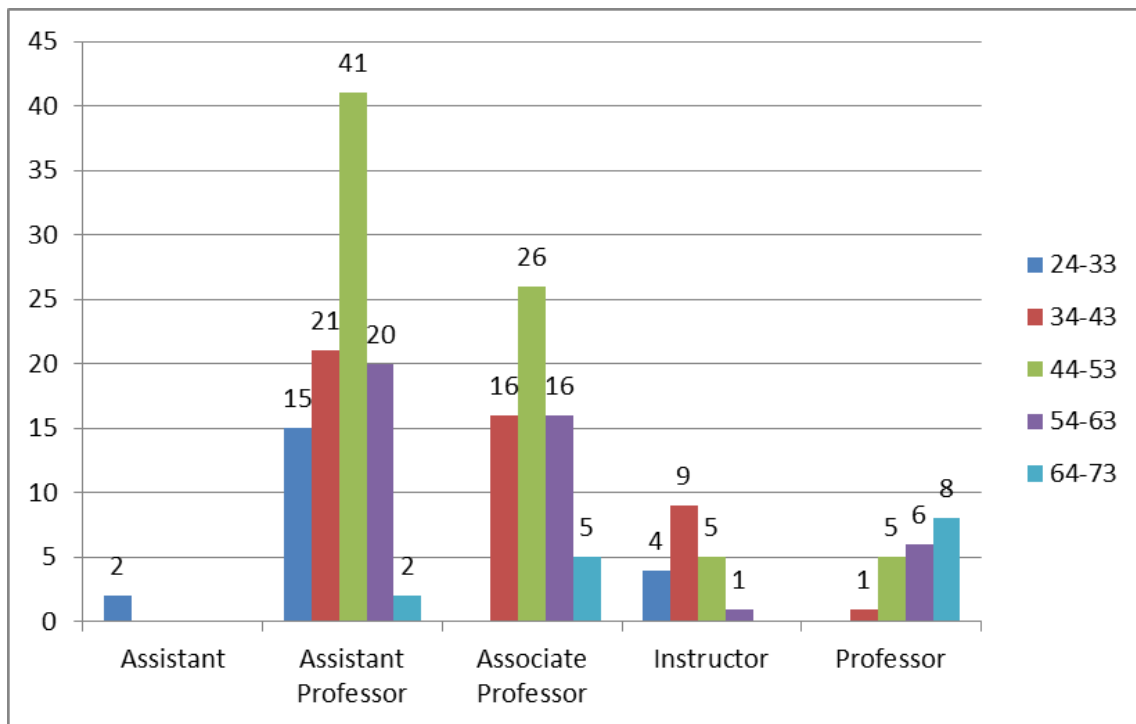


### Full-time Faculty Members Age Distribution

≤33	34-43	44-53	54-63	>63	Total
21	47	77	43	15	<b>203</b>

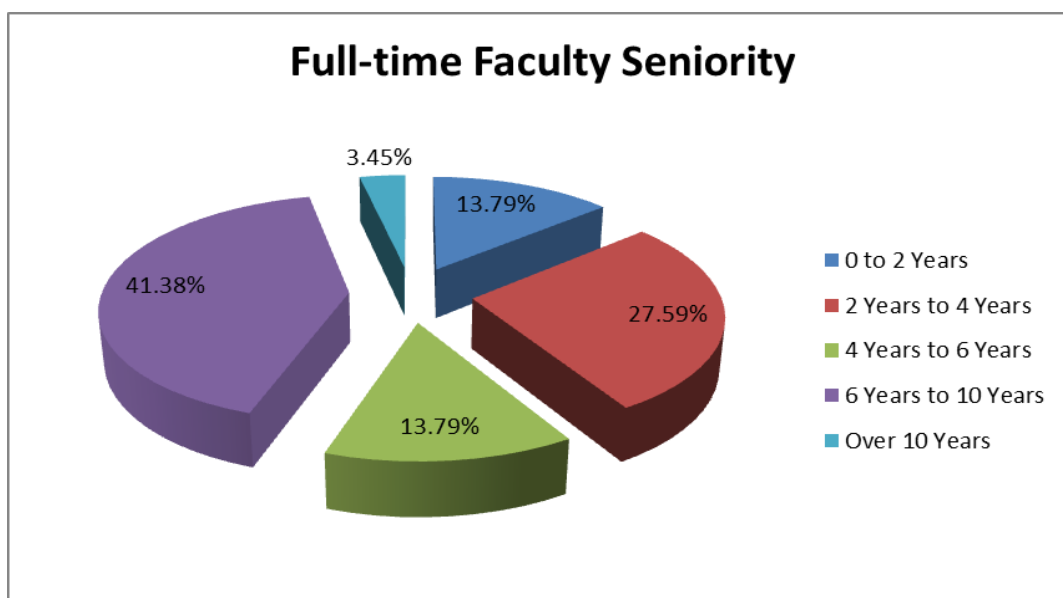


### Full-time Faculty Members Age Distribution by Rank



### Full-time Faculty Members Seniority at USEK

Faculty Members Seniority	Date	2013-2014	
		Number	Percentage %
0 to 2 Years	June 2012 - May 2014	28	13.8%
2 Years to 4 Years	June 2010 - May 2012	56	27.6%
4 Years to 6 Years	June 2008 - May 2010	28	13.8%
6 Years to 10 Years	June 2004 - May 2008	84	41.4%
Over 10 Years	< May 2004	7	3.4%
<b>Total</b>		<b>203</b>	<b>100%</b>



## Faculty Applications and Recruitment

During 2013, USEK considered 409 applications for teaching.

Requests for recruitment and decisions of Ad hoc commission are as following:

	Fall 2013-2014	Spring 2013-2014
Requests for recruitment	105	78
Favorable Decision	82	61
Not Favorable Decision	13	12
Applicant not reachable	10	5

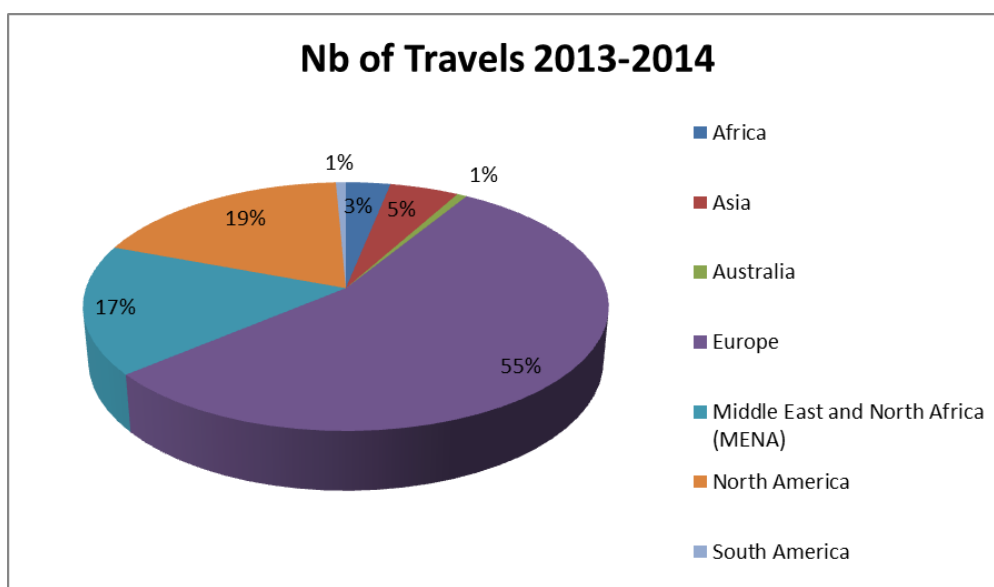
## Staff Mobility

### Number of travel requests by type

	2013-2014
Employees	63
Faculty	222
<b>Total</b>	<b>285</b>

### Number of travel requests by Country

Region	2013-2014
Europe	157
North America	53
Middle East and North Africa (MENA)	48
Asia	14
Africa	9
Australia	2
South America	2
<b>Total</b>	<b>285</b>



# USEK Cares

## Financial Aid

25% of the total number of registered students at USEK benefit from financial aid

Various categories of students who can benefit from a reduction:

Category	Reduction %
Students who are members of the same family, simultaneously registered at the University	2 brothers/ sisters: 10% 3 brothers/ sisters: 20% 4 or more: 30%
Brother, sister, nephew or niece of a member of the Lebanese Maronite Order	50%
Employee at Usek / Son or daughter of employee	75%
Teacher at USEK / Son or daughter of teacher	Full-time: 75% Part-time: 40%
Son or daughter of an employee or full-time teacher registered in the School of Music	15%
Student Jobs	5h: 265\$ 10h: 525\$ 15h: 790\$
Students who are members of a sports team at USEK	15%
Students who present a social aid request	Calculated according to the family situation

## Continuous Teaching & Learning Improvement

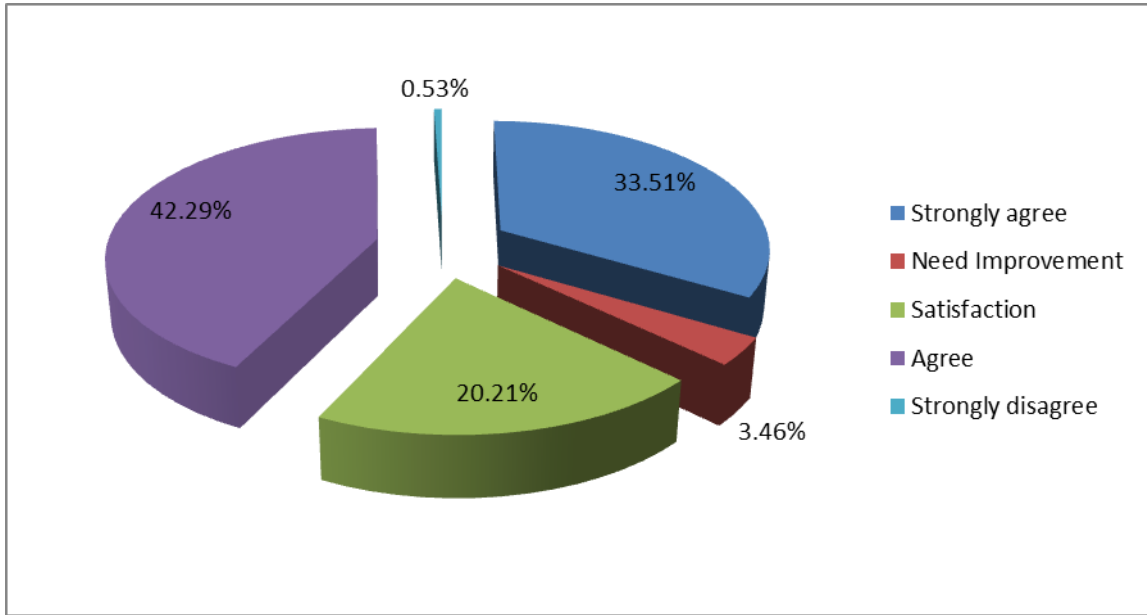
### Course Feedback Survey Results

Semester	General Evaluation of the Course	Organization of teaching	Educational skills	Learning evaluation
<b>Spring 2008-2009</b>	3.53	3.68	3.61	3.51
<b>Fall 2009-2010</b>	3.5	3.64	3.57	3.48
<b>Spring 2009-2010</b>	3.49	3.63	3.55	3.46
<b>Fall 2010-2011</b>	3.46	3.61	3.52	3.44
<b>Spring 2010-2011</b>	3.52	3.64	3.57	3.49
<b>Fall 2011-2012</b>	3.48	3.64	3.56	3.49
<b>Spring 2011-2012</b>	3.58	3.65	3.66	3.59
<b>Fall 2012-2013</b>	3.65	3.69	3.71	3.68
<b>Spring 2012-2013</b>	3.67	3.71	3.72	3.70
<b>Fall 2013-2014</b>	3.57	3.64	3.64	3.59
<b>Spring 2013-2014</b>	3.68	3.73	3.73	3.69
<b>Average</b>	<b>3.56</b>	<b>3.66</b>	<b>3.62</b>	<b>3.56</b>

\*\*The participation in the Course Feedback Survey was 25% in Fall 2011-2012 and it reached 90% after using Blue

### Course Self-Assessment by Faculty – Fall 2013-2014

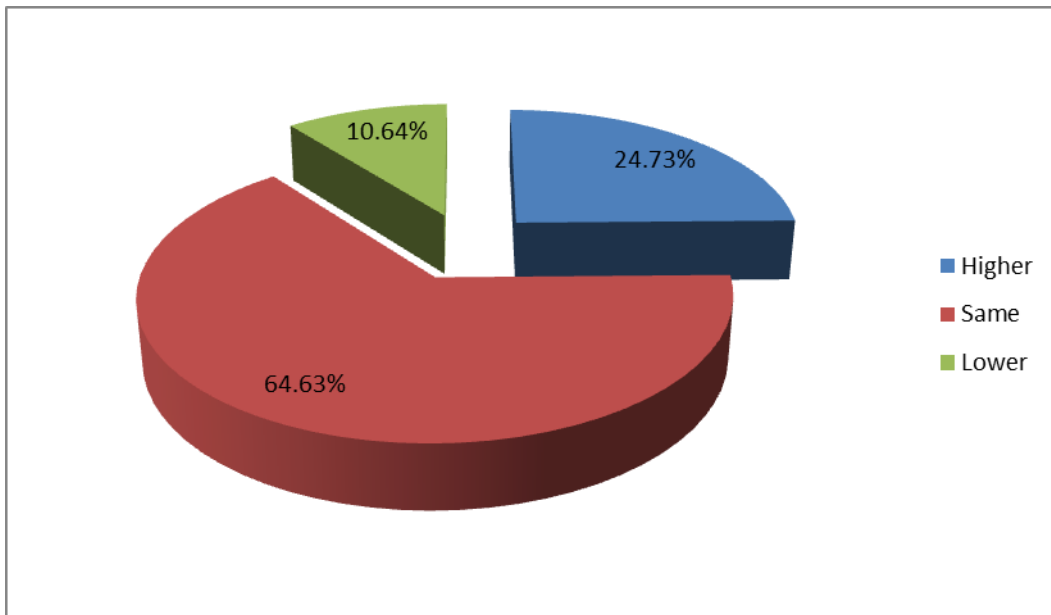
- Did the students demonstrate achievement of the desired educational outcomes that you, as instructor, hoped to cover?



- Students have fully acquired the learning outcomes as reflected in the assessment

Average of answers 3.23/4

- How do you compare the overall students' performance relatively with previous terms?



## Peer Review of Teaching - PRT – Fall 2013-2014

Instructional Competence	
1. The instructor presented lesson with clearly stated objectives.	4.66
2. The instructor demonstrated through knowledge of subject matter.	4.71
3. The Course delivery consisted of techniques and strategies cognizant of student’s learning styles and abilities (Used a variety of relevant illustrations / examples).	4.38
4. The instructor recognized diversity among students and demonstrated ability to communicate with them.	4.36
5. The instructor treated students with respect.	4.66
6. The instructor showed responsiveness to students' needs and requests for assistance.	4.58
7.The instructor regularly checked for understanding and/or used informal assessments	4.38
8. The instructor demonstrated planning and preparation.	4.57
9. The instructor has the knowledge to use textbook and teaching materials (Technology, tapes, handouts, transparencies, etc.)	4.4
10. The instructor Spoke the course language, clearly, audibly and confidently	4.4
11. The instructor encouraged the students to speak the course language	4.22
12. The Students displayed high level of interest and actively participated.	4.36
13. The Classroom environment was conducive to learning.	4.52
<b>Average</b>	<b>4.48</b>
Course Materials Evaluation	
1. Course content includes the appropriate topics indicated in the syllabus.	4.74
2. Course content reflects the current state of the field.	4.62
3. Lecture notes are well organized and clearly written.	4.54
4. Deliverables submitted are of high quality and accurate.	4.38
5. Assignments are consistent with objectives and appropriately challenging.	4.49
6. Tests are consistent with learning objectives and appropriately challenging.	4.48
7. Tests are clearly written and reasonable in length.	4.31
8. Students assessment technics (reports, tests, assignments exams, etc.)	4.36
9. Grades percentages distributions on tests, assignments and assiduity	4.51
10. Student grades and products demonstrate satisfaction of learning outcomes.	4.31
<b>Average</b>	<b>4.47</b>



## Welfare of people on campus

### Students Participation – by Campus

Campus	201310	201320	201410	201420
Main Campus	3125	2166	3577	3110
RUC - Zahleh	243	172	306	219
RUC - Chekka	243	179	203	160
RUC - Rmeich	112	105	97	80
<b>Total</b>	<b>3723</b>	<b>2622</b>	<b>4183</b>	<b>3569</b>

### Main factors for choosing USEK

#### 10 Most important factors by importance degree

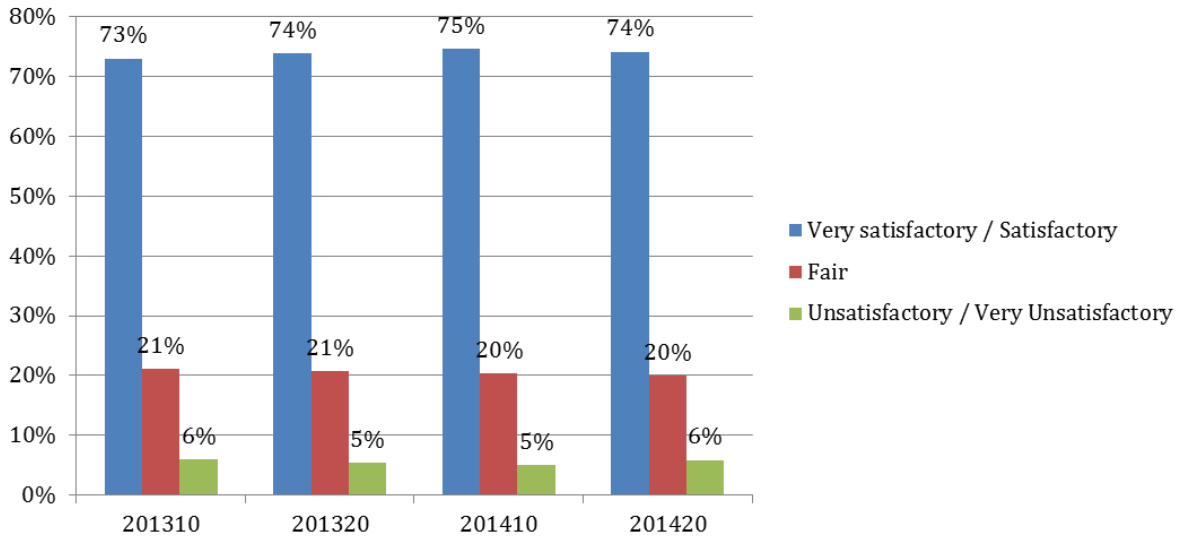
Average for all responses in the academic year 2013-2014

	CK	KA	RM	ZH	All Campuses
Diplomas recognized by the State	4.43	4.38	4.69	4.42	4.40
Good reputation in the quality of education	4.40	4.33	4.71	4.38	4.34
Wide choice of educational system	4.40	4.32	4.68	4.38	4.34
Trilingual university	4.32	4.31	4.74	4.42	4.33
Respect of diversity	4.36	4.31	4.69	4.43	4.33
Programs adapted to the needs of	4.36	4.30	4.64	4.35	4.32
Modern & contemporary university	4.27	4.28	4.68	4.36	4.29
Easy access (Location of the campus)	4.37	4.26	4.62	4.35	4.28
International dimension	4.26	4.25	4.68	4.28	4.26
Freedom of opinion and expression	4.33	4.21	4.71	4.36	4.24

- Diplomas recognized by the state have stayed the top factor for choosing USEK since 2008
- Good reputation in the quality of education passed from rank 7 in 2008 to rank 2 in 2014

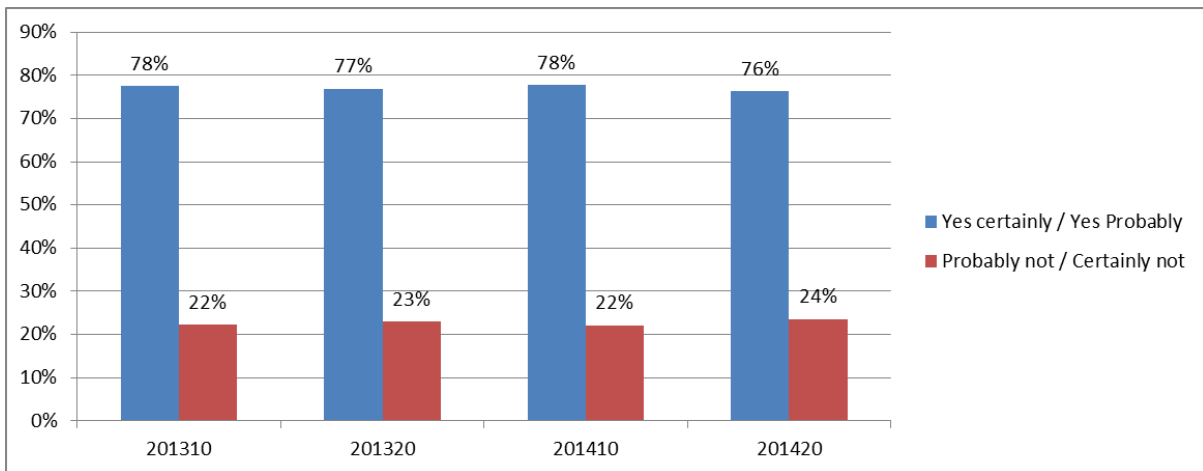
### General Impression on the services at USEK

	201310	201320	201410	201420
Very satisfactory	27%	29%	28%	29%
Satisfactory	46%	45%	47%	45%
Fair	21%	21%	20%	20%
Unsatisfactory	4%	4%	4%	4%
Very Unsatisfactory	2%	1%	1%	1%



### Opinion concerning the taking into consideration of the answers

	201310	201320	201410	201420
Yes certainly	34%	37%	35%	36%
Yes probably	43%	40%	43%	40%
Probably not	17%	17%	17%	17%
Certainly not	5%	6%	5%	7%





# Corporate Image

## Website

### Some Statistics on the USEK website:

- Average number of visitors by month in 2014:
- The most visited pages in 2014:
- Evolution of number of pages
  - In 2004: 2000 pages
  - In 2009: 12000 pages
  - In 2013: 16000 pages
  - In 2014: 17000 pages (USEK website only without the sub webs)

### USEK website usek.edu.lb in numbers:

- Number of visits: 40000
- Unique visitors: 15900
- Page views: 105000

### The Mobile version of USEK website in numbers:

- Number of visits: 15800
- Bounce Rate: 60%
- Operating system: Android

## Social Media

Facebook	Twitter	Linked In	Youtube	Instagram
Number of Fans: 34,695	Number of Followers: 4,197	Number of Followers: 2,777	Number of Views: 38,694	Number of followers: 2,515
Average daily interaction: <i>114 likes and comments per day</i>	Number of Tweets: 3,285	Top location: Lebanon	Number of subscriptions: 238 Number of videos uploaded: 64	Number of photos uploaded: 219
Demographics: <i>44% women 55% man 20% between ages of 18 &amp; 24</i>	Number of Retweets/Mentions: 373	Top Industry: Art & Design	Top Location: Lebanon	Total of like received: 15,134
Lebanon: 68% Abroad: <b>32%</b>	Total Reach: 39.0K			

## E-learning

**Student Activities:** average of 51379 activities per week (between September and November 2014)

**Instructors Activities:** average of 8675 activities per week (between September and November 2014)

**Question Bank:** total of 4395 questions for all courses

## E-portfolio

**Site launched:** 19 September 2014

**Active users:** 1140 until end of November, 100 since 25 November

**Pages:** 2322; users who make pages have about 2 pages each

**Views:** 2612 views for users profile