

LSEG Datastream Navigator

Quick Reference Card

V4.7

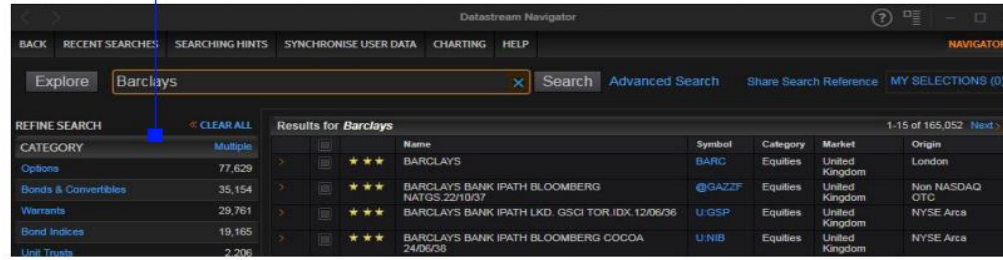


LSEG



Free text search

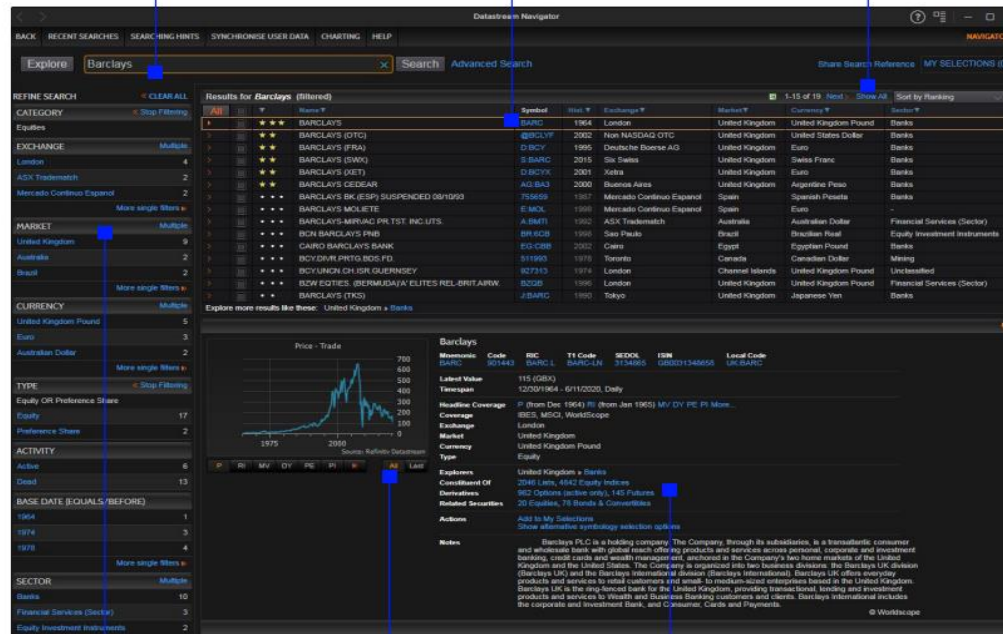
Narrow down your search by filtering to show only one data Category. For example, Equities



Use **x** to clear text or **Clear All** to clear all the filters

Series the search engine has ranked highest are displayed at the top

Show All displays all series, if there are less than 1,000 results



Narrow down your search by filtering on the Exchange, Market, Currency and so on

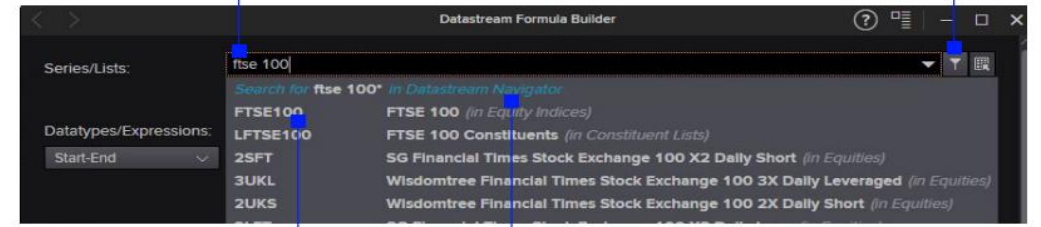
Preview pane shows chart and metadata for the series

See indices the equity is a constituent of

Series suggest

Type in the name of the series you are looking for

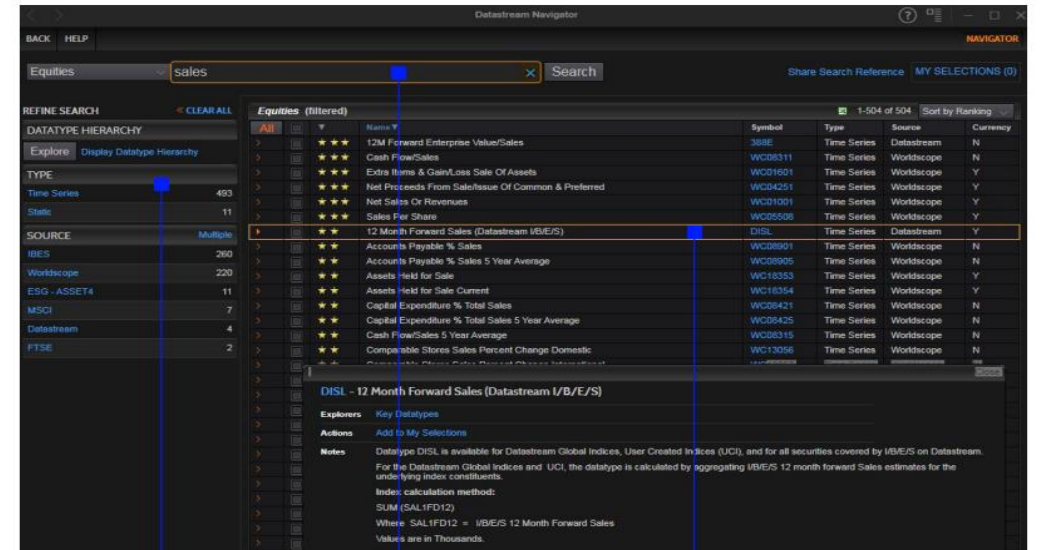
Click on the filter to display the full Navigator interface



Click on **FTSE 100** to select the code

Search for series with "ftse 100" in the Navigator interface

Datatype search



Click on the Hierarchy or the filters to narrow down the results

Enter text, results are ordered by the search engine

Click on the Datatype to see the definition

Explorer page



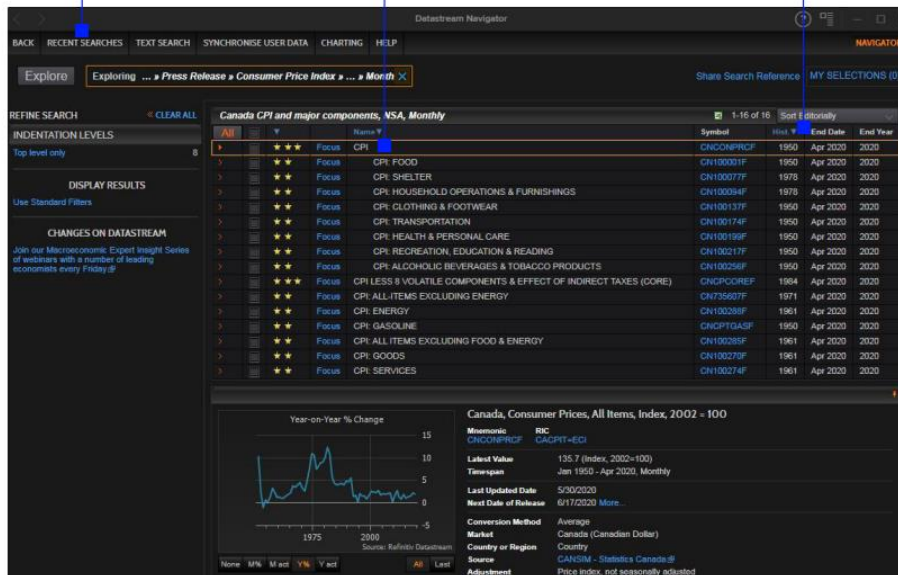
Click the **Explore** link to open Explorer option or use **shift + E** on the keyboard. Use the **Up/Down** and **Right/Left** keys

Results page

See previously reviewed explorers and searches

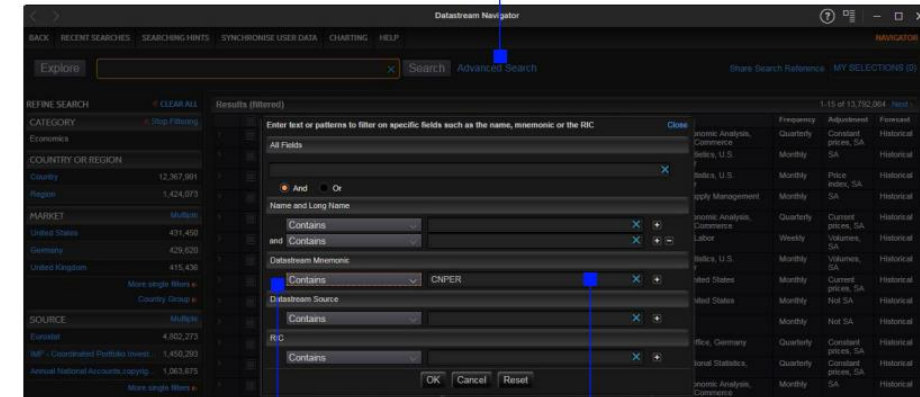
Click to display the preview pane

Reorder by start date, and so on



Advance search page

Select the **Advance Search** link



Select field (mnemonic) and the type of search. For example, Contains, Starts With, and so on

Enter the text to search for. Special characters such as \$ and £ are only supported in the mnemonic and RIC fields

Results page

Search text can be edited directly. For example, change to **CNPER.A**

Or click on **Advanced Search** again to make further changes or use other fields

